

**SITE LOCATION MAP**

Source: NEARMAP

GRAPHIC SCALE IN FEET  
0 100 200 400

COOPER AVE  
ORIENTA AVE  
SYLVAN LN  
PROPERTY LINE  
PROJECT SITE

SHEET NUMBER	SHEET TITLE
C-0.0	COVER SHEET
C-3.0	GRADING AND EROSION & SEDIMENT CONTROL PLAN
C-3.1	SITE ACCESS ROUTE PLAN
C-3.2	STOCKPILE PROFILES
C-3.3	PHOTOS OF PROPOSED STOCKPILE AREA
C-3.4	GRADING AND EROSION & SEDIMENT CONTROL DETAILS

[illegible]

**Kimley»Horn**  
New York

© 2023 KIMLEY-HORN ENGINEERING AND  
LANDSCAPE ARCHITECTURE OF NEW YORK, P.C.  
1 NORTH LEXINGTON AVENUE, SUITE 505  
WHITE PLAINS, NY 10601  
PHONE: 914-368-9200  
WWW.KIMLEY-HORN.COM



KHA PROJECT	AS SHOWN
112056005	TSW
DATE	PEP
03/28/2023	KVH
SCALE:	CHECKED BY:
DESIGNED BY:	
DRAWN BY:	
CHECKED BY:	

HAMPSHIRE  
COUNTRY CLUB  
1025 COVE ROAD  
MAMARONECK, NY 10543  
VILLAGE OF MAMARONECK

SHEET NUMBER  
C-0.0

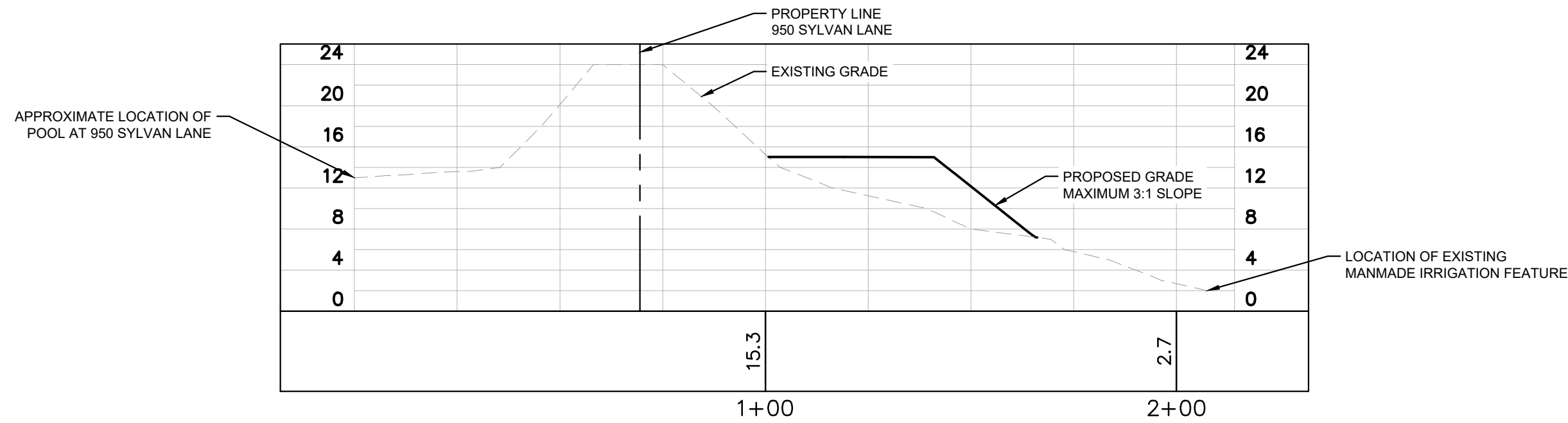




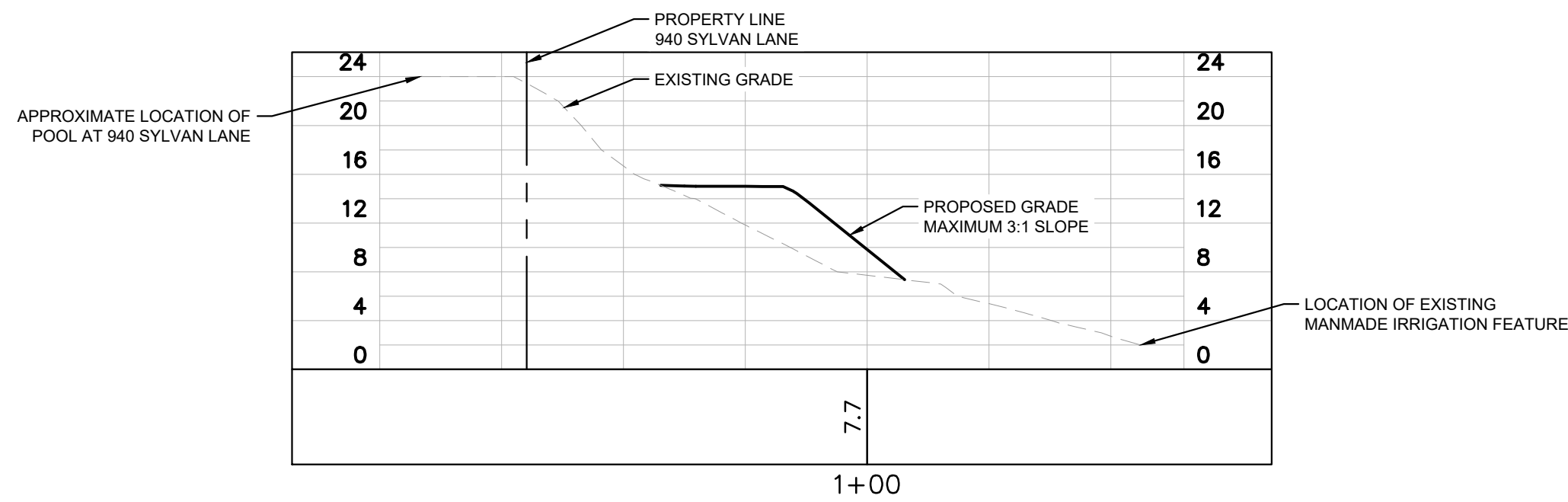




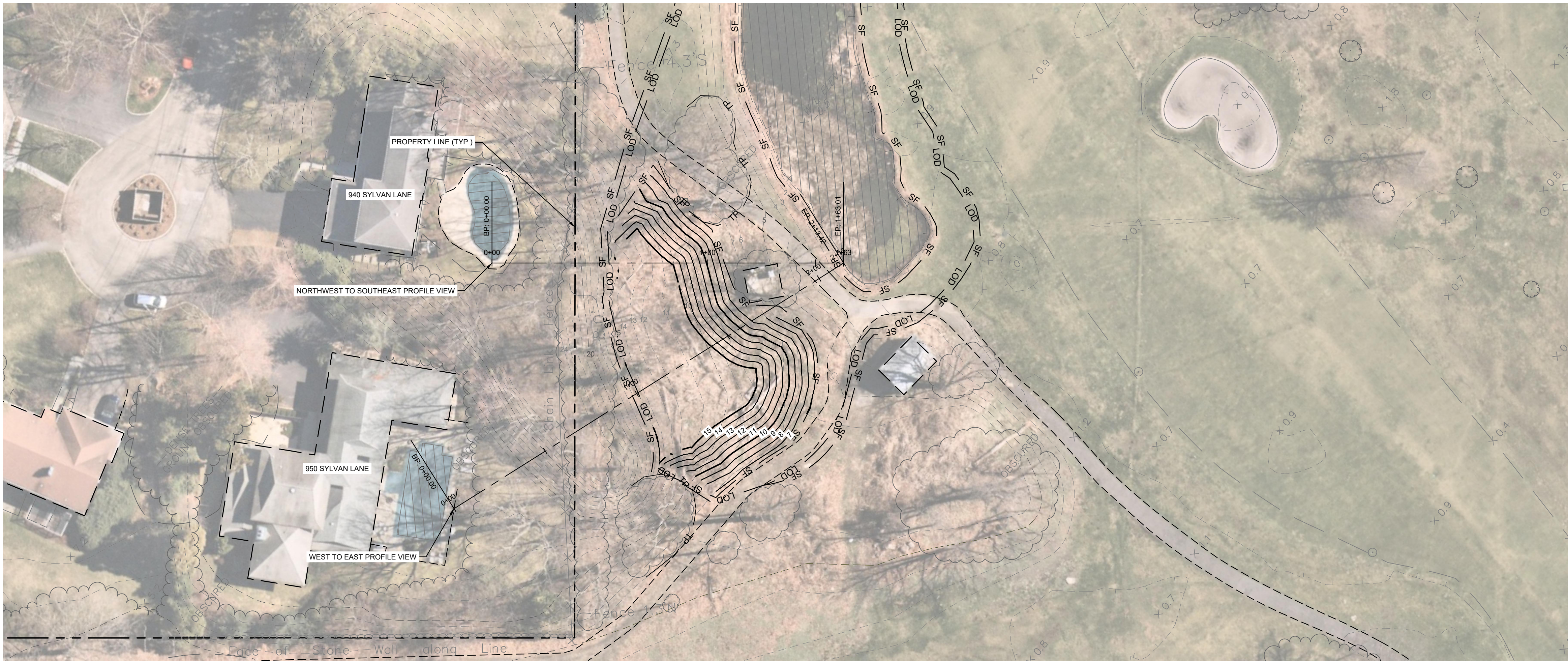
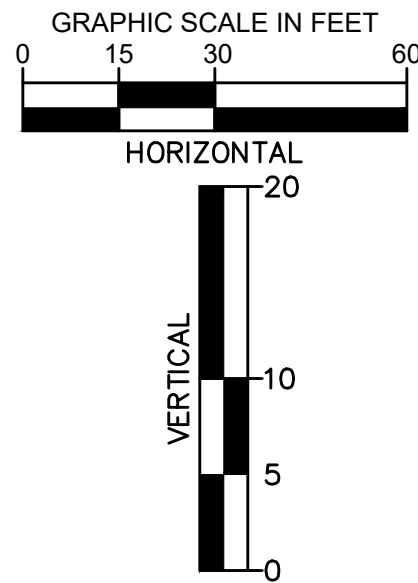




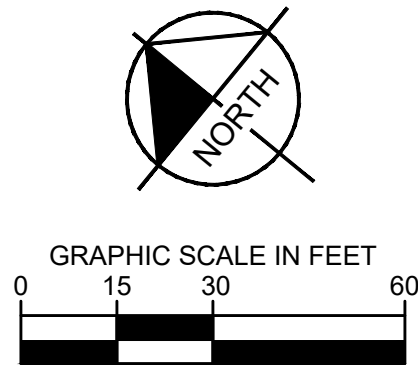
PROFILE FROM WEST TO EAST  
950 SYLVAN LANE TO MANMADE IRRIGATION FEATURE



PROFILE FROM NORTHWEST TO SOUTHEAST  
940 SYLVAN LANE TO MANMADE IRRIGATION FEATURE



ALIGNMENTS OF PROFILE VIEWS

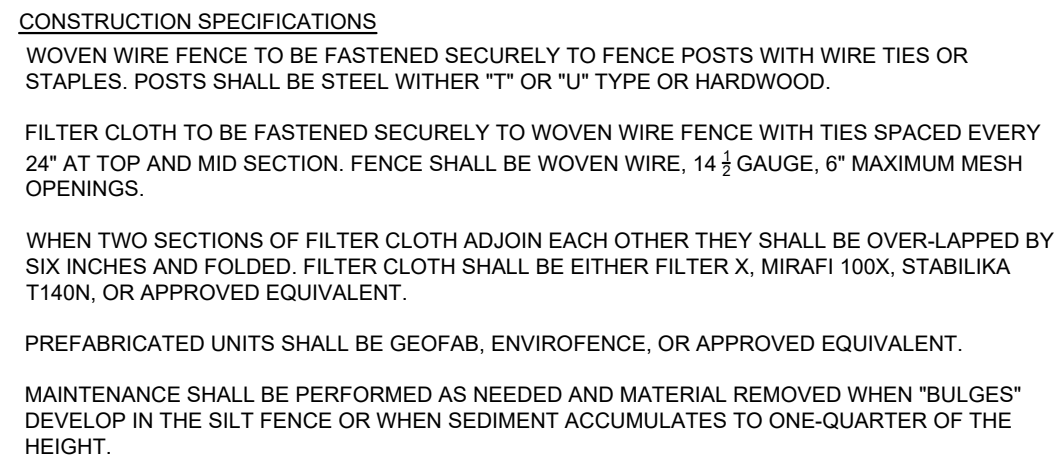


DRAFT	
<b>Kimley»Horn</b> New York	
© 2023 KIMLEY-HORN ENGINEERING AND LANDSCAPE ARCHITECTURE OF NEW YORK, P.C. 1 NORTH LEXINGTON AVENUE, SUITE 905 WHITE PLAINS, NY 10601 WWW.KIMLEY-HORN.COM	
05/15/2023	
KHA PROJECT 112056005	DATE 03/28/2023
SCALE: AS SHOWN	TSW PEP
DESIGNED BY: DRAWN BY:	KVH KWH
CHECKED BY:	
STOCKPILE PROFILES	
HAMPSHIRE COUNTRY CLUB 1025 COVE ROAD MAMARONECK, NY 10543 VILLAGE OF MAMARONECK	NEW YORK
SHEET NUMBER C-3.2	
NO.	REVISIONS
DATE	BY



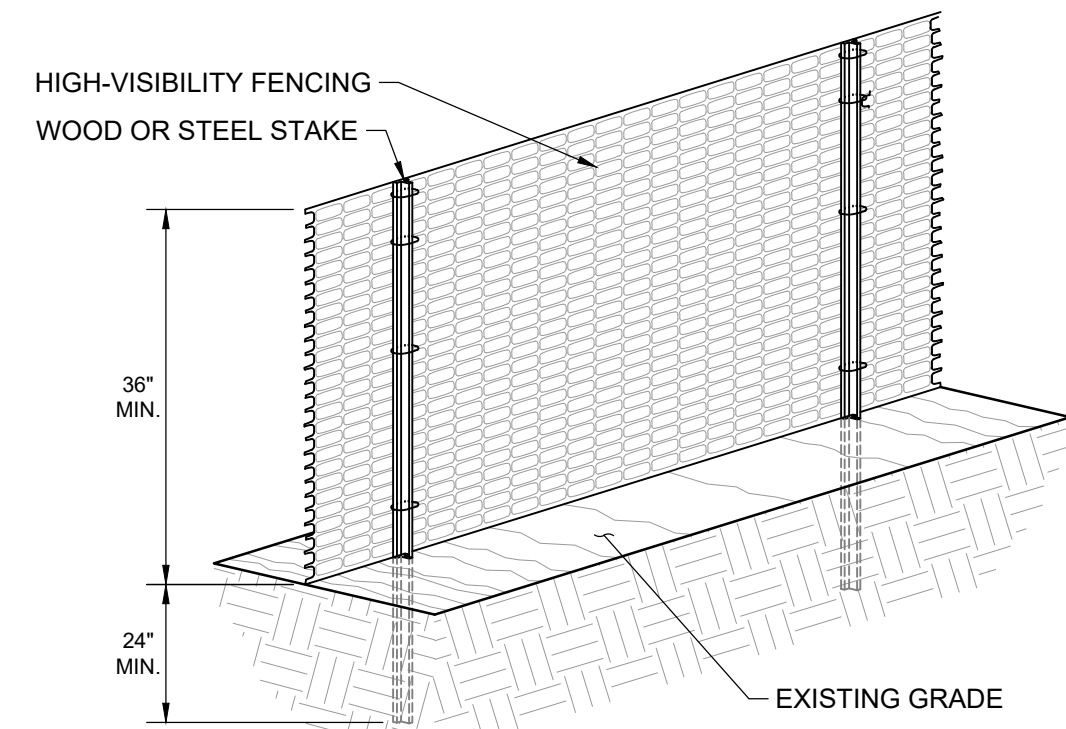
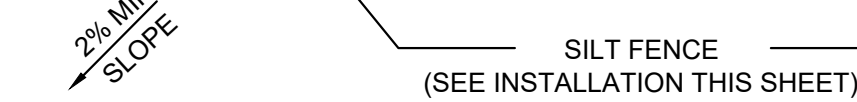






1. STONE SIZE - USE 3" STONE, OR RECLAIMED OR RECYCLED CONCRETE EQUIVALENT.
2. LENGTH - AS REQUIRED, BUT NOT LESS THAN 75 FEET.
3. THICKNESS - NOT LESS THAN TWELVE (12) INCHES.
4. WIDTH - TWENTY FIVE (20) FOOT MINIMUM, BUT NOT LESS THAN THE FULL WIDTH AT POINTS WHERE INGRESS OR EGRESS OCCURS.
5. FILTER CLOTH - WILL BE PLACED OVER THE ENTIRE AREA PRIOR TO PLACING OF STONE.
6. SURFACE WATER - ALL SURFACE WATER FLOWING OR DIVERTED TOWARD CONSTRUCTION ENTRANCES SHALL BE RIFED ACROSS THE ENTRANCE. IF PIPING IS IMPRACTICAL, A MOUNTABLE BERM WITH 5:1 SLOPES WILL BE PERMITTED.
7. MAINTENANCE - THE ENTRANCE SHALL BE MAINTAINED IN A CONDITION WHICH WILL PREVENT TRACKING OR FLOWING OF SEDIMENT ONTO PUBLIC RIGHTS-OF-WAY. ALL SEDIMENT SPILLED, DEPOSITED, WASHED OR TRACED ONTO PUBLIC RIGHTS-OF-WAY MUST BE REMOVED IMMEDIATELY. THIS MAY REQUIRE PERIODIC TOP DRESSING WITH ADDITIONAL STONE AS CONDITIONS DEMAND AND REPAIR AND/OR CLEANOUT.
8. WHEN WASHING IS REQUIRED, IT SHALL BE DONE ON A AREA STABILIZED WITH STONE AND WHICH DRAINS INTO AN APPROVED SEDIMENT TRAPPING DEVICE.
9. PERIODIC INSPECTION AND NEEDED MAINTENANCE SHALL BE PROVIDED AFTER EACH RAIN.

1. AREA CHOSEN FOR STOCKPILING OPERATIONS SHALL BE DRY AND STABLE.
2. MAXIMUM SLOPE OF STOCKPILE SHALL BE 3:1.
3. UPON COMPLETION OF SOIL STOCKPILING, EACH PILE SHALL BE SURROUNDED WITH EITHER SILT FENCING, THEN STABILIZED WITH VEGETATION OR COVERED.
4. SEE SILT FENCE DETAIL ON THIS SHEET.
5. STABILIZE AS NOTED.



**NOTE:**  
FURNISH AND INSTALL TEMPORARY HIGH-VISIBILITY FENCING PRIOR TO ANY  
MAINTENANCE ACTIVITIES.

01	REINFORCED SILT FENCE	02	STABILIZED CONSTRUCTION ENTRANCE	03	STOCKPILE AREA	04	TREE PROTECTION FENCE
	SCALE: NTS SOURCE: NYSDEC SESC BLUE BOOK		SCALE: NTS SOURCE: NYSDEC SESC BLUE BOOK		SCALE: NTS SOURCE: KIMLEY-HORN (ADAPTED FROM NYSDEC SESC BLUE BOOK)		SCALE: NTS SOURCE: KIMLEY-HORN

SHEET NUMBER C-3.4		HAMPSHIRE COUNTRY CLUB 1025 COVE ROAD MAMARONECK, NY 10543 VILLAGE OF MAMARONECK		NEW YORK	
GRADING AND EROSION & SEDIMENT CONTROL DETAILS					
KHA PROJECT 112026005					
DATE 03/28/2023					
SCALE: AS SHOWN					
DESIGNED BY: TSW					
DRAWN BY: PREP					
CHECKED BY: KKH					
		 05/15/2023			
		 © 2023 KIMLEY-HORN ENGINEERING AND LANDSCAPE ARCHITECTURE, P.C. 1 NORTH LEXINGTON AVENUE, SUITE 505 WHITE PLAINS, NY 10601 WWW.KIMLEY-HORN.COM			
		DRAFT			
				NO. REVISIONS	
				DATE BY	
				REVISED PER VILLAGE CONSULTANT PLANNERS COMMENTS	
				PREP	