

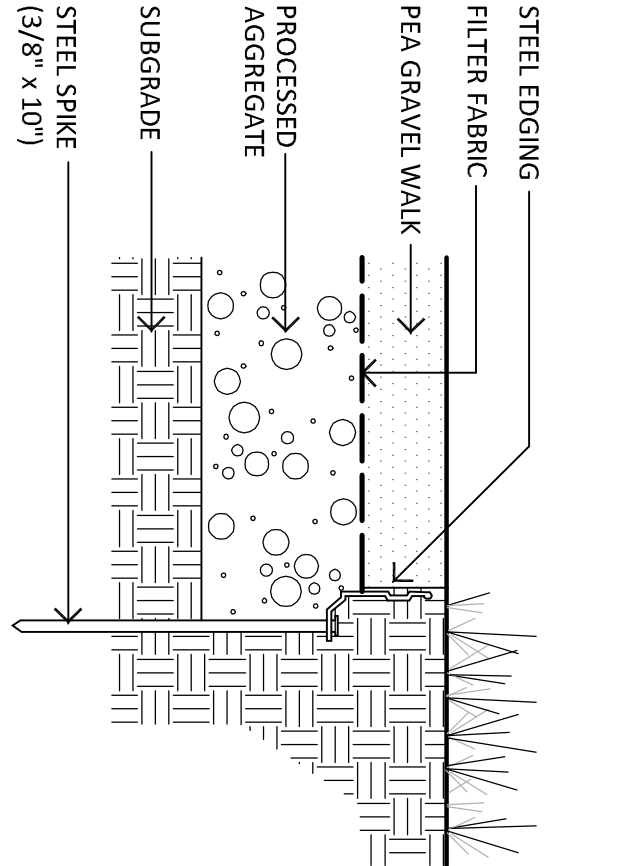
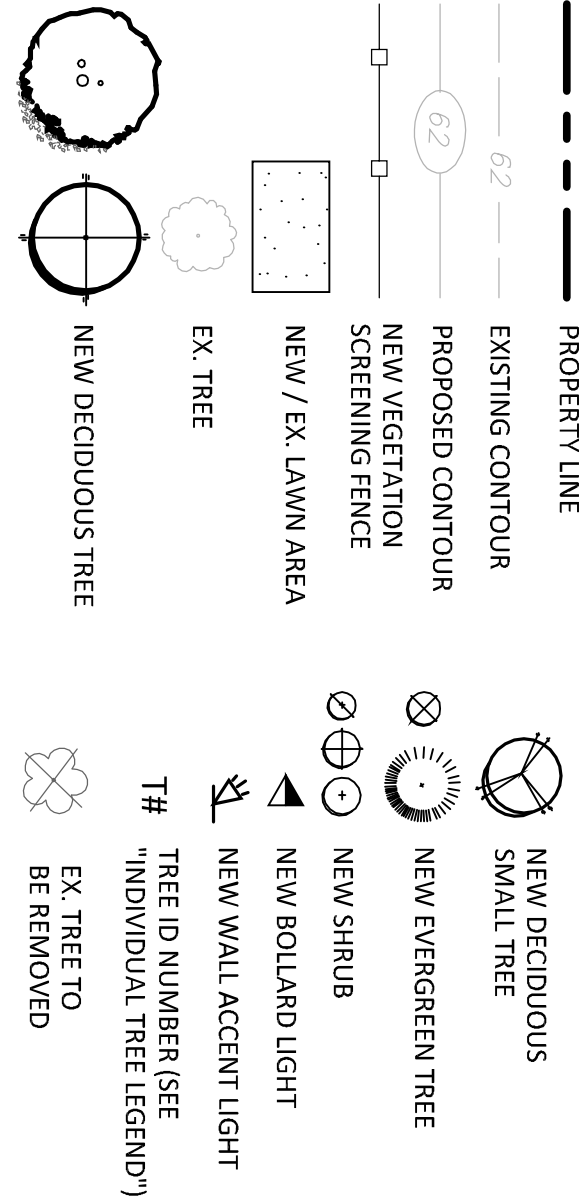
INDIVIDUAL

TREE	SIZE	SURVEY ID	ACTUAL ID	STATUS	COMMENTS
T1	8"	CHRY	REMOVE	EXTREME LEAN	
T2	36"	MAP	SILVER MAPLE	REMOVE	DEAD TOP BRANCHES, & VINE COVERED TRUNK
T3	24"	OAK	ELM	REMOVE	VINE COVERED TRUNK
T4	20"	TREE	ELM	REMOVE	VINE COVERED TRUNK
T5	12"	CED.	CEDAR	REMOVE	THIN
T7	12"	CED.	CEDAR	REMOVE	THIN
T8	12"	MAP	ELM	REMOVE	THIN
T9	6"	CED.	CEDAR	REMOVE	NONNATIVE, OFFSITE, & VINE COVERED
T10	20"	LOC.	LOCUST	REMOVE	NONNATIVE, OFFSITE, & VINE COVERED
T11	18"	LOC.	LOCUST	REMOVE	& VINE COVERED

TREE PRESERVATION PLAN CHART:

(FOR LOTS LESS THAN 14,500 SQUARE FEET)	DBH OF TREE REMOVED (INCHES)	REPLANTING REQUIREMENT
UNDER 3"	NO REPLANTING NECESSARY	
3" OR GREATER:	ONE 2 TO 2 1/2 DBH TREE	
LOT (PROJECT AREA):	10,308-SF	
TREES TO BE REMOVED 8" AND GREATER:	11 (2 OFFSITE)	
TREES REQUIRED FOR REPLANTING:	11	
TREES PROPOSED:	9	

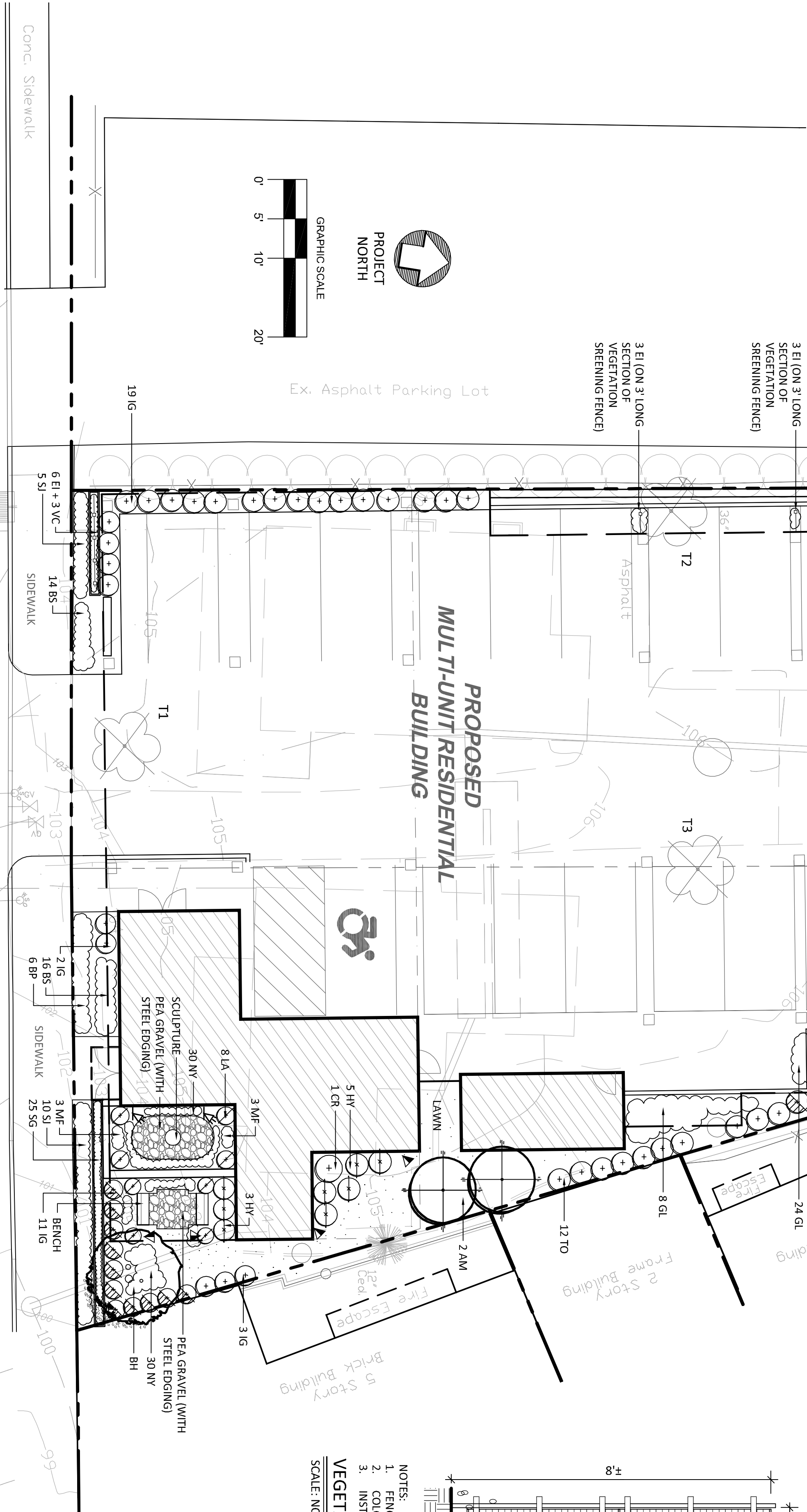
LEGEND



- NOTES:
1. EDGING BY PERMALOC STRUCTURE EDGE AS MANUFACTURER BY PERMALOC CORPORATION (OR APPROVED EQUIVALENT).
 2. FINISH SHALL BE ELECTROSTATICALLY APPLIED BASED ON BLACK PAINT/PROJECT ENGINEER.

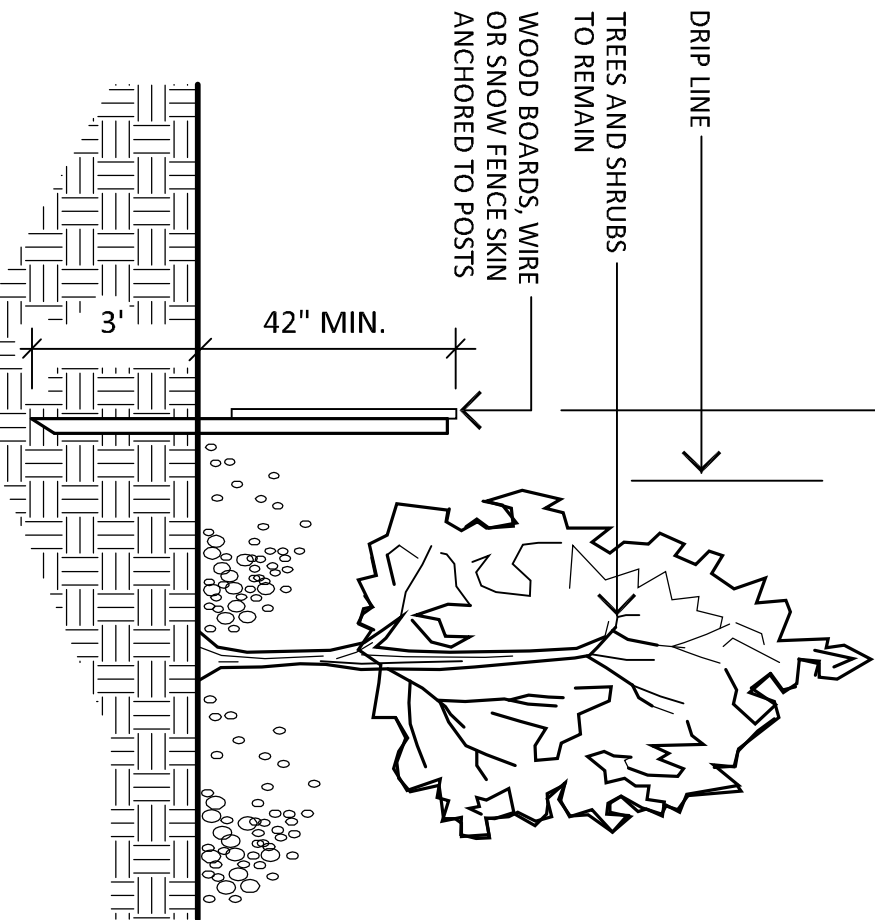
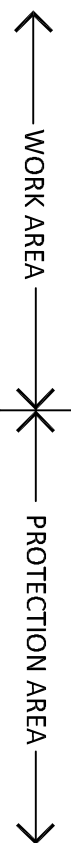
METAL EDGING (TYP.)

SCALE: NOT TO SCALE



PLAN

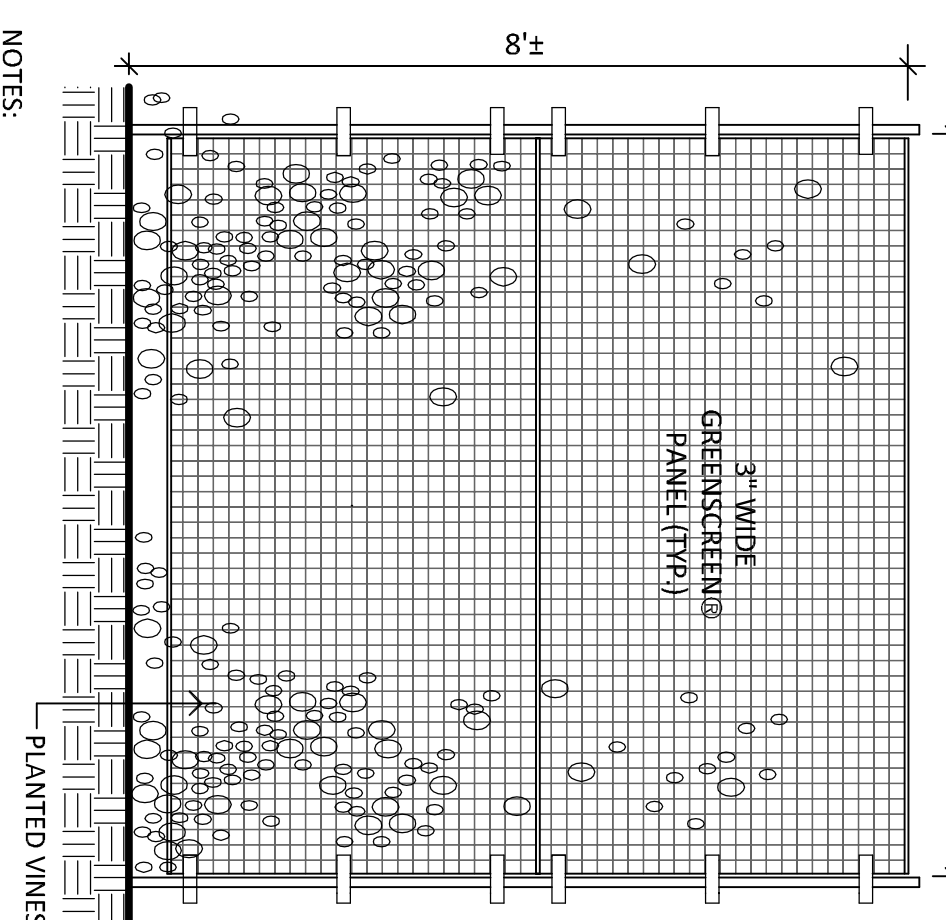
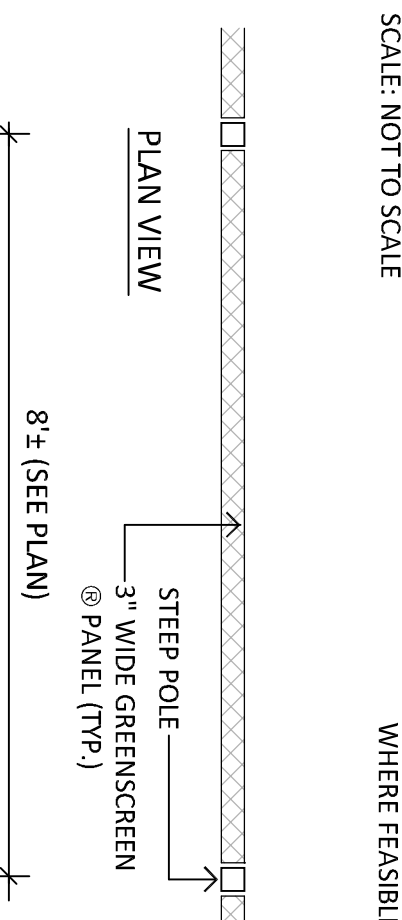
SCALE: 1"=10'



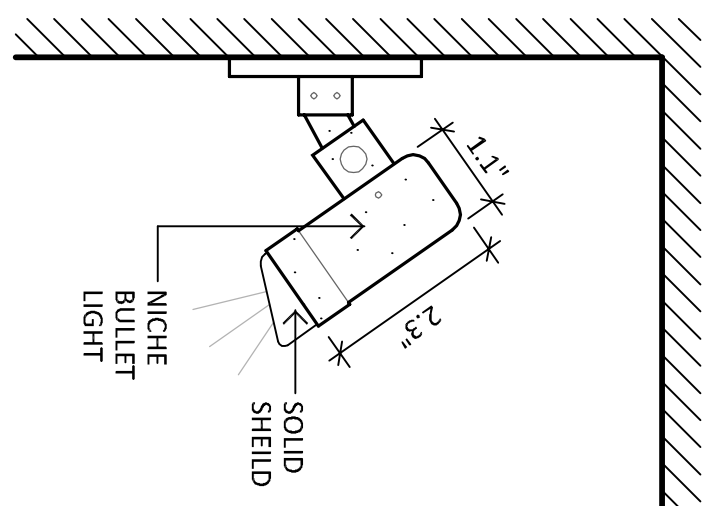
- NOTES:
1. INSTALL TREE PROTECTION FENCE AT EDGE OF SITE DISTURBANCE OF OFFSITE TREES TO REMAIN PRIOR TO THE START OF SITE WORK.
 2. NO CONSTRUCTION ACTIVITIES, EQUIPMENT OR STORAGE OF MATERIALS SHALL BE ALLOWED ON THE INSIDE OF THE TREE PROTECTION FENCE EXCEPT AS APPROVED BY THE PROJECT ENGINEER.
 3. POST TO BE SET APPROXIMATELY 8" O.C.
 4. TREE PROTECTION FENCE SHALL BE MAINTAINED THROUGHOUT THE CONSTRUCTION PERIOD.

TREE PROTECTION FENCE (TYP.)

SCALE: NOT TO SCALE



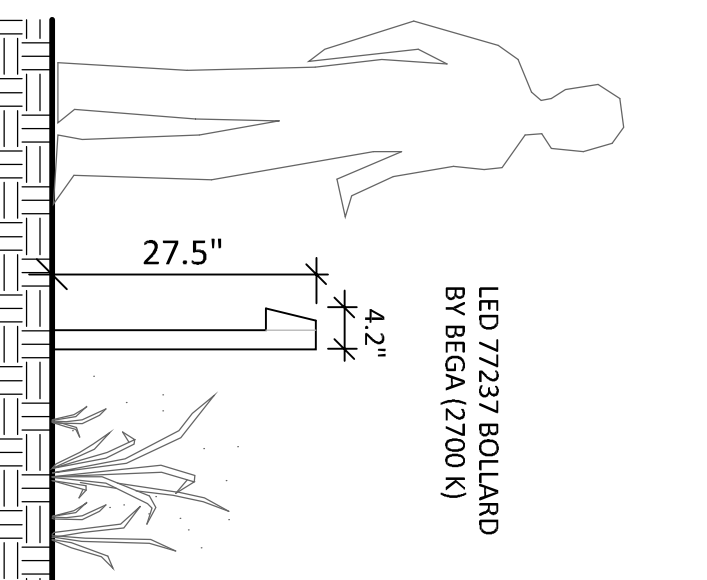
- NOTES:
1. FENCE TO BE BY GREENSCREEN (OR EQUIVALENT).
 2. COLOR OF FENCE TO BE BLACK.
 3. INSTALL PER THE MANUFACTURER'S RECOMMENDATIONS.
- VEGETATION SCREENING FENCE (TYP.)
- SCALE: NOT TO SCALE



- NOTE:
1. SMALL FLEXIBLE ACCENT LIGHT
 2. FIXTURE BY COASTALSOURCE.COM.
 3. FINISH WITH 2700K LED LIGHT SOURCE.

WALL ACCENT LIGHT

SCALE: NOT TO SCALE



- NOTES:
1. INSTALL BOLLARD AS RECOMMENDED BY THE MANUFACTURER.
 2. COLOR SHALL BE BRONZE.

BOLLARD LIGHT (TYP.)

SCALE: NOT TO SCALE

NOTES:

1. CONTACT "CALL BEFORE YOU DIG" AT 1-800-922-4455 TO HAVE UNDERGROUND UTILITY LINES MARKED BY THEM PRIOR TO START OF ANY EXCAVATION WORK.
2. EXACT LOCATION OF PROPOSED PLANTINGS AND SPECIES TYPES MAY VARY FROM THIS PLAN BASED ON SITE PLAN REVISIONS AND/OR ACTUAL FIELD CONDITIONS.
3. PLANT SPECIES SUBSTITUTIONS MAY BE MADE WITH THE APPROVAL OF THE PROJECT LANDSCAPE ARCHITECT PRIOR TO PLANTING. SUBSTITUTED PLANTS SHALL BE AT AN EQUAL OR GREATER SIZE AS NOTED USING A SIMILAR TYPE PLANT.
4. PLANTING METHODS SHALL BE IN ACCORDANCE WITH THE "AMERICAN STANDARDS FOR NURSERY STOCK", LATEST EDITION, AS PUBLISHED BY THE AMERICAN NURSERY & LANDSCAPE ASSOCIATION.
5. THE CONTRACTOR SHALL VERIFY WITH THE PROJECT ENGINEER THAT THE NEW PLANTINGS DO NOT INTERFERE WITH EXISTING AND/OR PROPOSED UTILITIES, SIGHT LINES, AND/OR STRUCTURES.
6. THIS PLAN FOR PLANTING PURPOSES ONLY. SEE PLANS BY OTHERS FOR ADDITIONAL INFORMATION.
7. SEED LAWN AREAS WITH A HIGH QUALITY FESCUE AND BUDGET SEED MIXTURE. APPLY SOIL AMENDMENTS AND SEED AREAS AT THE METHODS AND RATE RECOMMENDED BY THE MANUFACTURER.

LANDSCAPE LIGHTING NOTES:

1. SITE LIGHTING INFORMATION AND LIGHTING PLANS PREPARED BY ENVIRONMENTAL LAND SOLUTIONS, LLC ARE DESIGNED FOR GENERAL LANDSCAPE AESTHETIC PURPOSES ONLY. LIGHTING INFORMATION SHOWN ON THIS PLAN SHALL NOT BE USED FOR SECURITY OR SAFETY PURPOSES.
2. LOCATION AND TYPE OF LIGHT FIXTURES ARE TYPICAL, AND MAY VARY BASED ON ACTUAL FIELD CONDITIONS, SITE AND ARCHITECTURAL PLAN REVISIONS, USE OF EXISTING LIGHTING (IF ANY), NEW BUILDING MOUNTED LIGHTING, AESTHETICS, AND CONSULTATIONS WITH LIGHTING CONSULTANT AND/OR MANUFACTURER.
3. THIS PLAN ASSUMES THAT THE BUILDING WILL HAVE WALL MOUNTED FIXTURES (BY OTHERS) TO LIGHT THE FACADE AND ADJACENT LANDSCAPE AREAS (INCLUDING WALKS AND DOORS).
4. INSTALL LIGHT FIXTURES AS RECOMMENDED BY THE MANUFACTURER.
5. LIGHT POLES SHALL BE ON A BASE FLUSH WITH GRADE IF FEASIBLE.

PLANT LIST

QTY	KEY	BOTANICAL NAME	COMMON NAME	SIZE	ROOT
5	AM	ACER RUBRUM 'ARMSTRONG'	ARMSTRONG RED MAPLE	2 1/2-3" CAL.	B&B
3	BH	BETULA NIGRA 'HERITAGE'	HERITAGE BIRCH	10-12' HT.	B&B
1	SH	QUERCUS IMBERGARA	SHINGLE OAK	2 1/2-3" CAL.	B&B
15	TO	THUJA OCCIDENTALIS 'TENEREAD GREEN'	EMERALD GREEN ARBORVITAE	5-6' HT.	B&B
2	CT	CELTIS ALNIFOLIA 'RUBY SPICE'	RUBY SPICE CELTIS	2-3' HT.	CONT.
8	HY	HYDRANGEA ARBORESCENS 'ANNABELLE'	ANNABELLE HYDRANGEA	2-3' HT.	CONT.
25	SI	HYPERICUM ANDROSOLIA 'SUNBURST'	SUNBURST ST. JOHNSWORT	24-30" HT.	CONT.
48	BP	ILEX GLABRA 'SHAMROCK'	COMPACT INKBERY	2-3' HT.	CONT.
6	LA	LEUCODORAE 'MILLANS' COMPACTA'	BLUE PACIFIC LILAC	18-24" SPR.	CONT.
8	GL	NUSS GRO-LOW	DIAN FLECKENHOF	21-24" HT.	CONT.
44	MF	ADANTUM PEDATUM	MADEIRA FERN	2-3' HT.	CONT.
14	SG	PANICUM VIRGATUM 'HANSE HERMS'	HANSE HERMS SWITCHGRASS	1 GAL.	CONT.
30	BS	SCHIZACHYRIUM SCOPARIUM 'CAROUSEL'	CAROUSEL LITTLE BLUESTEM	1 GAL.	CONT.
60	NY	THELYPTERIS NOVEBORACENSIS	NEW YORK FERN	CONT.	CONT.
12	EI	HEDERA HELIX 'BAUTICA'	ENGLISH IVY	CONT.	CONT.
3	VC	PARTHENOCISSUS QUINQUEFOLIA	VIRGINIA CREEPER	CONT.	CONT.

REVISIONS:	DATE:	DESCRIPTION:
1	11.21.22	PER REVIEW COMMENT
2	5.3.23	REMOVE OFFSITE TREES
3	5.3.23	REMOVE OFFSITE TREES



ENVIRONMENTAL LAND SOLUTIONS, LLC
Landscape Architecture and Environmental Planning
8 KNIGHT STREET, SUITE 203
NORWALK, CONNECTICUT 06851
Tel: (203) 855-7879 Fax: (203) 855-7836
info@elsllc.net www.elsllc.net



SCALE: AS SHOWN
DRAWING NO.: LP.1