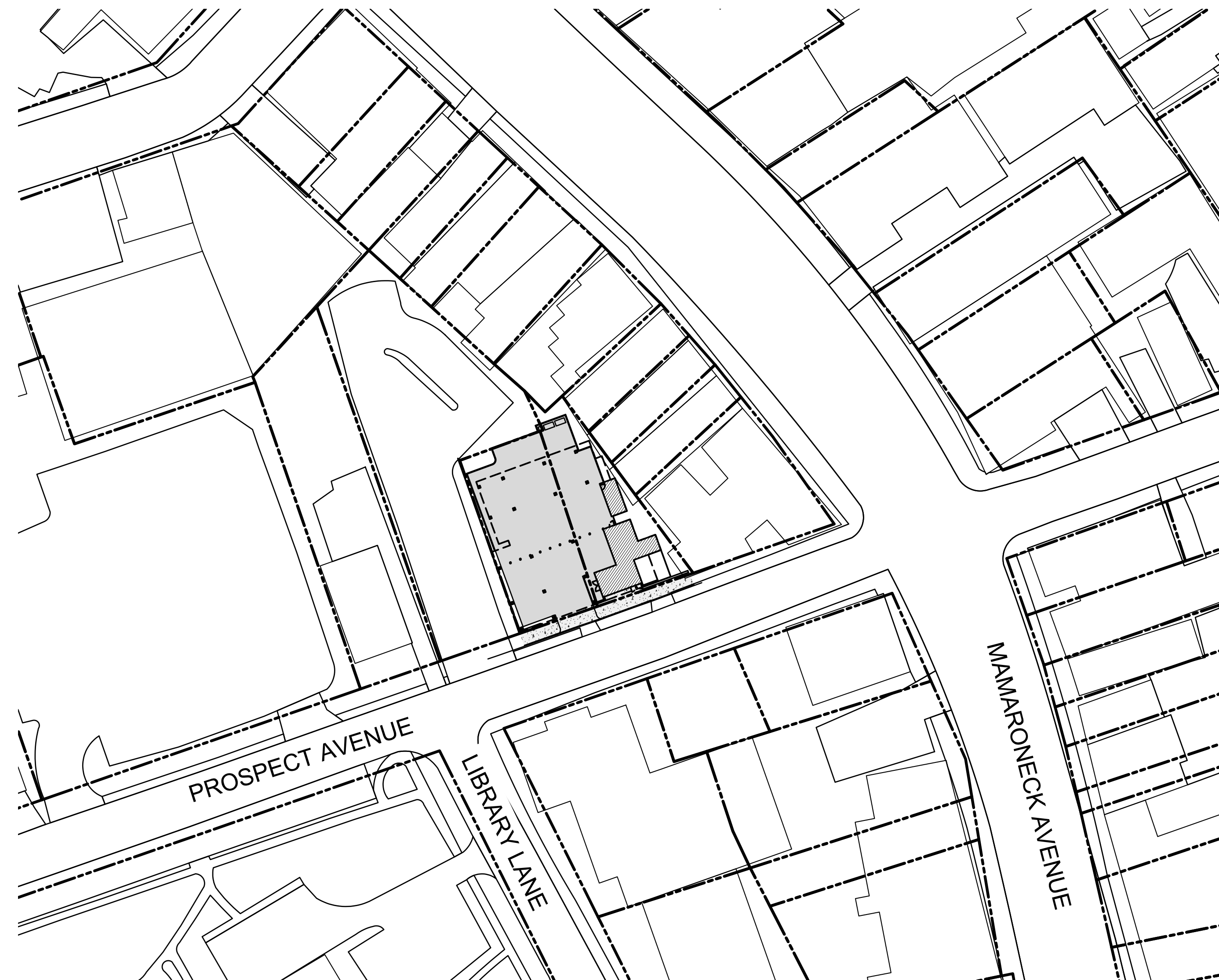
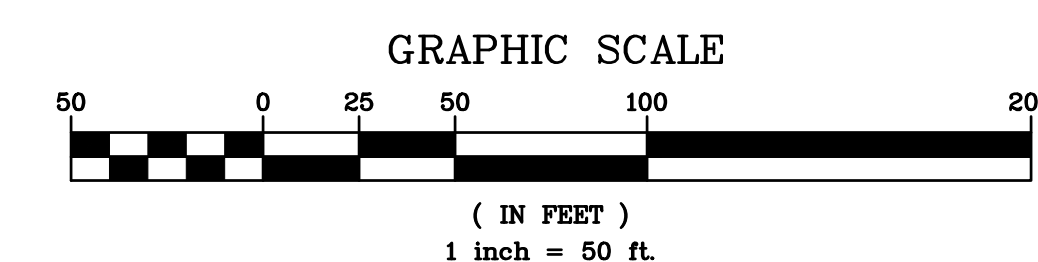


PROPOSED RESIDENTIAL DEVELOPMENT  
129-133 PROSPECT AVENUE  
MAMARONECK, NY 10543  
JUNE 15, 2022



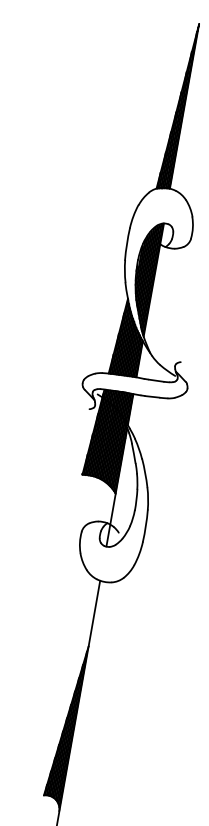
INDEX OF DRAWINGS		
Prepared by Hudson Engineering & Consulting, P.C.		
Sheet No.	Sheet Title	Last Revised Date
COVER	Cover Sheet	6/15/2022
C-1	Existing Conditions/Demolition Plan	6/15/2022
C-2	Stormwater Management and Sediment & Erosion Control Plan	6/15/2022
C-3	Details	6/15/2022
C-4	Details	6/15/2022



ANY ALTERATIONS OR REVISIONS OF THESE PLANS, UNLESS DONE BY OR UNDER THE DIRECTION OF THE NYS LICENSED AND REGISTERED ENGINEER THAT PREPARED THEM, IS A VIOLATION OF THE NYS EDUCATION LAW.

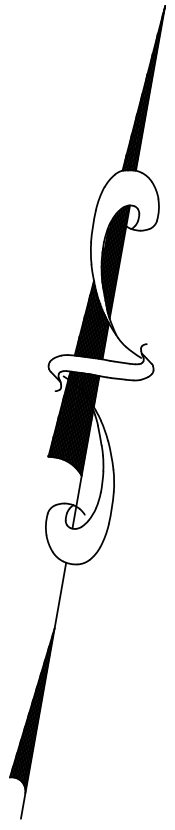
[illegible]





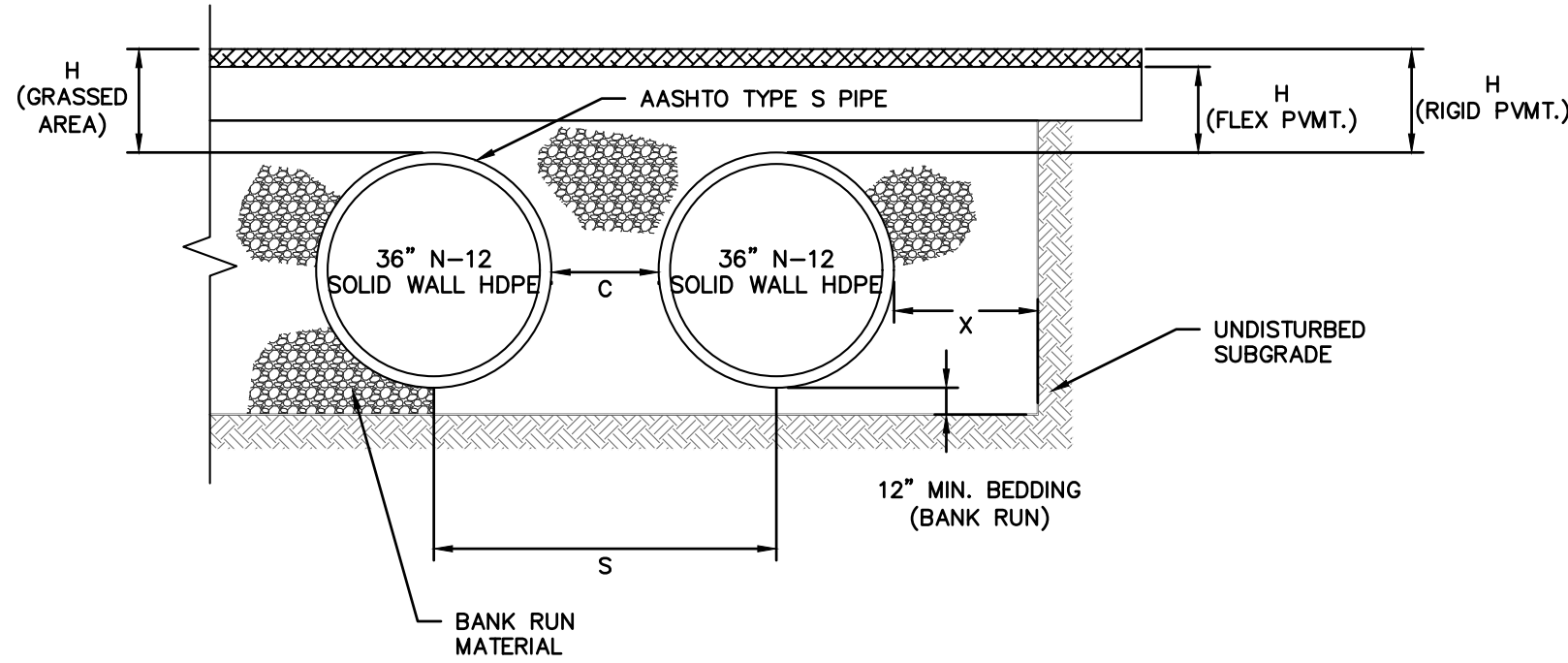
C-1





C-2

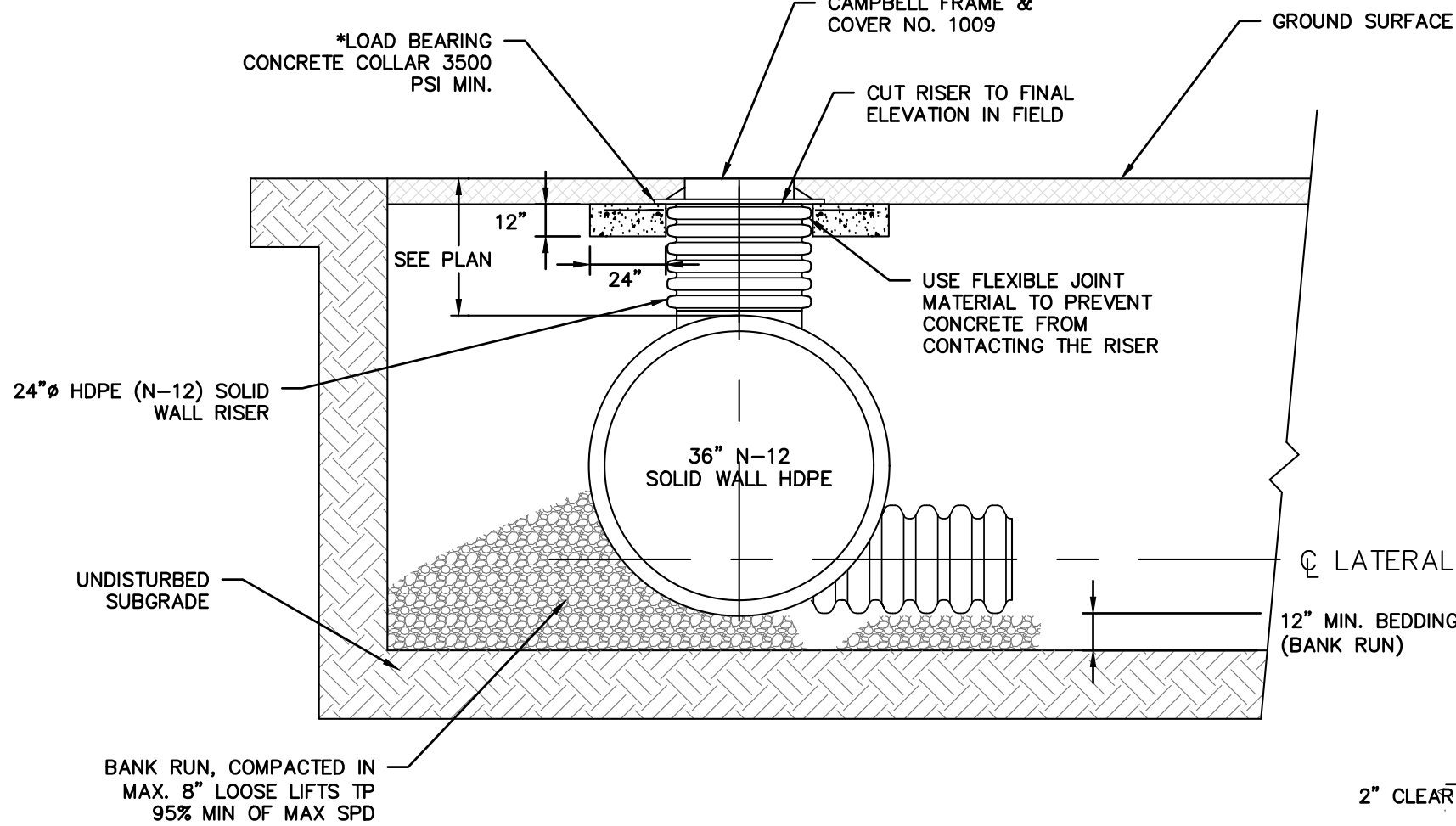




### ATTENUATION GALLERY SECTION

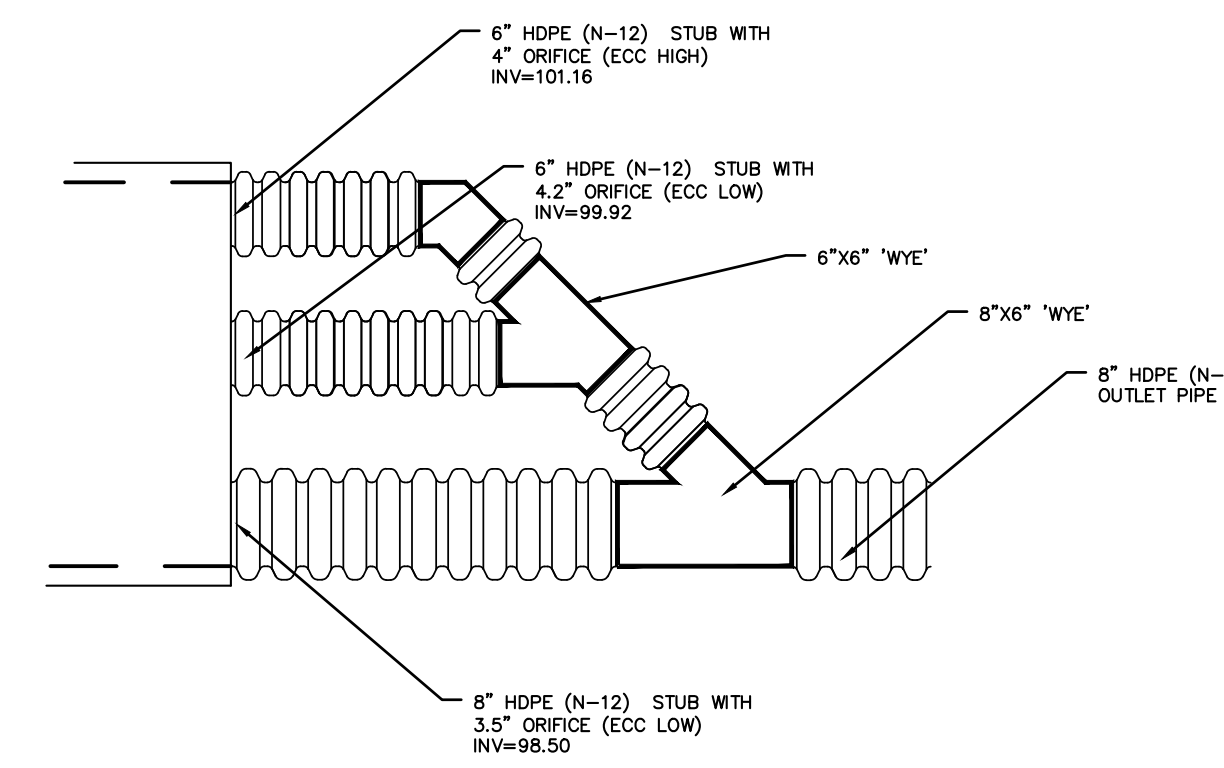
- NOTES:**
- THE ATTENUATION/EXFILTRATION GALLERY SHALL BE INSTALLED IN ACCORDANCE WITH ASTM D2321, LATEST EDITION AND THE MANUFACTURER'S PUBLISHED INSTALLATION GUIDELINES.
  - MEASURES SHOULD BE TAKEN TO PREVENT THE MIGRATION OF NATIVE FINES INTO THE BACKFILL MATERIAL, WHEN REQUIRED. SEE ASTM D2321.
  - FOUNDATION: WHERE THE TRENCH BOTTOM IS UNSTABLE, THE CONTRACTOR SHALL EXCAVATE TO A DEPTH REQUIRED BY THE ENGINEER AND REPLACE WITH SUITABLE MATERIAL AS SPECIFIED BY THE ENGINEER. AS AN ALTERNATIVE AND AT THE DISCRETION OF THE DESIGN ENGINEER, THE TRENCH BOTTOM MAY BE STABILIZED USING A GEOTEXTILE MATERIAL.
  - BEDDING: SUITABLE MATERIAL SHALL BE BANK RUN MATERIAL. THE CONTRACTOR SHALL PROVIDE DOCUMENTATION FOR MATERIAL SPECIFICATION TO ENGINEER. UNLESS OTHERWISE NOTED BY THE ENGINEER, MINIMUM BEDDING THICKNESS SHALL BE 12" MINIMUM.
  - INITIAL BACKFILL: SUITABLE MATERIAL SHALL BE BANK RUN MATERIAL IN THE PIPE ZONE EXTENDING NOT LESS THAN 6" ABOVE CROWN OF PIPE. THE CONTRACTOR SHALL PROVIDE DOCUMENTATION FOR MATERIAL SPECIFICATION TO ENGINEER. MATERIAL SHALL BE INSTALLED AS REQUIRED IN ASTM D2321, LATEST EDITION.
  - MINIMUM COVER: MINIMUM COVER OVER ALL ATTENUATION/EXFILTRATION GALLERIES IN NON-TRAFFIC APPLICATIONS (GRASS OR LANDSCAPE AREAS) IS 12" FROM TOP OF PIPE TO GROUND SURFACE. ADDITIONAL COVER MAY BE REQUIRED TO PREVENT FLOATATION. FOR TRAFFIC APPLICATIONS, MINIMUM COVER IS 12" UP TO 36" DIAMETER PIPE AND 24" OF COVER FOR 42" - 60" DIAMETER PIPE. MEASURED FROM TOP OF PIPE TO BOTTOM OF FLEXIBLE PAVEMENT OR TO TOP OF RIGID PAVEMENT.
  - ALL PIPE STUDS, ORIFICE PLATES, FITTINGS, BENDS, TEES, ETC. SHALL BE MANUFACTURED AT THE FACTORY.

NOMINAL DIAMETER	NOMINAL O.D.	TYPICAL SPACING "C"	TYPICAL SPACING "S"	TYPICAL SIDE WALL "X"	H (NON-TRAFFIC)	H (TRAFFIC)
12"	14.5"	11"	25.4"	8"	12"	12"
15"	18"	12"	28.9"	8"	12"	12"
18"	21"	17"	33.9"	9"	12"	12"
24"	28"	13"	40.7"	10"	12"	12"
30"	36"	18"	53.1"	18"	12"	12"
36"	42"	22"	63"	18"	12"	12"
42"	48"	24"	71.9"	18"	12"	24"
48"	54"	25"	78.5"	18"	12"	24"
60"	67"	24"	90"	18"	12"	24"



### ACCESS MANHOLE STRUCTURE

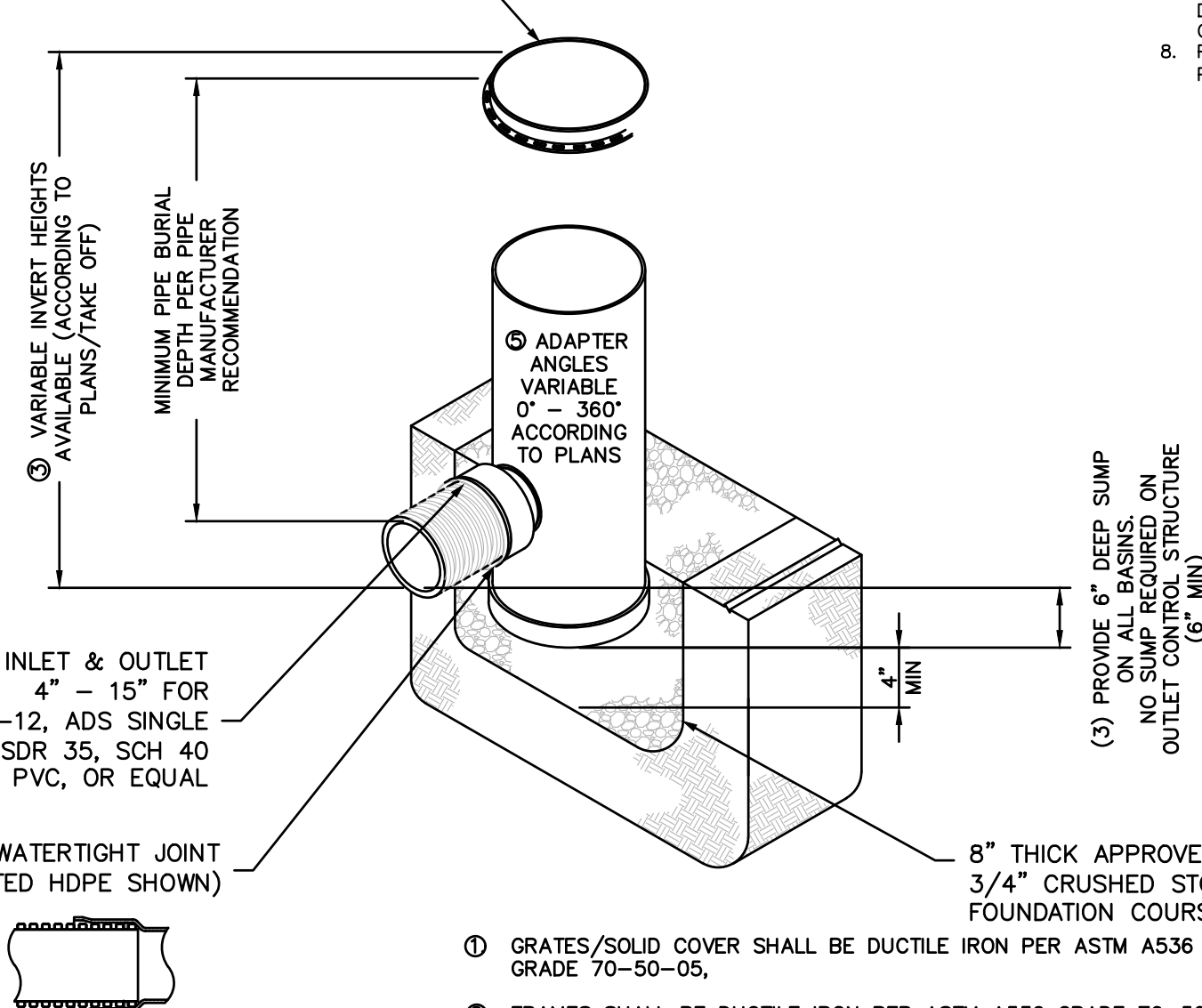
- \* LOAD BEARING CONCRETE COLLAR SHALL BE CONSTRUCTED IN TRAFFIC AREAS SUCH THAT THE LIVE LOAD IS TRANSMITTED TO THE SURROUNDING SOIL AND NOT DIRECTLY TO THE RISER.



### WELDED END PLATE DETAIL

- NOTES:**
- END PLATE TO BE INSTALLED BY MANUFACTURER.
  - ALL ORIFICES SHALL BE DRILLED BY MANUFACTURER.

- (1) (2) PROVIDE INTEGRATED 15"Ø DUCTILE IRON SOLID FRAME & COVER FOR OUTLET CONTROL STRUCTURE. PROVIDE 18"Ø DUCTILE IRON STANDARD FRAME AND GRATE FOR 18"Ø DRAIN INLET. ALL FRAMES AND COVERS/GRATES TO MATCH BASIN O.D.

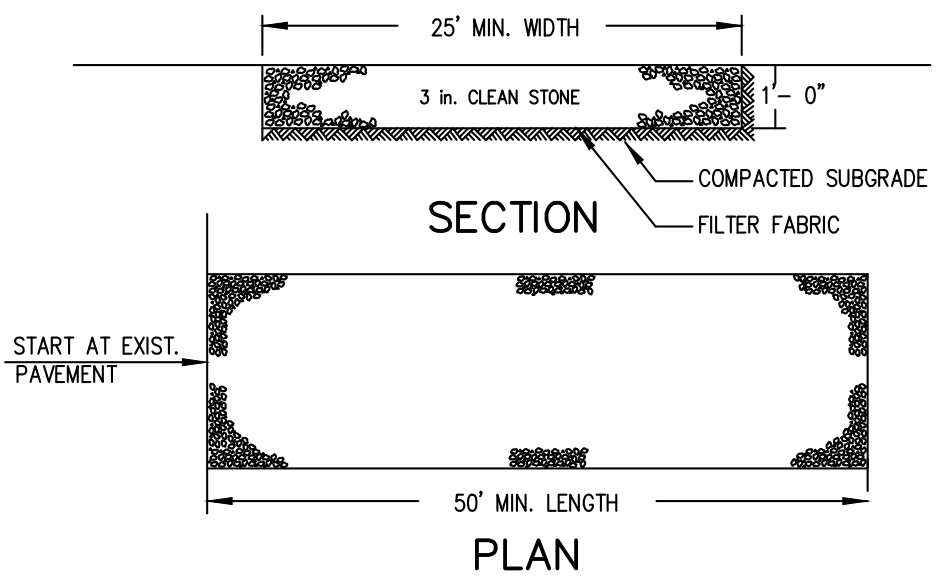


GRATE OPTIONS	LOAD RATING	PART #	DRAWING #
PEDESTRIAN	MEETS H-10	1096CQP	7001-110-207
STANDARD	MEETS H-20	1096CDS	7001-110-208
SOLID COVER	MEETS H-40	1096CSC	7001-110-209
DOME	N/A	1096CQD	7001-110-211
DROP IN GRATE	LIGHT DUTY	1561D	7001-110-079

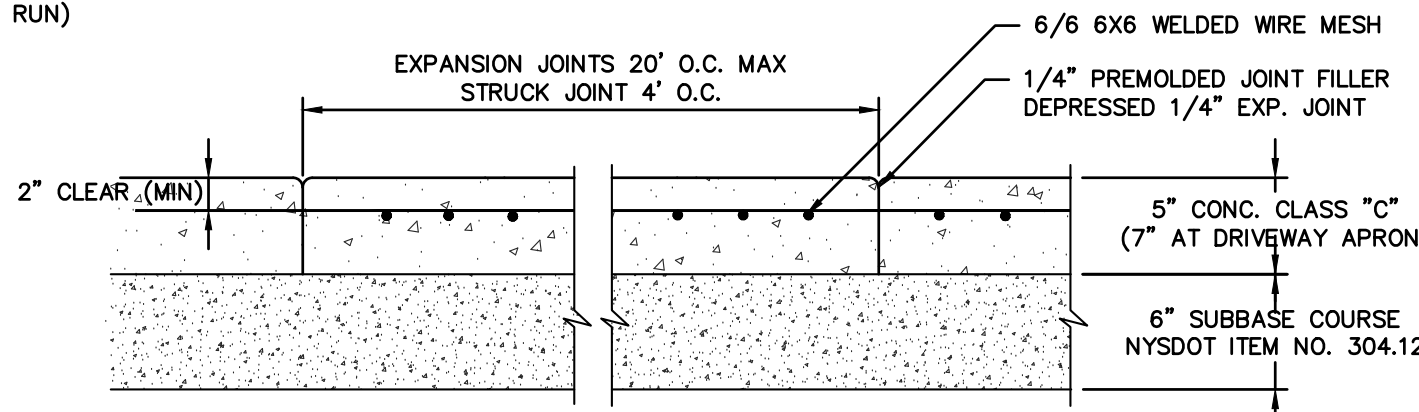
- NOTES:**
- INSTALL BASIN IN ACCORDANCE WITH MANUFACTURER'S RECOMMENDATIONS.
  - PRODUCT SHALL BE NYLOPLAST DRAIN BASIN MANUFACTURED BY ADVANCED DRAINAGE SYSTEMS (ADS) OR APPROVED EQUAL.

### 15"Ø NYLOPLAST BASIN

### Stabilized Construction Entrance



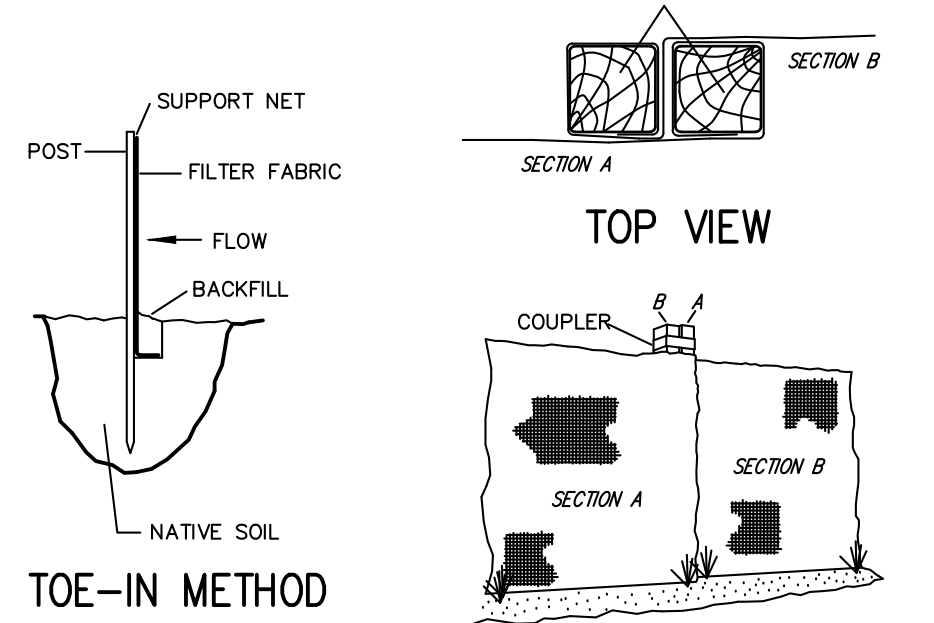
- INSTALLATION NOTES:**
- STONE SIZE - USE 3" STONE, OR RECLAIMED OR RECYCLED CONCRETE EQUIVALENT.
  - LENGTH - AS REQUIRED, BUT NOT LESS THAN 50 FEET (EXCEPT ON A SINGLE RESIDENCE LOT WHERE A 30 FOOT MINIMUM LENGTH WOULD APPLY).
  - THICKNESS - NOT LESS THAN SIX (6) INCHES.
  - WIDTH - 25 FOOT MINIMUM, BUT NOT LESS THAN THE FULL WIDTH AT POINTS WHERE INGRESS OR EGRESS OCCUR.
  - FILTER CLOTH - WILL BE PLACED OVER THE ENTIRE AREA PRIOR TO PLACING OF STONE. FILTER CLOTH WILL NOT BE REQUIRED ON A SINGLE FAMILY RESIDENCE LOT.
  - SURFACE WATER - ALL SURFACE WATER FLOWING OR DIVERTED TOWARD CONSTRUCTION ENTRANCES SHALL BE PIPED ACROSS THE ENTRANCE. IF PIPING IS IMPRACTICAL, A MOUNTABLE BERM WITH 5:1 SLOPES WILL BE PERMITTED.
  - MAINTENANCE - THE ENTRANCE SHALL BE MAINTAINED IN A CONDITION WHICH WILL PREVENT TRACKING OR FLOWING OF SEDIMENT ONTO PUBLIC RIGHT OF WAY THIS MAY REQUIRE PERIODIC TOP DRESSING WITH ADDITIONAL STONE AS CONDITIONS DEMAND AND REPAIR AND/OR CLEANOUT OF ANY MEASURES USED TO TRAP SEDIMENT. ALL SEDIMENT SPILLED, DROPPED, WASHED OR TRACKED ONTO PUBLIC RIGHT OF WAY MUST BE REMOVED IMMEDIATELY.
  - WASHING - WHEELS SHALL BE CLEANED TO REMOVE SEDIMENT PRIOR TO ENTRANCE ONTO PUBLIC RIGHT OF WAY WHEN WASHING IS REQUIRED. IT SHALL BE DONE ON AN AREA STABILIZED WITH STONE AND WHICH DRAINS INTO AN APPROVED SEDIMENT TRAPPING DEVICE.
  - PERIODIC INSPECTION AND NEEDED MAINTENANCE SHALL BE PROVIDED AFTER EACH RAIN.



### CONCRETE WALK

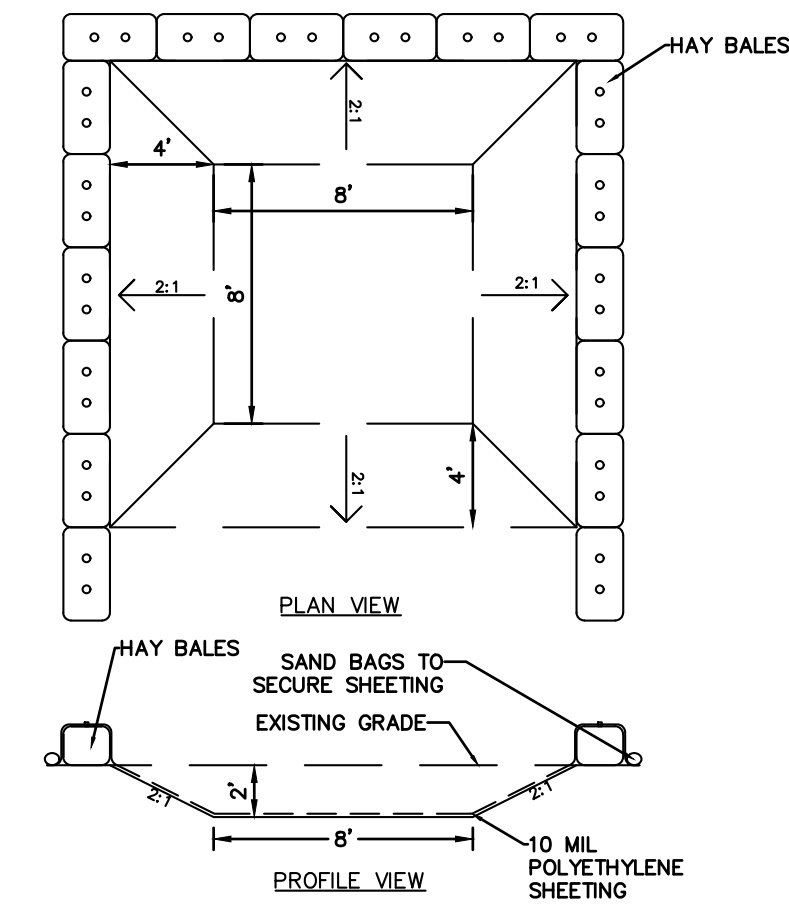
- NOTE:**
- CONCRETE SHALL BE 7" AT ALL DRIVEWAY APRONS.

### Silt Fence



### INSTALLATION NOTES:

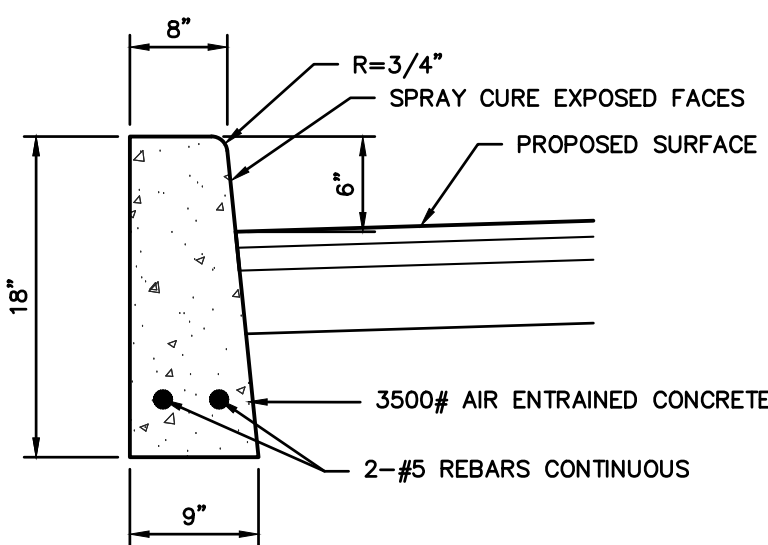
- EXCAVATE A 4 INCH x 4 INCH TRENCH ALONG THE LOWER PERIMETER OF THE SITE.
- UNROLL A SECTION AT A TIME AND POSITION THE POSTS AGAINST THE BACK (DOWNSTREAM) WALL OF THE TRENCH (NET SIDE AWAY FROM DIRECTION OF FLOW).
- DRIVE THE POST INTO THE GROUND UNTIL THE NETTING IS APPROXIMATELY 2 INCHES FROM THE TRENCH BOTTOM.
- LAY THE TOE-IN FLAP OF FABRIC ONTO THE UNDISTURBED BOTTOM OF THE TRENCH. BACKFILL THE TRENCH AND TAMP THE SOIL. STEEPER SLOPES REQUIRE AN INTERCEPT TRENCH.
- JOIN SECTIONS AS SHOWN ABOVE.



### NOTES:

- CONCRETE WASHOUT AREA TO BE INSTALLED PRIOR TO CONCRETE PLACEMENT ON SITE. CONCRETE WASHOUT AREA TO BE ENTIRELY SELF CONTAINED.
- HAY BALES SHALL BE PROVIDED AROUND THE PERIMETER OF CONCRETE WASHOUT AREA FOR CONTAINMENT.
- WASHOUT AREA SHALL BE LINED WITH PLASTIC SHEETING NO THINNER THAN 10 MILS. SHEETING SHALL HAVE NO HOLES OR TEARS AND SHALL BE ANCHORED BY SAND BAGS ON ALL SIDES EXCEPT ACCESS SIDE. PLASTIC LINING TO BE REPLACED WITH EACH CLEANING.
- SIGNS SHALL BE PROVIDED AT THE CONSTRUCTION ENTRANCE AND CONCRETE AREAS INDICATING LOCATION OF WASHOUT AREA.
- WASHOUT AREA TO BE ENCLOSED IN CONSTRUCTION FENCE.
- WASHOUT AREAS TO BE INSPECTED DAILY TO ENSURE LINER IS INTACT AND ADEQUATE CAPACITY IS AVAILABLE AT ALL TIMES. WASHOUT AREAS SHALL BE INSPECTED IMMEDIATELY AFTER HEAVY RAINS, DAMAGED OR LEAKING WASHOUT AREAS TO BE DEACTIVATED AND REPAIRED IMMEDIATELY.
- CONCRETE WASTE SHALL BE REMOVED AND DISPOSED OF ONCE IT REACHES THREE-QUARTERS OF THE WASHOUT AREA'S HEIGHT. ALL WASTE SHALL BE DISPOSED OF IN A MANNER CONSISTENT WITH APPLICABLE LAWS, REGULATIONS, AND GUIDELINES OF MUNICIPALITY.
- PREFABRICATED CONCRETE WASHOUT CONTAINERS MAY BE UTILIZED ONLY WITH PRIOR APPROVAL FROM THE CITY'S ENGINEERING DEPARTMENT.

### CONCRETE WASHOUT AREA

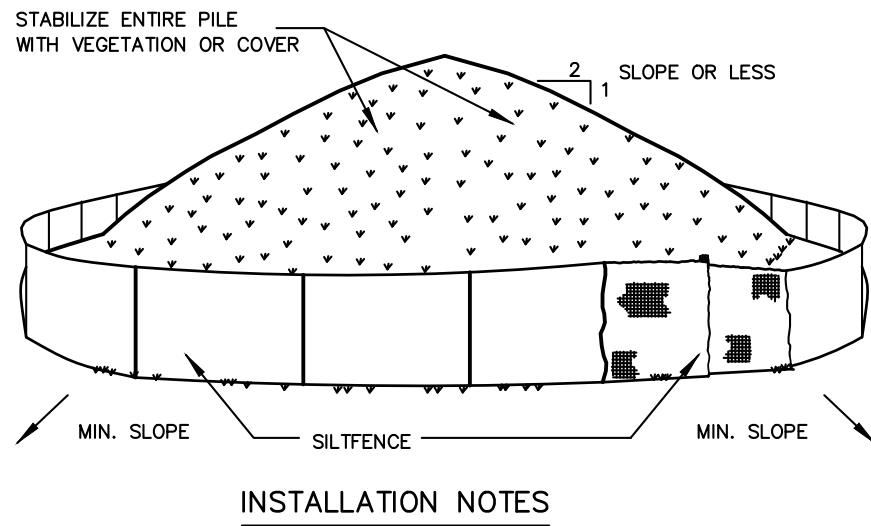


- NOTE:**
- EXPANSION JOINTS TO BE INSTALLED EVERY 10 FEET.

### CONCRETE CURB

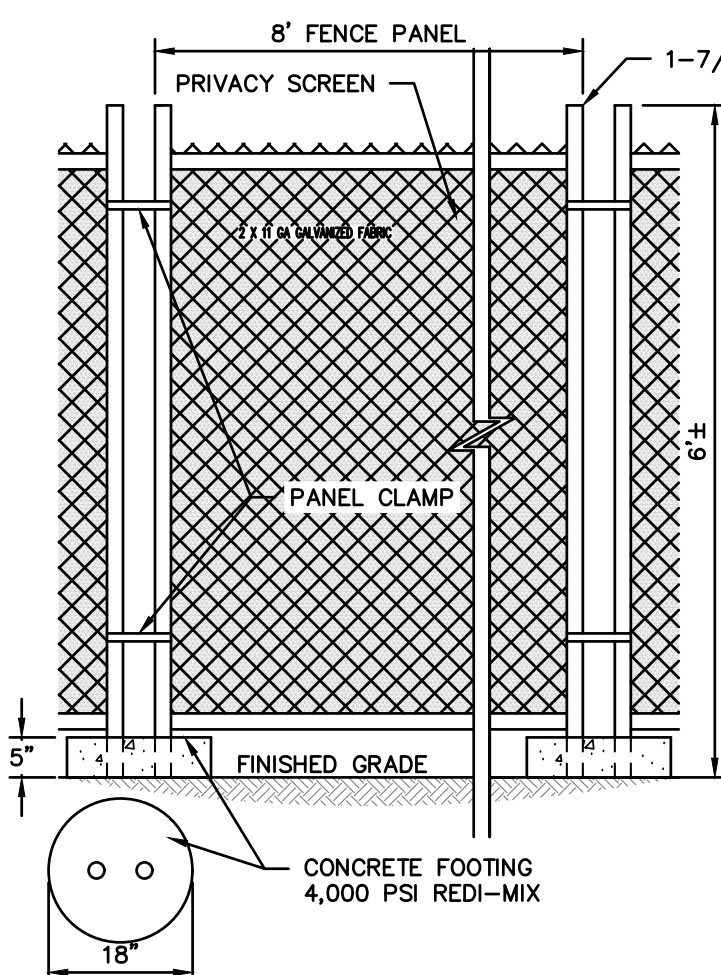
- GRATES/SOLID COVER SHALL BE DUCTILE IRON PER ASTM A536 GRADE 70-50-05.
- FRAMES SHALL BE DUCTILE IRON PER ASTM A536 GRADE 70-50-05.
- DRAIN BASIN TO BE CUSTOM MANUFACTURED ACCORDING TO PLAN DETAILS. RISERS ARE NEEDED FOR BASINS OVER 64" DUE TO SHIPPING RESTRICTIONS. SEE DRAWING NO. 7001-110-065.
- DRAINAGE CONNECTION STUB JOINT TIGHTNESS SHALL CONFORM TO ASTM D3212 FOR CORRUGATED HDPE (ADS & HANCOR DUAL WALL) & SDR 35 PVC.
- ADAPTERS CAN BE MOUNTED ON ANY ANGLE 0° TO 360°. TO DETERMINE MINIMUM ANGLE BETWEEN ADAPTERS SEE DRAWING NO. 7001-110-013.

### Soil Stockpiling



### INSTALLATION NOTES

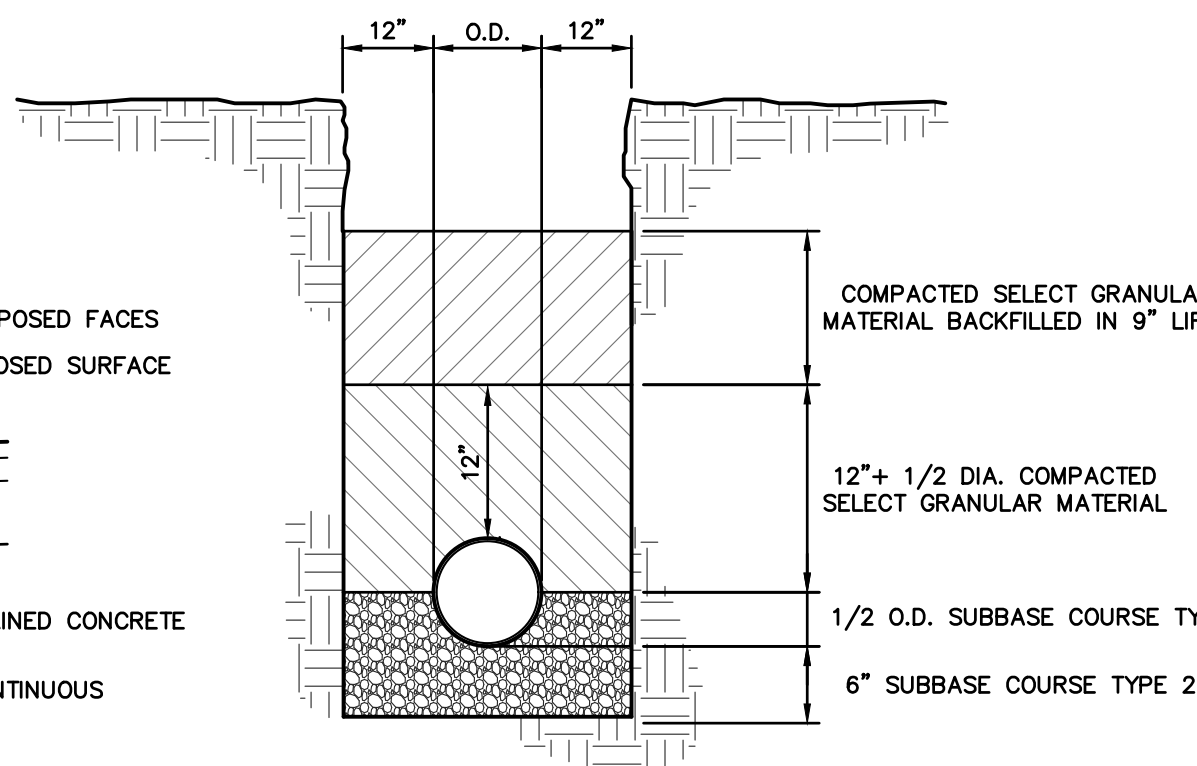
- INSTALLATION NOTES:**
- AREA CHOSEN FOR STOCKPILING OPERATIONS SHALL BE DRY AND STABLE.
  - SOILS OR FILL TO BE STOCKPILED ON SITE DURING CUTTING AND FILLING ACTIVITIES SHOULD BE LOCATED ON LEVEL PORTIONS OF THE SITE WITH A MINIMUM OF 50-75 FOOT SETBACKS FROM TEMPORARY DRAINAGE SWALES.
  - UPON COMPLETION OF SOIL STOCKPILING, EACH PILE SHALL BE SURROUNDED WITH EITHER SILT FENCING OR STRAWBALES, THEN STABILIZED WITH VEGETATION OR COVERED.
  - STOCKPILES REMAINING IN PLACE FOR MORE THAN A WEEK SHOULD BE SEEDED AND MULCHED OR COVERED WITH GEOTEXTILE FABRIC SURROUNDED BY SILT FENCE.
  - SEE SPECIFICATIONS (THIS MANUAL) FOR INSTALLATION OF SILT FENCE.



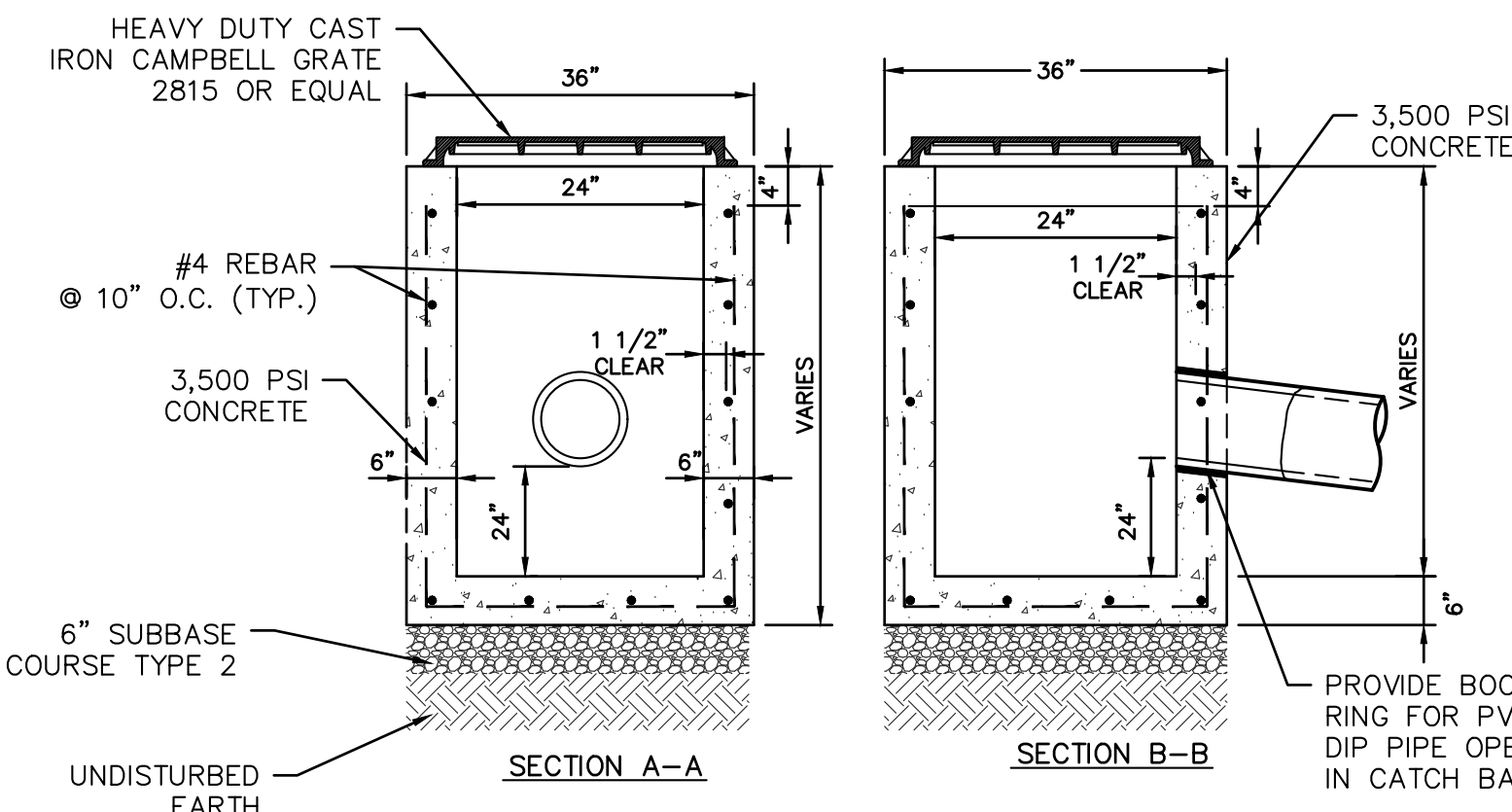
### NOTES:

- CONTRACTOR SHALL PROVIDE PERIODIC INSPECTION AND MAINTENANCE OF FENCE INCLUDING REPAIRS AS NECESSARY AND REQUIRED.
- CONTRACTOR SHALL INSTALL GREEN PRIVACY SCREENING FABRIC OR APPROVED EQUAL AROUND THE PERIMETER OF THE TEMPORARY CONSTRUCTION FENCING.
- PRIOR TO CONSTRUCTION THE CONTRACTOR SHALL SUBMIT SHOP DRAWINGS AND SAMPLES OF THE PRIVACY SCREENING TO THE ENGINEER FOR REVIEW AND APPROVAL.
- NO PORTION OF THE FENCE SHALL EXCEED 6-FEET IN HEIGHT

### TEMPORARY CHAIN LINK CONSTRUCTION FENCE



### TRENCH BEDDING



### PRECAST DRAIN INLET

- NOTES:**
- CONCRETE - 3,500 PSI MINIMUM STRENGTH @ 28 DAYS
  - STEEL REINFORCEMENT - ASTM A-615, # 4 REBAR, GRADE 60
  - COVER TO STEEL - 1 1/2" MINIMUM
  - DESIGN LOADING - AASHTO HS20-44
  - EARTH COVER - 0 TO 5 FEET
  - CONSTRUCTION JOINT - LAPPED

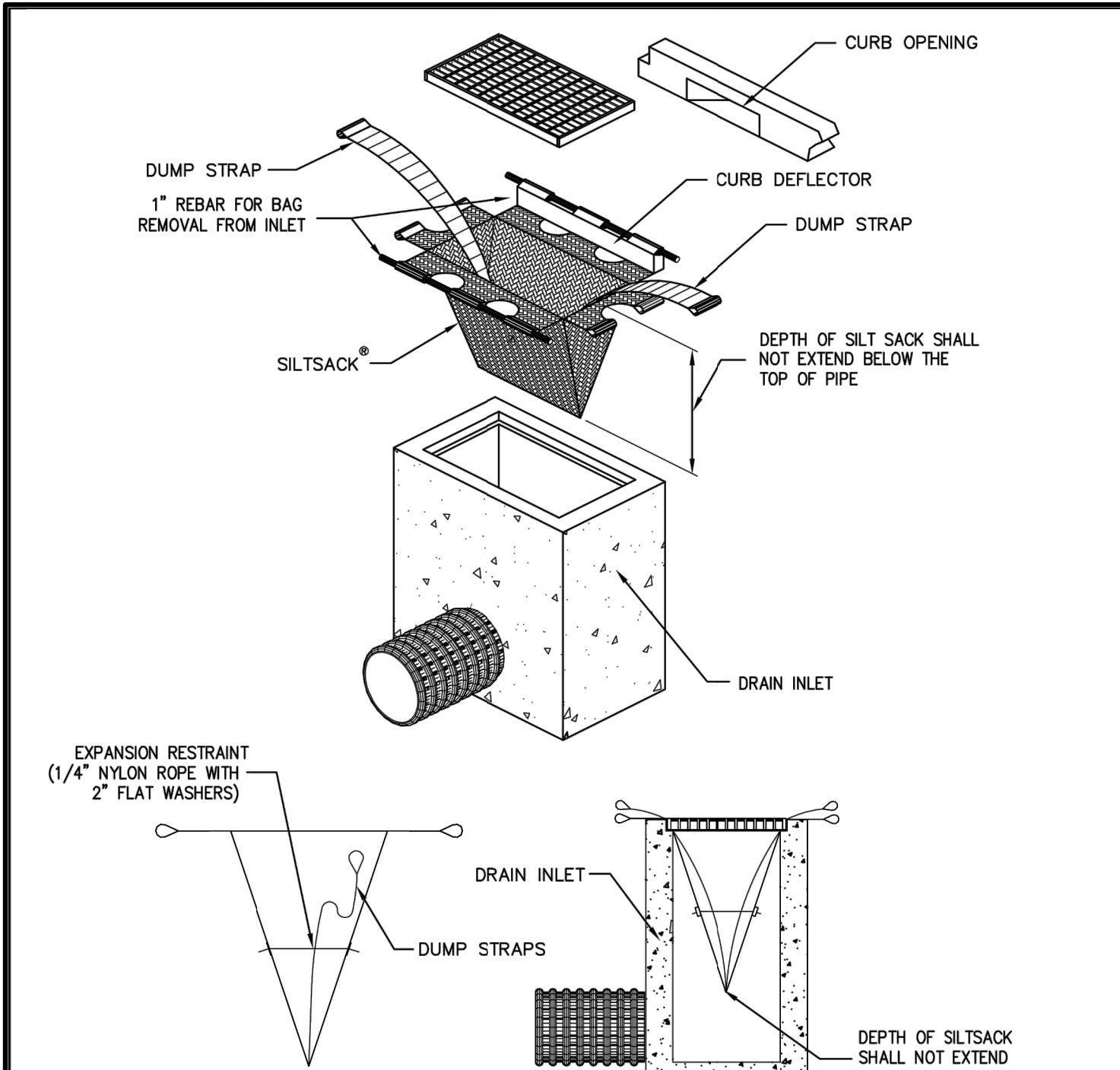
ANY ALTERATIONS OR REVISIONS OF THESE PLANS, UNLESS DONE BY OR UNDER THE DIRECTION OF THE NYS LICENSED AND REGISTERED ENGINEER THAT PREPARED THEM, IS A VIOLATION OF THE NYS EDUCATION LAW.

PROJECT:		PROPOSED RESIDENTIAL DEVELOPMENT 129-133 PROSPECT AVENUE VILLAGE OF MAMARONECK WESTCHESTER COUNTY - NEW YORK	
DETAILS		 HUDSON ENGINEERING & CONSULTING, P.C. 45 Knollwood Road, Suite 201 Elmsford, New York 10523 T: 914-909-0420 F: 914-560-2086 © 2022	
THIS PLAN NOT VALID FOR CONSTRUCTION WITHOUT ENGINEER'S SEAL & SIGNATURE		Date: 06/15/22 Sheet: 4 Scale: 1" = 10' Designed By: T.K. Checked By: M.S. Sheet No. 5	



C-3

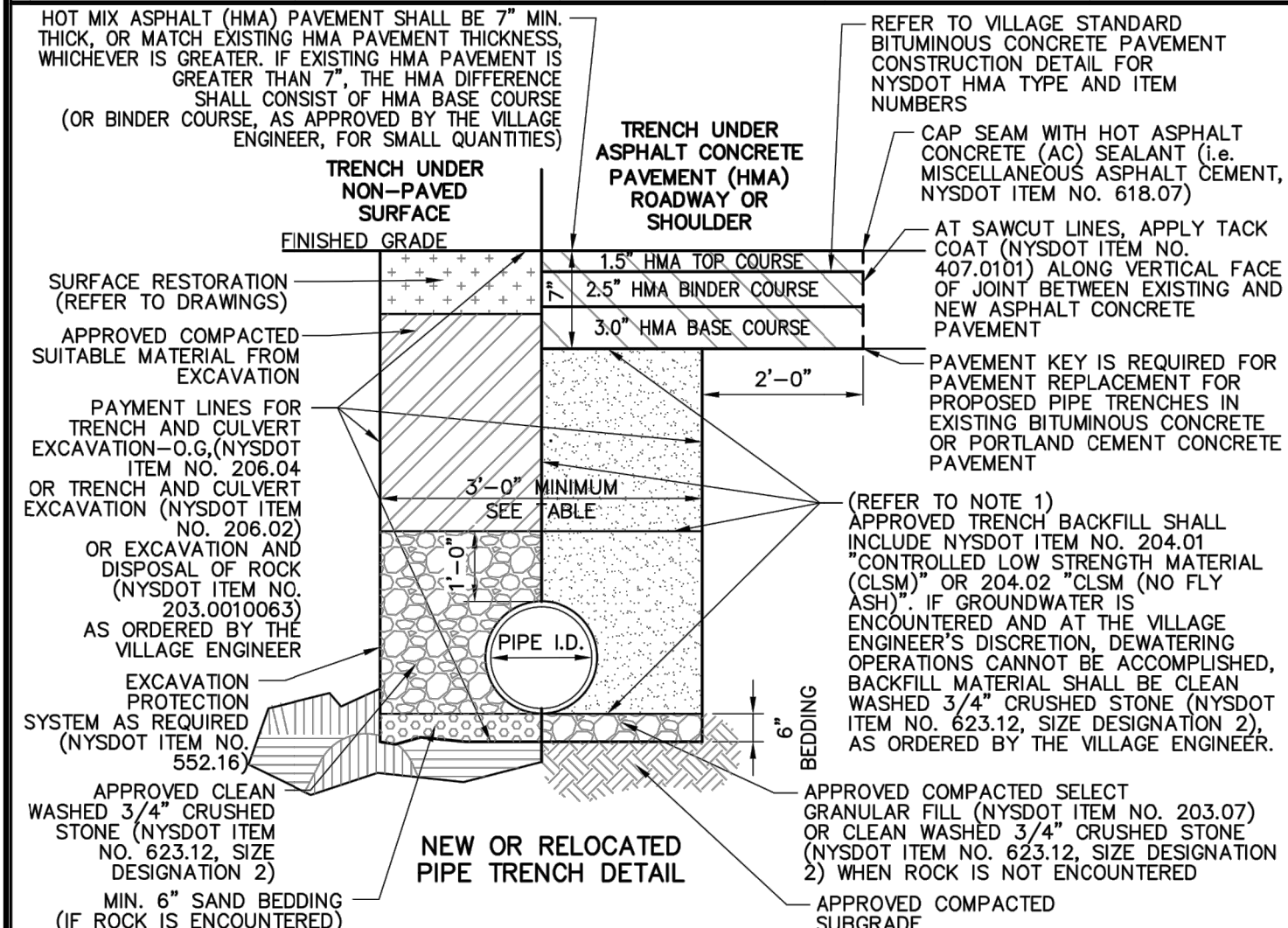




**BAG DETAIL**  
HI-FLOW SILTSACK AS MANUFACTURED BY ACF ENVIRONMENTAL OR APPROVED EQUAL®  
(FOR AREAS OF MODERATE TO HEAVY PRECIPITATION AND RUN-OFF)

PROPERTIES	TEST METHOD	UNITS	NOTES:
GRAB TENSILE STRENGTH	ASTM D-4632	265 LBS	
GRAB TENSILE ELONGATION	ASTM D-4632	20 %	
PUNCTURE	ASTM D-4833	135 LBS	
MULLEN BURST	ASTM D-3786	420 PSI	
TRAPZOID TEAR	ASTM D-4533	45 LBS	
UV RESISTANCE	ASTM D-4355	90 %	
APPARENT OPENING SIZE	ASTM D-4751	20 US SIEVE	
FLOW RATE	ASTM D-4491	200 GAL/MIN/50 FT	
PERMITTIVITY	ASTM D-4491	1.5 SEC -1	

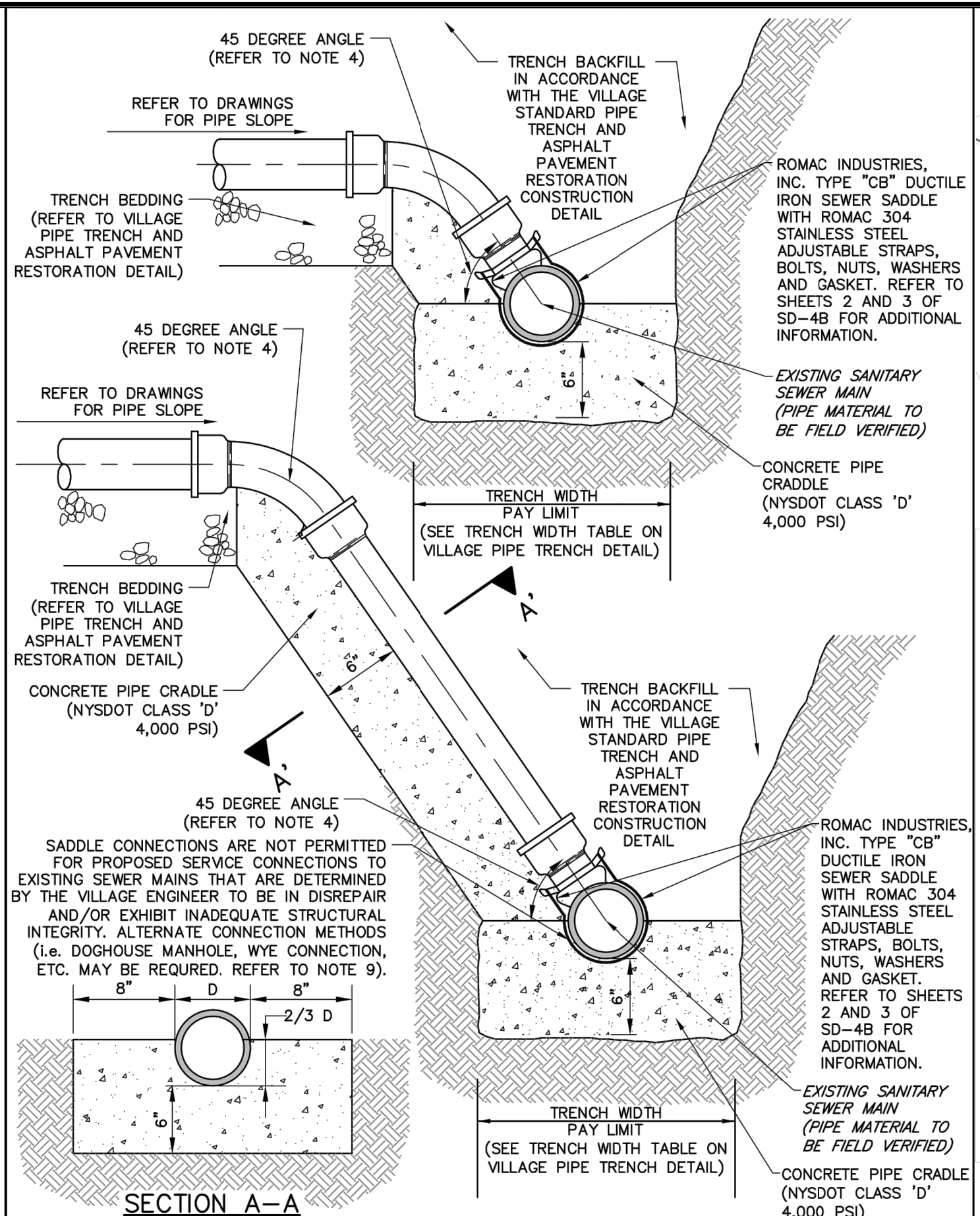
<b>VILLAGE OF MAMARONECK</b> STANDARD CONSTRUCTION DETAILS PREPARED IN THE OFFICE OF THE VILLAGE ENGINEER DESIGNED BY: ARS, PE DRAWN BY: ARS, PE Village of Mamaroneck, NY 10543 Phone: (914) 777-7731 Fax: (914) 777-7732	<b>CURB INLET PROTECTION (WITHIN RIGHT-OF-WAY AND/OR EXISTING PAVEMENT)</b> DESIGNED BY: ARS, PE CHECKED BY: ARS, PE Village of Mamaroneck, NY 10543 Phone: (914) 777-7731 Fax: (914) 777-7732	<b>VILLAGE OF MAMARONECK</b> PROJECT DETAILS SCALE: 1" = 10' DATE: 03/15/2014 VILLAGE MUNICIPAL BUILDING 169 MT. PLEASANT AVENUE (3RD FLOOR) WESTCHESTER COUNTY VILLAGE OF MAMARONECK, NY 10543 PHONE: (914) 777-7731 FAX: (914) 777-7732
---	---	--



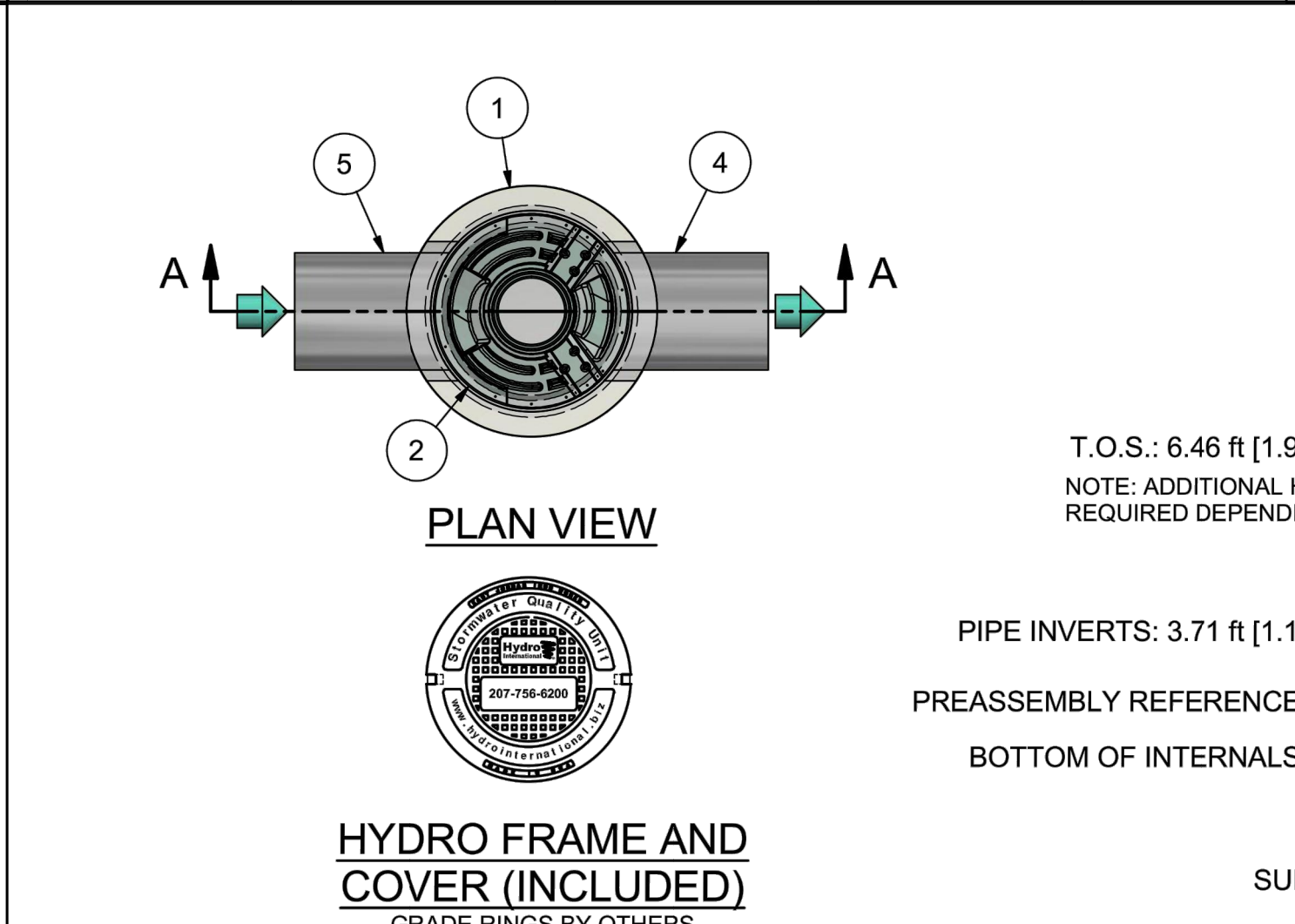
**EXCAVATION PAYMENT WIDTHS**

PIPE INSIDE DIAMETER (I.D.)	TRENCH WIDTH
3	3'-0"
4	3'-0"
6	3'-0"
8	3'-0"
10	3'-0"
12	3'-0"
14	3'-6"
16	3'-6"
18	3'-6"
20	4'-0"
24	4'-0"
30	4'-6"
36	5'-0"
42	5'-6"
48	6'-0"
54	6'-6"
60	7'-0"
64	7'-6"

<b>VILLAGE OF MAMARONECK</b> STANDARD CONSTRUCTION DETAILS PREPARED IN THE OFFICE OF THE VILLAGE ENGINEER DESIGNED BY: ARS, PE DRAWN BY: ARS, PE Village of Mamaroneck, NY 10543 Phone: (914) 777-7731 Fax: (914) 777-7732	<b>PIPE TRENCH AND ASPHALT CONCRETE PAVEMENT RESTORATION</b> DESIGNED BY: ARS, PE CHECKED BY: ARS, PE Village of Mamaroneck, NY 10543 Phone: (914) 777-7731 Fax: (914) 777-7732	<b>VILLAGE OF MAMARONECK</b> PROJECT DETAILS SCALE: 1" = 10' DATE: 03/15/2014 VILLAGE MUNICIPAL BUILDING 169 MT. PLEASANT AVENUE (3RD FLOOR) WESTCHESTER COUNTY VILLAGE OF MAMARONECK, NY 10543 PHONE: (914) 777-7731 FAX: (914) 777-7732
---	--	--



<b>VILLAGE OF MAMARONECK</b> STANDARD CONSTRUCTION DETAILS PREPARED IN THE OFFICE OF THE VILLAGE ENGINEER DESIGNED BY: ARS, PE DRAWN BY: ARS, PE Village of Mamaroneck, NY 10543 Phone: (914) 777-7731 Fax: (914) 777-7732	<b>SANITARY SEWER LATERAL SADDLE CONNECTION (TO EXISTING MAINS EXCLUDING CLAY)</b> DESIGNED BY: ARS, PE CHECKED BY: ARS, PE Village of Mamaroneck, NY 10543 Phone: (914) 777-7731 Fax: (914) 777-7732	<b>VILLAGE OF MAMARONECK</b> PROJECT DETAILS SCALE: 1" = 10' DATE: 03/15/2014 VILLAGE MUNICIPAL BUILDING 169 MT. PLEASANT AVENUE (3RD FLOOR) WESTCHESTER COUNTY VILLAGE OF MAMARONECK, NY 10543 PHONE: (914) 777-7731 FAX: (914) 777-7732
---	--	--

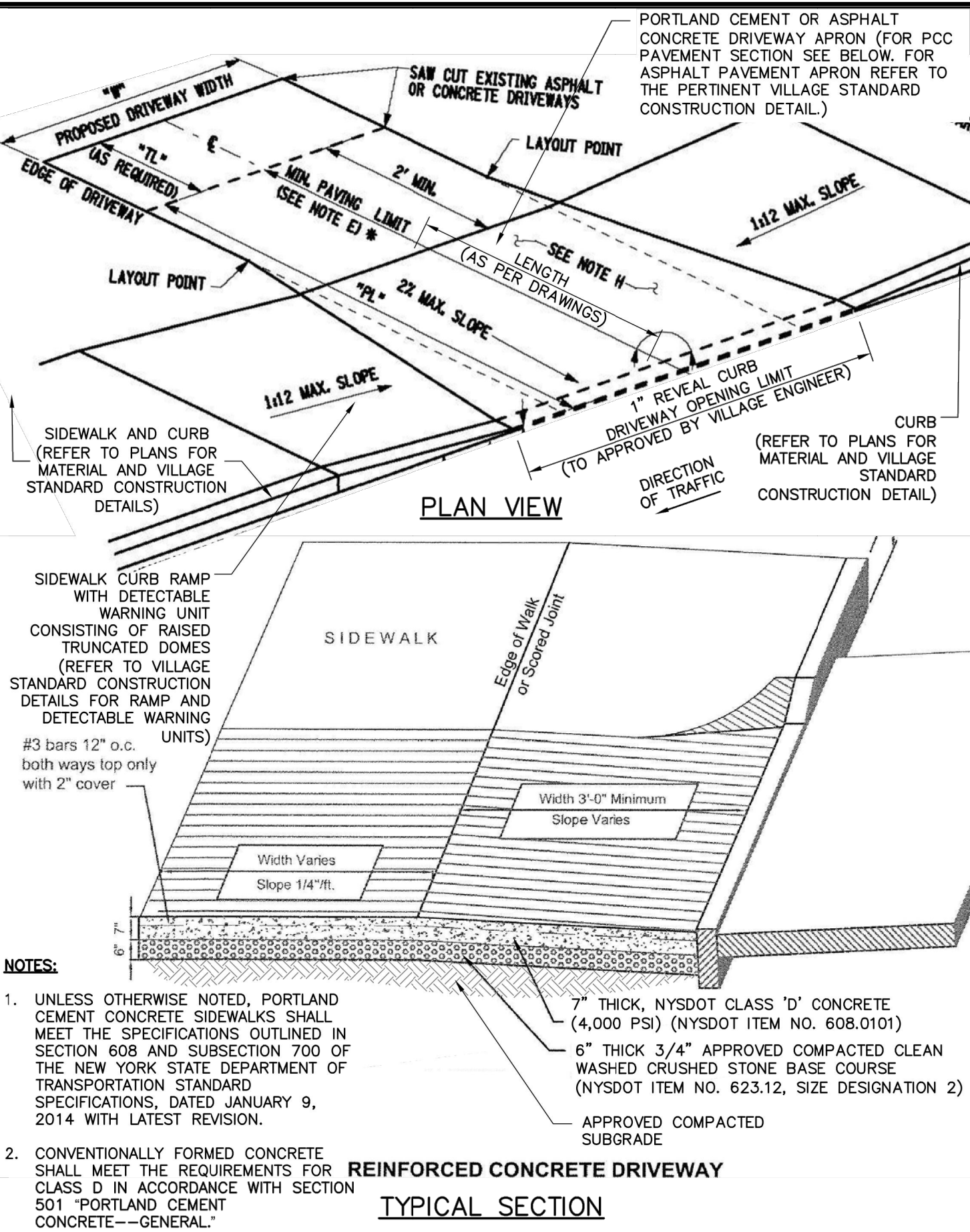


**PRODUCT SPECIFICATION:**

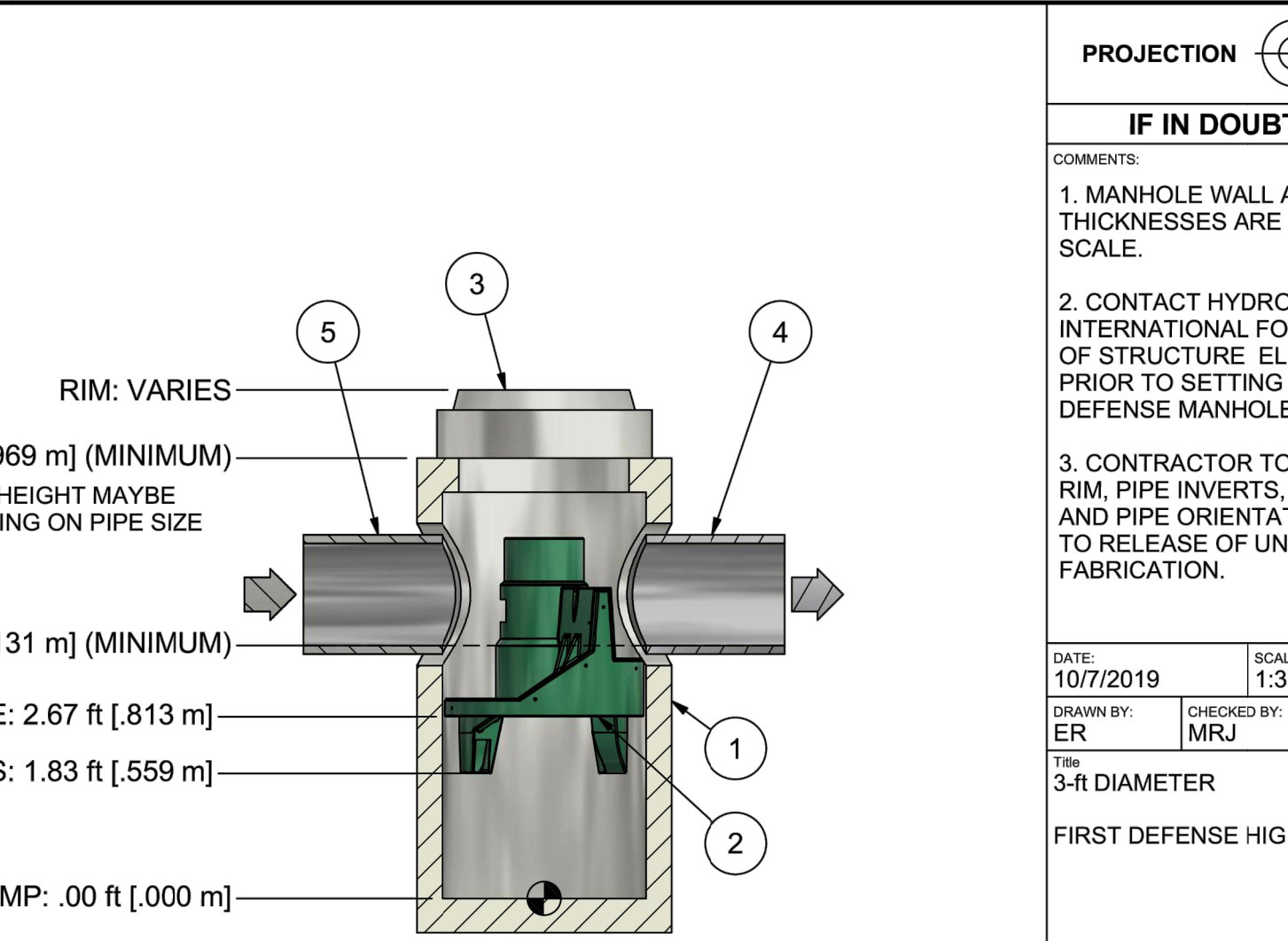
1. PEAK HYDRAULIC FLOW: 15.0 cfs (424 l/s)
2. MIN SEDIMENT STORAGE CAPACITY: 0.4 cu. yd. (0.3 cu. m.)
3. OIL STORAGE CAPACITY: 125 gal. (473 liters)
4. MAXIMUM INLET/OUTLET PIPE DIAMETERS: 18 in. (450 mm)
5. THE TREATMENT SYSTEM SHALL USE AN INDUCED VORTEX TO SEPARATE POLLUTANTS FROM STORMWATER RUNOFF.
6. NJCAT VERIFIED FOR GREATER THAN 85% TSS AT 1.06 cfs (29.9 l/s) FOR OK 110 (50-150 MICRONS)
7. NJCAT VERIFIED FOR GREATER THAN 90% TSS AT 0.85 cfs (24.0 l/s) FOR DOWN TO 50 MICRONS (50-1,000 MICRONS)

- GENERAL NOTES:**
1. General Arrangement drawings only. Contact Hydro International for site specific drawings.
  2. The diameter of the inlet and outlet pipes may be no more than 18".
  3. Multiple inlet pipes possible (refer to project plan).
  4. Inlet/outlet pipe angle can vary to align with drainage network (refer to project plan.s)
  5. Peak flow rate and minimum height limited by available cover and pipe diameter.
  6. Larger sediment storage capacity may be provided with a deeper sump depth.

ANY WARRANTY GIVEN BY HYDRO INTERNATIONAL WILL APPLY ONLY TO THOSE ITEMS SUPPLIED BY IT. ACCORDINGLY HYDRO INTERNATIONAL CANNOT ACCEPT ANY RESPONSIBILITY FOR ANY STRUCTURE, PLANT, OR EQUIPMENT, (OR THE PERFORMANCE THERE OF) DESIGNED, BUILT, MANUFACTURED, OR SUPPLIED BY ANY THIRD PARTY. HYDRO INTERNATIONAL HAVE A POLICY OF CONTINUOUS DEVELOPMENT AND RESERVE THE RIGHT TO AMEND THE SPECIFICATION. HYDRO INTERNATIONAL CANNOT ACCEPT LIABILITY FOR PERFORMANCE OF ITS EQUIPMENT, (OR ANY PART THEREOF), IF THE EQUIPMENT IS SUBJECT TO CONDITIONS OUTSIDE ANY DESIGN SPECIFICATION. HYDRO INTERNATIONAL OWNS THE COPYRIGHT OF THIS DRAWING, WHICH IS SUPPLIED IN CONFIDENCE. IT MUST NOT BE USED FOR ANY PURPOSE OTHER THAN THAT FOR WHICH IT IS SUPPLIED AND MUST NOT BE REPRODUCED, IN WHOLE OR IN PART, WITHOUT PRIOR PERMISSION IN WRITING FROM HYDRO INTERNATIONAL.



<b>VILLAGE OF MAMARONECK</b> STANDARD CONSTRUCTION DETAILS PREPARED IN THE OFFICE OF THE VILLAGE ENGINEER DESIGNED BY: ARS, PE DRAWN BY: ARS, PE Village of Mamaroneck, NY 10543 Phone: (914) 777-7731 Fax: (914) 777-7732	<b>PORTLAND CEMENT CONCRETE TAPERED DRIVEWAY APRON (SIDEWALK ABUTTING ROADWAY)</b> DESIGNED BY: ARS, PE CHECKED BY: ARS, PE Village of Mamaroneck, NY 10543 Phone: (914) 777-7731 Fax: (914) 777-7732	<b>VILLAGE OF MAMARONECK</b> PROJECT DETAILS SCALE: 1" = 10' DATE: 03/15/2014 VILLAGE MUNICIPAL BUILDING 169 MT. PLEASANT AVENUE (3RD FLOOR) WESTCHESTER COUNTY VILLAGE OF MAMARONECK, NY 10543 PHONE: (914) 777-7731 FAX: (914) 777-7732
---	--	--

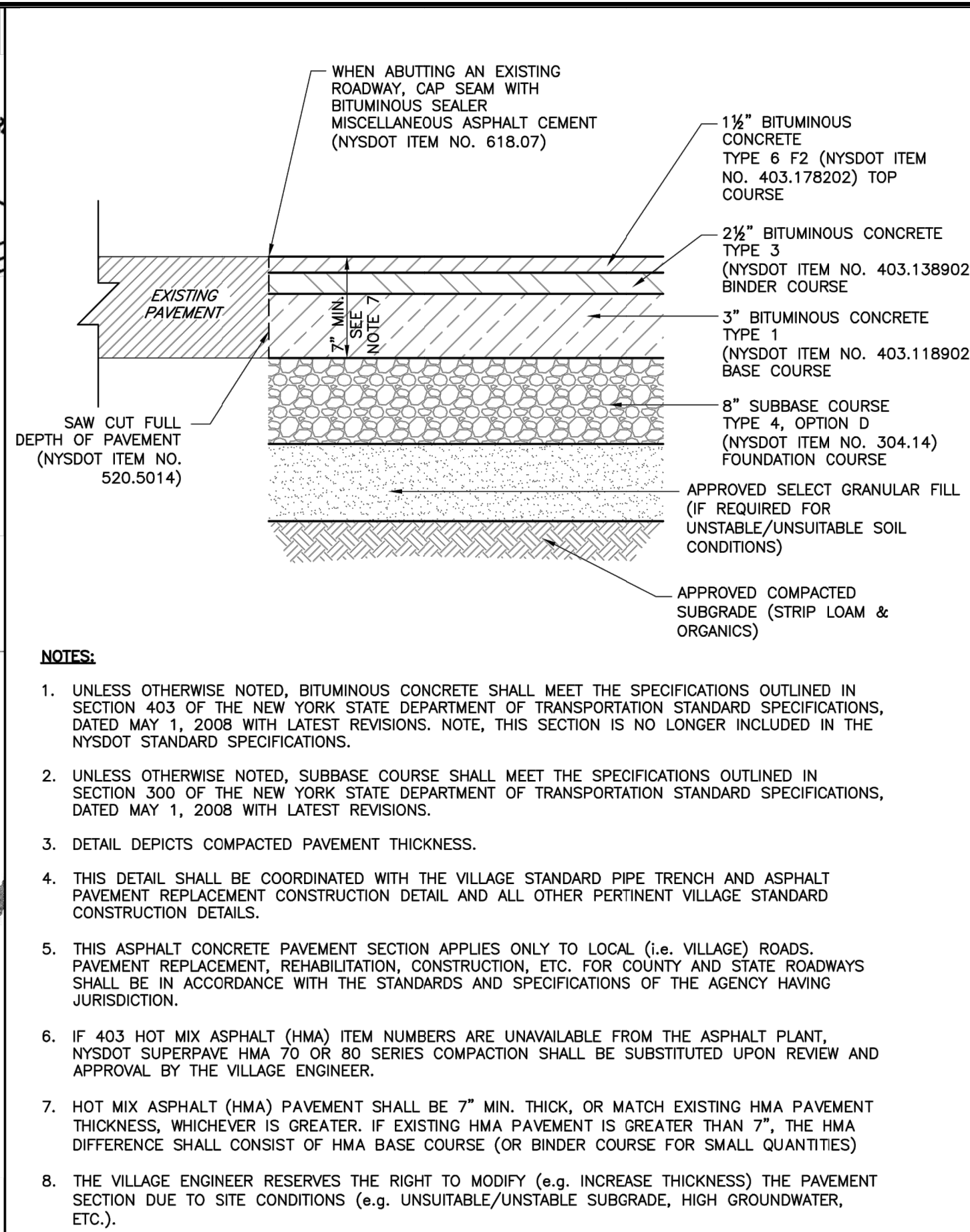


**GENERAL ARRANGEMENT**

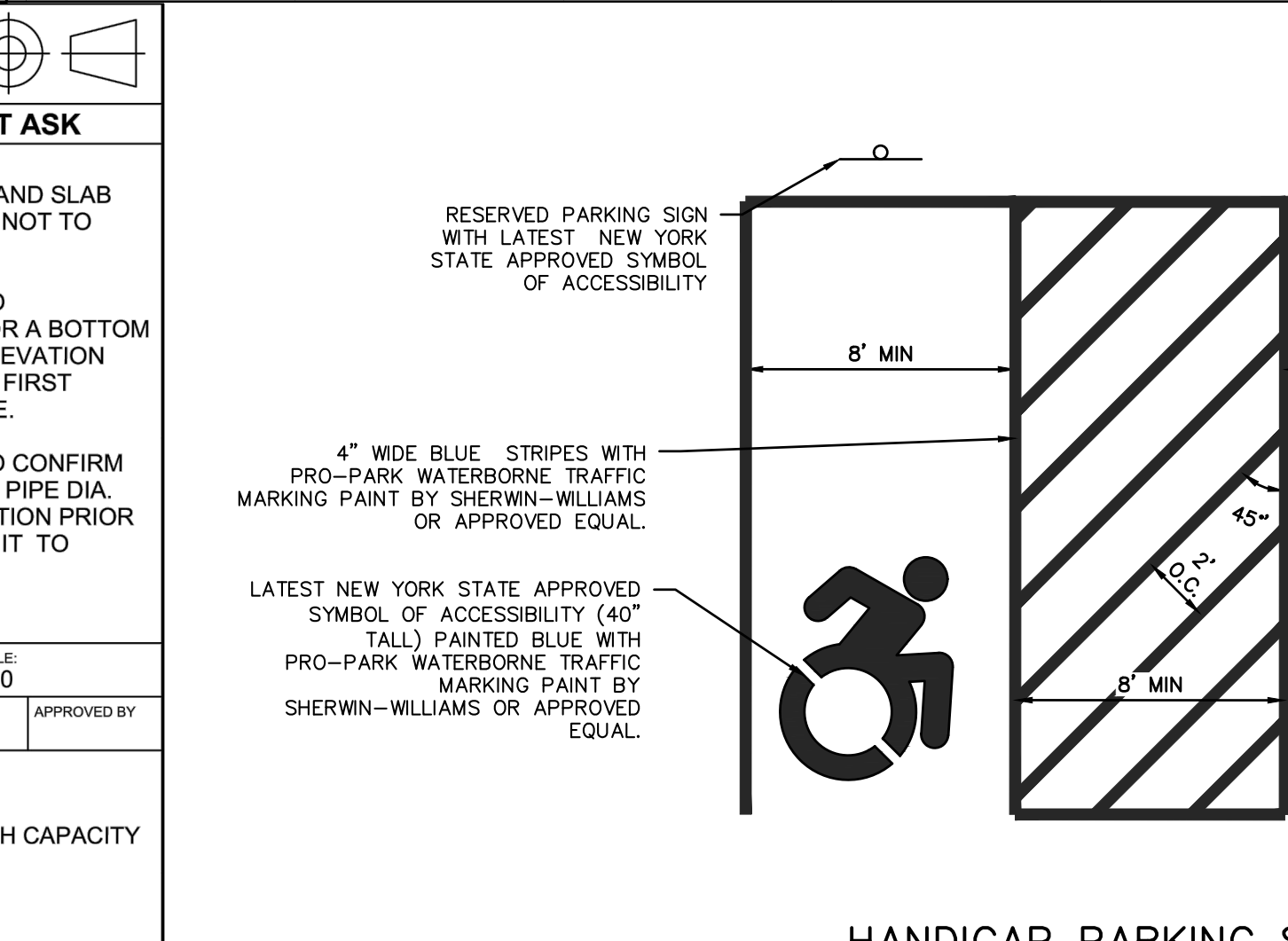
**Hydro International**  
hydro-int.com  
HYDRO INTERNATIONAL

**PARTS LIST**

ITEM	QTY	SIZE (in)	SIZE (mm)	DESCRIPTION
1	1	36	900	I.D. PRECAST MANHOLE
2	1			INTERNAL COMPONENTS (PRE-INSTALLED)
3	1	30	750	FRAME AND COVER (ROUND)
4	1	18 (MAX)	450 (MAX)	OUTLET PIPE (BY OTHERS)
5	1	18 (MAX)	450 (MAX)	INLET PIPE (BY OTHERS)



<b>VILLAGE OF MAMARONECK</b> STANDARD CONSTRUCTION DETAILS PREPARED IN THE OFFICE OF THE VILLAGE ENGINEER DESIGNED BY: ARS, PE DRAWN BY: ARS, PE Village of Mamaroneck, NY 10543 Phone: (914) 777-7731 Fax: (914) 777-7732	<b>ASPHALT CONCRETE PAVEMENT (WITHIN RIGHT-OF-WAY)</b> DESIGNED BY: ARS, PE CHECKED BY: ARS, PE Village of Mamaroneck, NY 10543 Phone: (914) 777-7731 Fax: (914) 777-7732	<b>VILLAGE OF MAMARONECK</b> PROJECT DETAILS SCALE: 1" = 10' DATE: 03/15/2014 VILLAGE MUNICIPAL BUILDING 169 MT. PLEASANT AVENUE (3RD FLOOR) WESTCHESTER COUNTY VILLAGE OF MAMARONECK, NY 10543 PHONE: (914) 777-7731 FAX: (914) 777-7732
---	--	--



**NOTES:**

1. PARKING SPACES AND ACCESS AISLES SHALL BE LEVEL WITH SURFACE. SLOPES NOT EXCEEDING 1:50 (2%) IN ANY DIRECTION.
2. HANDICAPPED STALLS SHALL BE DESIGNATED AS RESERVED BY A SIGN. THE SIGN SHALL BE SET A MINIMUM OF 84" ABOVE GRADE AND NOT BE OBSCURED BY A VEHICLE WHEN PARKED.

**PROJECT:**  
PROPOSED RESIDENTIAL DEVELOPMENT  
129-133 PROSPECT AVENUE  
VILLAGE OF MAMARONECK  
WESTCHESTER COUNTY - NEW YORK

**DETAILS**

**HUDSON ENGINEERING CONSULTING, P.C.**  
45 Knollwood Road, Suite 201  
Elmsford, New York 10523  
T: 914-909-0420  
F: 914-560-2086  
© 2022

ANY ALTERATIONS OR REVISIONS OF THESE PLANS, UNLESS DONE BY OR UNDER THE DIRECTION OF THE NYS LICENSED AND REGISTERED ENGINEER THAT PREPARED THEM, IS A VIOLATION OF THE NYS EDUCATION LAW.



Date: 06/15/22 Sheet: 5  
Scale: 1" = 10'  
Designed By: T.K.  
Checked By: M.S.  
Sheet No.

C-4