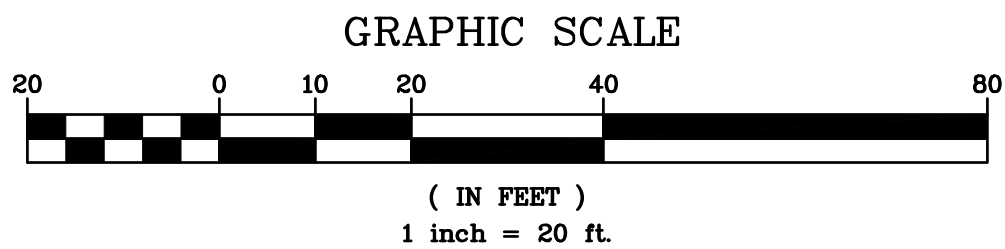
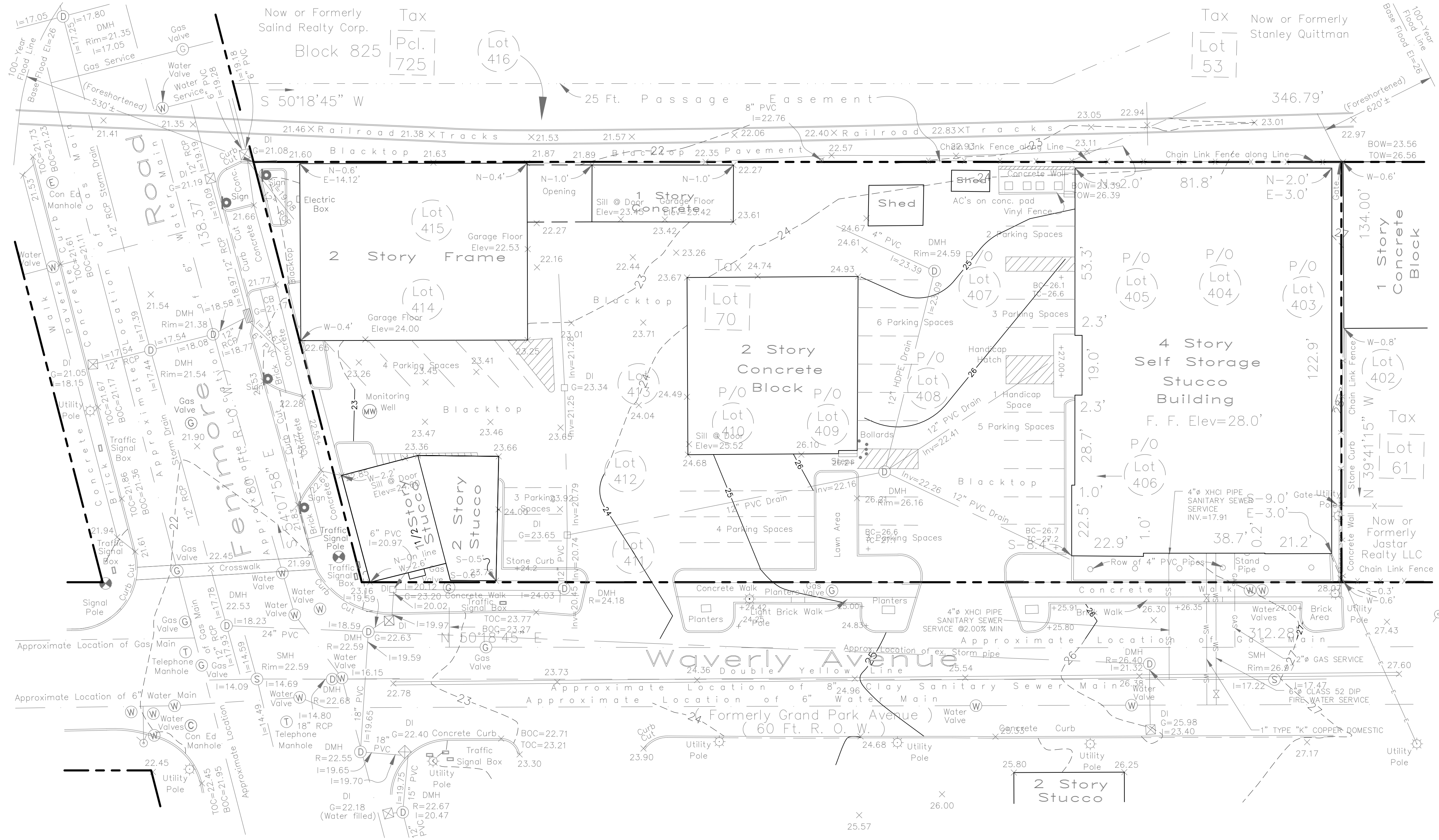


SITE LOCATION MAP  
(SCALE: 1"=200')



ANY ALTERATIONS OR REVISIONS OF THESE PLANS, UNLESS DONE BY OR UNDER THE DIRECTION OF THE NYS LICENSED AND REGISTERED ENGINEER THAT PREPARED THEM, IS A VIOLATION OF THE NYS EDUCATION LAW.

2	REVISIONS FOR MEETING WITH TOWN STAFF	1-14-19
	REVISED FOR COMMENTS	1-14-19
3	REVISED FOR COMMENTS	1-14-19
4	REVISED FOR COMMENTS	1-14-19
5	REVISED FOR COMMENTS	1-14-19
6	REVISED FOR COMMENTS	1-14-19
7	REVISED FOR COMMENTS	1-14-19
8	REVISED FOR COMMENTS	1-14-19
9	REVISED FOR COMMENTS	1-14-19
10	REVISED FOR COMMENTS	1-14-19
11	REVISED FOR COMMENTS	1-14-19
12	REVISED FOR COMMENTS	1-14-19
13	REVISED FOR COMMENTS	1-14-19
14	REVISED FOR COMMENTS	1-14-19
15	REVISED FOR COMMENTS	1-14-19
16	REVISED FOR COMMENTS	1-14-19
17	REVISED FOR COMMENTS	1-14-19
18	REVISED FOR COMMENTS	1-14-19
19	REVISED FOR COMMENTS	1-14-19
20	REVISED FOR COMMENTS	1-14-19
21	REVISED FOR COMMENTS	1-14-19
22	REVISED FOR COMMENTS	1-14-19
23	REVISED FOR COMMENTS	1-14-19
24	REVISED FOR COMMENTS	1-14-19
25	REVISED FOR COMMENTS	1-14-19
26	REVISED FOR COMMENTS	1-14-19
27	REVISED FOR COMMENTS	1-14-19
28	REVISED FOR COMMENTS	1-14-19
29	REVISED FOR COMMENTS	1-14-19
30	REVISED FOR COMMENTS	1-14-19
31	REVISED FOR COMMENTS	1-14-19
32	REVISED FOR COMMENTS	1-14-19
33	REVISED FOR COMMENTS	1-14-19
34	REVISED FOR COMMENTS	1-14-19
35	REVISED FOR COMMENTS	1-14-19
36	REVISED FOR COMMENTS	1-14-19
37	REVISED FOR COMMENTS	1-14-19
38	REVISED FOR COMMENTS	1-14-19
39	REVISED FOR COMMENTS	1-14-19
40	REVISED FOR COMMENTS	1-14-19
41	REVISED FOR COMMENTS	1-14-19
42	REVISED FOR COMMENTS	1-14-19
43	REVISED FOR COMMENTS	1-14-19
44	REVISED FOR COMMENTS	1-14-19
45	REVISED FOR COMMENTS	1-14-19
46	REVISED FOR COMMENTS	1-14-19
47	REVISED FOR COMMENTS	1-14-19
48	REVISED FOR COMMENTS	1-14-19
49	REVISED FOR COMMENTS	1-14-19
50	REVISED FOR COMMENTS	1-14-19
51	REVISED FOR COMMENTS	1-14-19
52	REVISED FOR COMMENTS	1-14-19
53	REVISED FOR COMMENTS	1-14-19
54	REVISED FOR COMMENTS	1-14-19
55	REVISED FOR COMMENTS	1-14-19
56	REVISED FOR COMMENTS	1-14-19
57	REVISED FOR COMMENTS	1-14-19
58	REVISED FOR COMMENTS	1-14-19
59	REVISED FOR COMMENTS	1-14-19
60	REVISED FOR COMMENTS	1-14-19
61	REVISED FOR COMMENTS	1-14-19
62	REVISED FOR COMMENTS	1-14-19
63	REVISED FOR COMMENTS	1-14-19
64	REVISED FOR COMMENTS	1-14-19
65	REVISED FOR COMMENTS	1-14-19
66	REVISED FOR COMMENTS	1-14-19
67	REVISED FOR COMMENTS	1-14-19
68	REVISED FOR COMMENTS	1-14-19
69	REVISED FOR COMMENTS	1-14-19
70	REVISED FOR COMMENTS	1-14-19
71	REVISED FOR COMMENTS	1-14-19
72	REVISED FOR COMMENTS	1-14-19
73	REVISED FOR COMMENTS	1-14-19
74	REVISED FOR COMMENTS	1-14-19
75	REVISED FOR COMMENTS	1-14-19
76	REVISED FOR COMMENTS	1-14-19
77	REVISED FOR COMMENTS	1-14-19
78	REVISED FOR COMMENTS	1-14-19
79	REVISED FOR COMMENTS	1-14-19
80	REVISED FOR COMMENTS	1-14-19
81	REVISED FOR COMMENTS	1-14-19
82	REVISED FOR COMMENTS	1-14-19
83	REVISED FOR COMMENTS	1-14-19
84	REVISED FOR COMMENTS	1-14-19
85	REVISED FOR COMMENTS	1-14-19
86	REVISED FOR COMMENTS	1-14-19
87	REVISED FOR COMMENTS	1-14-19
88	REVISED FOR COMMENTS	1-14-19
89	REVISED FOR COMMENTS	1-14-19
90	REVISED FOR COMMENTS	1-14-19
91	REVISED FOR COMMENTS	1-14-19
92	REVISED FOR COMMENTS	1-14-19
93	REVISED FOR COMMENTS	1-14-19
94	REVISED FOR COMMENTS	1-14-19
95	REVISED FOR COMMENTS	1-14-19
96	REVISED FOR COMMENTS	1-14-19
97	REVISED FOR COMMENTS	1-14-19
98	REVISED FOR COMMENTS	1-14-19
99	REVISED FOR COMMENTS	1-14-19
100	REVISED FOR COMMENTS	1-14-19

THIS PLAN NOT VALID FOR CONSTRUCTION WITHOUT ENGINEERS SEAL & SIGNATURE

PROJECT: SELF STORAGE BUILDING ADDITION  
560 FENIMORE ROAD  
VILLAGE OF MAMARONECK  
WESTCHESTER COUNTY - NEW YORK

EXISTING CONDITIONS MAP

**HUDSON ENGINEERING & CONSULTING, P.C.**  
45 Knollwood Road - Suite 201  
Elmsford, New York 10523  
T: 914-909-0420  
F: 914-560-2086  
© 2018

**HEC**

**HUDSON ENGINEERING & CONSULTING, P.C.**

**C-1**

Date: 2/8/18 Sheet: 1  
Scale: 1" = 20'  
Designed By: D.C.  
Checked By: M.S.  
Sheet No. 7

STATE OF NEW YORK  
MICHAEL STERN  
LICENSED PROFESSIONAL ENGINEER  
No. 60651

1. THE ENGINEER SHALL NOT BE RESPONSIBLE FOR THE SUPERVISION OF THE CONSTRUCTION.
2. NO CHANGES SHALL BE MADE TO THESE PLANS EXCEPT AS PER NYS LAW CHAPTER 882.
3. ALL WORK AND MATERIALS SHALL COMPLY WITH ALL APPLICABLE CODES, INCLUDING BUT NOT LIMITED TO ACI, AISC, ZONING, AND THE NEW YORK STATE BUILDING CODE.
4. ALL CONDITIONS, LOCATIONS AND DIMENSIONS SHALL BE FIELD VERIFIED AND THE ENGINEER SHALL SIGN AND SEAL ALL CHANGES OF FIELD DIFFERENCES.
5. ALL CHANGES MADE TO THE PLANS SHALL BE APPROVED BY THE ENGINEER AND ANY SUCH CHANGES SHALL BE FILED AS AMENDMENTS TO THE ORIGINAL BUILDING PERMIT.
6. THE CONTRACTOR SHALL SUPERVISE AND DIRECT THE WORK USING HIS BEST SKILL AND ATTENTION. HE SHALL BE SOLELY RESPONSIBLE FOR ALL CONSTRUCTION MEANS, METHODS, TECHNIQUES, SEQUENCES AND PROCEDURES AND FOR THE PROTECTING ALL PORTIONS OF THE EXISTING WORK.
7. THE CONTRACTOR SHALL BE RESPONSIBLE TO THE OWNER FOR THE ACTS AND OMISSIONS OF HIS EMPLOYEES, SUBCONTRACTORS AND THEIR AGENTS AND INDEPENDENT CONTRACTORS AND OTHER PERSONS PERFORMING ANY OF THE WORK UNDER A CONTRACT WITH THE CONTRACTOR.
8. SAFETY DURING CONSTRUCTION SHALL BE THE RESPONSIBILITY OF THE CONTRACTOR AND THE CONTRACTOR SHALL CONFORM TO ALL LOCAL, STATE AND FEDERAL AGENCIES IN EFFECT DURING THE PERIOD OF CONSTRUCTION.
9. THE CONTRACTOR AND HIS SUBCONTRACTORS SHALL MAKE APPLICATION TO RECEIVE ALL NECESSARY PERMITS TO PERFORM THE WORK UNDER CONTRACT. THE WORK SHALL BE IN ACCORDANCE WITH ALL LOCAL, STATE AND FEDERAL AGENCIES AND ALL WORK AS REQUIRED BY THE LOCAL, COUNTY, AND STATE AGENCIES WHICH MAY HAVE JURISDICTION OVER THOSE TRADES, AND SHALL PRESENT THE OWNER WITH COPIES OF ALL PERMITS, LICENSES AND INSURANCE CERTIFICATES.
10. FINAL GRADING AROUND THE BUILDING AREA SHALL SLOPE AWAY FROM THE STRUCTURE.
11. ALL WRITTEN DIMENSIONS ON THE DRAWINGS SHALL TAKE PRECEDENCE OVER ANY SCALED DIMENSIONS.
12. ADJOINING PUBLIC AND PRIVATE PROPERTY SHALL BE PROTECTED FROM DAMAGE DURING CONSTRUCTION, REMODELING AND DEMOLITION WORK. PROTECTION MUST BE IN PLACE FOR FENCES, DRIVEWAYS, SIDEWALKS, DRIVEWAYS, DRIVEWAYS, DRIVEWAYS AND ROOFS. PROVISIONS SHALL BE MADE TO CONTROL WATER RUNOFF AND EROSION DURING CONSTRUCTION OR DEMOLITION ACTIVITIES. THE PERSON MARKING OR SETTING AN EXCAVATION SHALL BE RESPONSIBLE FOR NOTIFYING THE ADJOINING OWNERS OF ADJOINING BUILDINGS ADVISING THEM THAT THE EXCAVATION IS TO BE MADE AND THAT THE ADJOINING BUILDING SHOULD BE PROTECTED. SAID NOTIFICATION SHALL BE DELIVERED NOT LESS THAN 10 DAYS PRIOR TO THE STARTING DATE OF EXCAVATION.
13. OWNER SHALL INSURE THAT THE INSURANCE PROVIDED BY THE CONTRACTOR HIRED TO PERFORM THE WORK SHALL BE ENDORSED TO NAME HUDSON ENGINEERING & ARCHITECT, P.C. AS THE INSURANCE AGENT. THE CONTRACTOR SHALL ENDORSE, AND AFFILIATES, AS ADDITIONAL INSURED ON ALL POLICIES AND HOLD HARMLESS DOCUMENTS, AND SHALL STIPULATE THAT THIS INSURANCE IS PRIMARY, AND THAT THE CONTRACTOR'S INSURANCE SHALL NOT BE MAINTAINED BY HUDSON ENGINEERING & ARCHITECT, P.C. SHALL BE EXCESS ONLY AND SHALL NOT BE CALLED UPON TO CONTRIBUTE WITH THIS INSURANCE. ISO ADDITIONAL INSURED ENDORSEMENT FORM NUMBER C62010 1185 UNDER GL. COPIES OF THE INSURANCE POLICIES SHALL BE SUBMITTED TO AND APPROVED BY THE INSURANCE AGENT, PRIOR TO APPROVAL PRIOR TO THE SIGNING OF THE CONTRACT.
14. INDUSTRIAL CODE RULE 753: THE CONTRACTOR SHALL NOTIFY ALL UTILITY COMPANIES PRIOR TO ANY EXCAVATION. THE CONTRACTOR SHALL COMPLY WITH ALL THE LATEST INDUSTRIAL CODE RULE 753 REGULATIONS.

PROPERTY LINE

PROPOSED CONCRETE CURB

PROPOSED BITUMINOUS CONCRETE PAVEMENT

PROPOSED WALKWAY

PROPOSED CONTOUR 26

PROPOSED SPOT GRADE +26.25

PROPOSED STORM PIPE

PROPOSED DRAIN INLET

PROPOSED TRENCH DRAIN

PROPOSED LIMIT OF DISTURBANCE

1. ANY IMPORTED SOIL SHALL COMPLY WITH ALL FEDERAL, STATE, AND LOCAL REQUIREMENTS FOR QUALITY AND USE.
2. OFF-SITE DISPOSAL OF EXCESS CUT SHALL BE IN ACCORDANCE WITH ALL FEDERAL, STATE, AND LOCAL REQUIREMENTS.
3. THE APPLICANT SHALL PROVIDE AN AS-BUILT PLAN OF THE STORMWATER MANAGEMENT SYSTEM FOR ALL STORM FEATURES INCLUDING, BUT NOT LIMITED TO, LOCATIONS OF STORMWATER INFRASTRUCTURE, INVERT/RIM ELEVATIONS, PIPE LOCATIONS AND SIZES, FINAL GRADING, ETC.) CERTIFIED BY THE ENGINEER ON RECORD, PRIOR TO THE ISSUANCE OF THE CERTIFICATE OF OCCUPANCY. THE AS-BUILT PLAN SHALL ALSO BE SUBMITTED TO THE MAINTENANCE SCHEDULE FOR THE STORMWATER MANAGEMENT FEATURES.

1. EXISTING SANITARY SEWER SERVICES TO ALL BUILDINGS TO BE DEMOLISHED SHALL BE REMOVED, CUT AND AND CAPPED AT THE MAIN A WATERTIGHT JOINT SHALL BE USED TO CAP THE MAIN PER VILLAGE OF MAMARONECK STANDARDS.
2. EXISTING WATER SERVICES TO ALL BUILDINGS TO BE DEMOLISHED SHALL BE REMOVED, CUT AND CAPPED PER WESTCHESTER JOINT WATER WORKS REQUIREMENTS AND REGULATIONS.

	Cut	Fill	Net
Totals	69.31 Cu. Yd.	127.91 Cu. Yd.	58.59 Cu. Yd.<Fill

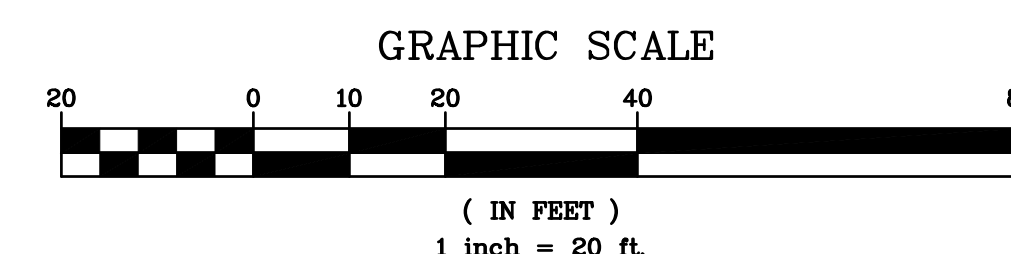
1-14-19	REVISED PER MEETING WITH TOWN STAFF	Date 9-27-18 Description No.	THIS PLAN NOT VALID FOR CONSTRUCTION WITHOUT ENGINEER'S SEAL & SIGNATURE	PROJECT:	SELF STORAGE BUILDING ADDITION 560 FENIMORE ROAD VILLAGE OF MAMARONECK WESTCHESTER COUNTY – NEW YORK	
2.	1.			STORMWATER MANAGEMENT PLAN		
<div><div>HEC</div><div><div>HUDSON</div><div>ENGINEERING</div><div>&amp;</div><div>CONSULTING, P.C.</div><div>45 Knollwood Road – Suite 201 Elmsford, New York 10523</div><div>T: 914-909-0420 F: 914-560-2086</div></div></div>						

Date: 2/8/18 Sheet: 2  
Scale: 1" = 20'  
Designed By: D.C.  
Checked By: M.S.

Sheet No.

C-2





ANY ALTERATIONS OR REVISIONS OF THESE PLANS, UNLESS DONE BY OR UNDER THE DIRECTION OF THE NYS LICENSED AND REGISTERED ENGINEER THAT PREPARED THEM, IS A VIOLATION OF THE NYS EDUCATION LAW.



INSTALLATION & MAINTENANCE OF EROSION CONTROL:

CONSTRUCTION SCHEDULE  
NOTIFY APPROPRIATE MUNICIPAL AGENCY HAVING JURISDICTION AT LEAST 5 DAYS PRIOR TO START.

EROSION CONTROL MEASURES  
INSTALL ALL EROSION CONTROL MEASURES PRIOR TO START OF CONSTRUCTION.  
CALL FOR INSPECTION FROM THE APPROPRIATE MUNICIPAL AGENCY HAVING JURISDICTION AT LEAST 2 DAYS PRIOR TO INSTALLATION.

INSPECTION BY MUNICIPALITY  
MAINTENANCE (TO BE PERFORMED DURING ALL PHASES OF CONSTRUCTION)

AFTER ANY RAIN CAUSING RUNOFF, CONTRACTOR TO INSPECT HAYBALES, ETC. AND REMOVE ANY EXCESSIVE SEDIMENT AND INSPECT STOCKPILES AND CORRECT ANY PROBLEMS WITH SEED ESTABLISHMENT.  
INSPECTIONS SHALL BE DOCUMENTED IN WRITING AND SUBMITTED TO THE APPROPRIATE MUNICIPAL AGENCY HAVING JURISDICTION.

INSPECTION BY MUNICIPALITY - FINAL GRADING  
REMOVE UNNEEDED SUBGRADE FROM SITE.  
CALL FOR INSPECTION FROM THE APPROPRIATE MUNICIPAL AGENCY HAVING JURISDICTION AT LEAST 2 DAYS PRIOR TO FINISH.

INSPECTION BY MUNICIPALITY - LANDSCAPING

SPREAD TOPSOIL EVENLY OVER AREAS TO BE SEED. HAND RAKE LEVEL.  
BROADCAST 1.25 LB. BAG OF JONATHAN GREEN "FASTGROW" MIX OR EQUAL OVER AREA TO BE SEED. APPLY STRAW MULCH AND WATER WITHIN 2 DAYS OF COMPLETION OF TOPSOILING. CALL FOR INSPECTION FROM THE APPROPRIATE MUNICIPAL AGENCY HAVING JURISDICTION AT LEAST 2 DAYS PRIOR TO FINISH.

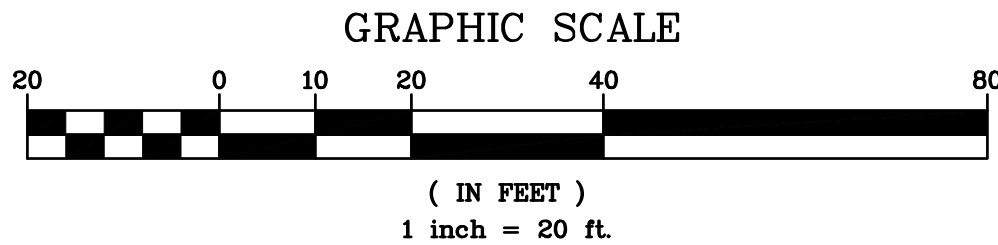
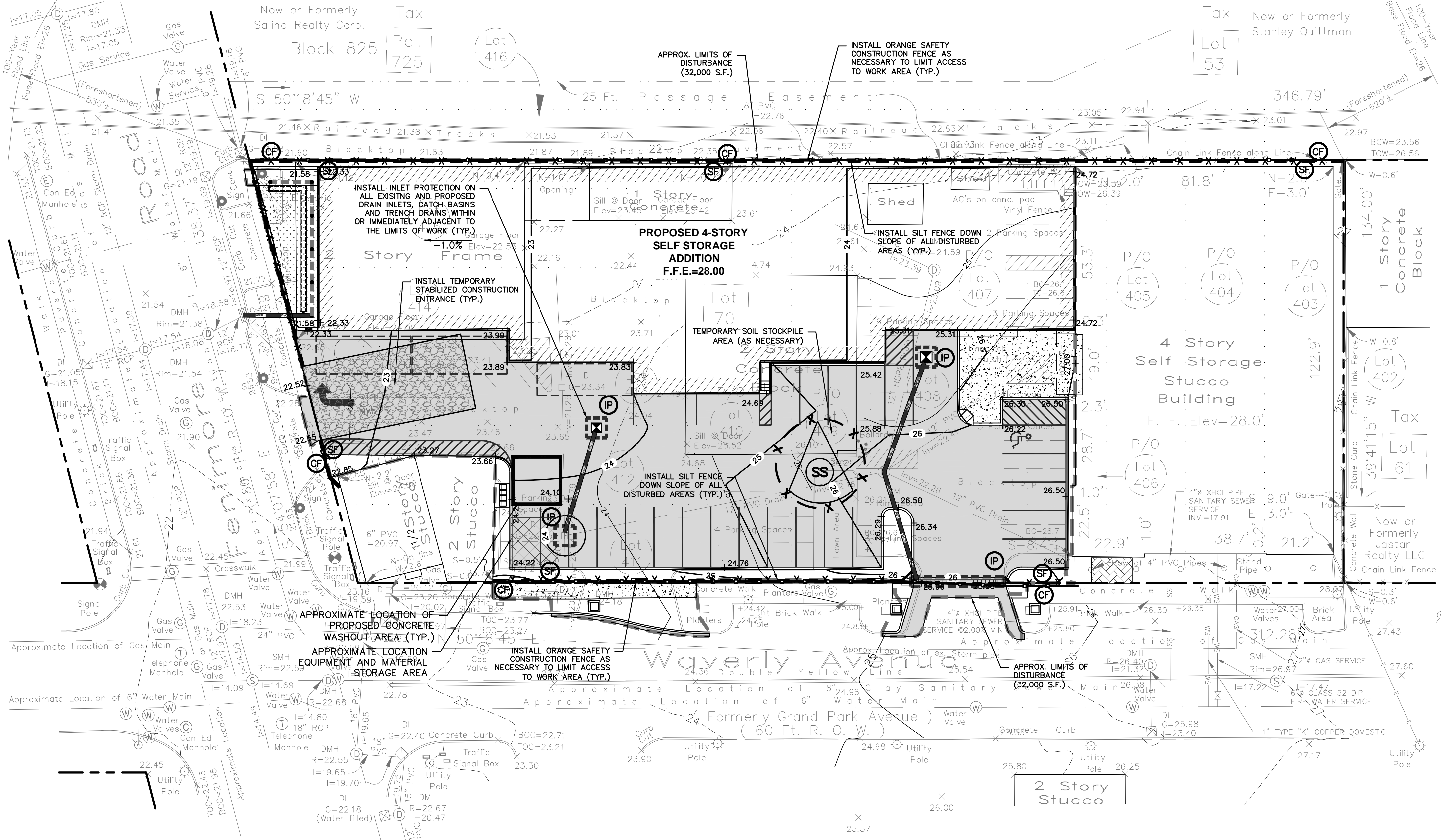
INSPECTION BY MUNICIPALITY - FINAL LANDSCAPING

GRASS ESTABLISHED.  
CALL FOR INSPECTION FROM THE APPROPRIATE MUNICIPAL AGENCY HAVING JURISDICTION AT LEAST 2 DAYS PRIOR TO FINISH.

INSPECTION BY MUNICIPALITY - FINAL INSPECTION  
ALL EROSION CONTROL MEASURES REMOVED AND GRASS ESTABLISHED.  
CALL FOR INSPECTION FROM THE APPROPRIATE MUNICIPAL AGENCY HAVING JURISDICTION AT LEAST 2 DAYS PRIOR TO FINISH.

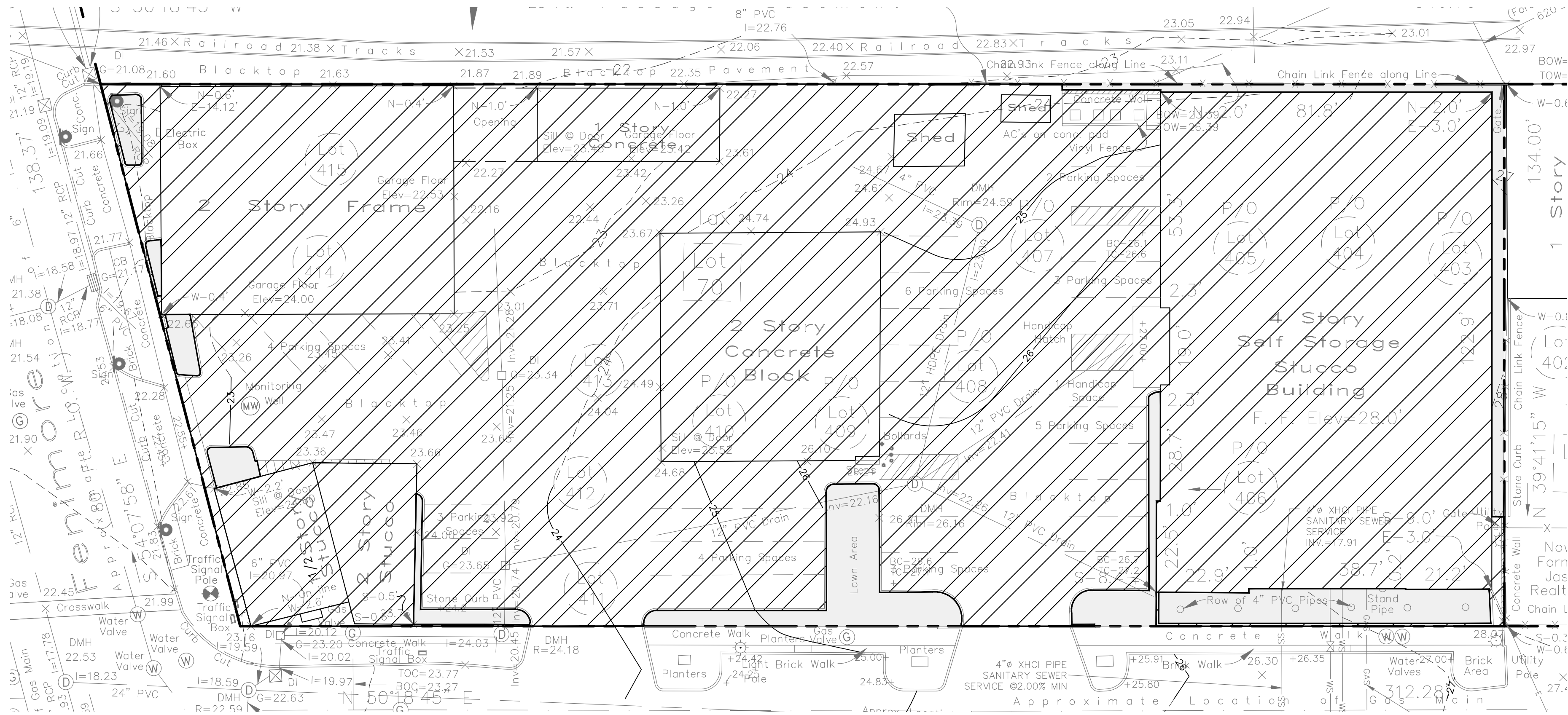
LEGEND

- TEMPORARY INLET PROTECTION [Symbol] IP
- TEMPORARY SILT FENCE - X - X - [Symbol] SF
- TEMPORARY CONSTRUCTION FENCE [Symbol] CF
- TEMPORARY SOIL STOCKPILE AREA [Symbol] SS
- STABILIZED CONSTRUCTION ENTRANCE [Symbol]
- PROPOSED LIMIT OF DISTURBANCE [Symbol]

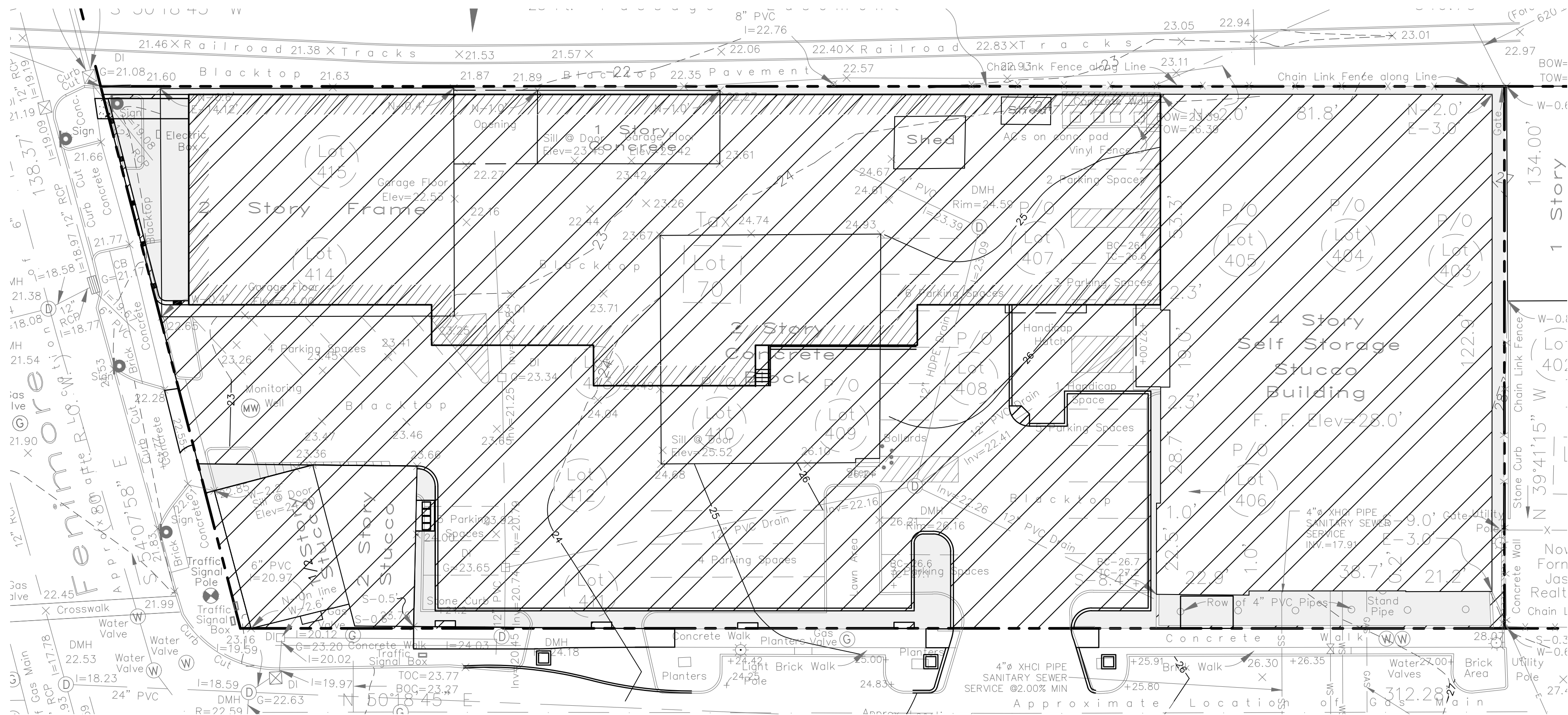


ANY ALTERATIONS OR REVISIONS OF THESE PLANS, UNLESS DONE BY OR UNDER THE DIRECTION OF THE NYS LICENSED AND REGISTERED ENGINEER THAT PREPARED THEM, IS A VIOLATION OF THE NYS EDUCATION LAW.

REVISIONS 1-14-18 2-14-18 3-14-18 4-14-18 5-14-18 6-14-18 7-14-18 8-14-18 9-14-18 10-14-18 11-14-18 12-14-18 13-14-18 14-14-18 15-14-18 16-14-18 17-14-18 18-14-18 19-14-18 20-14-18 21-14-18 22-14-18 23-14-18 24-14-18 25-14-18 26-14-18 27-14-18 28-14-18 29-14-18 30-14-18 31-14-18 32-14-18 33-14-18 34-14-18 35-14-18 36-14-18 37-14-18 38-14-18 39-14-18 40-14-18 41-14-18 42-14-18 43-14-18 44-14-18 45-14-18 46-14-18 47-14-18 48-14-18 49-14-18 50-14-18 51-14-18 52-14-18 53-14-18 54-14-18 55-14-18 56-14-18 57-14-18 58-14-18 59-14-18 60-14-18 61-14-18 62-14-18 63-14-18 64-14-18 65-14-18 66-14-18 67-14-18 68-14-18 69-14-18 70-14-18 71-14-18 72-14-18 73-14-18 74-14-18 75-14-18 76-14-18 77-14-18 78-14-18 79-14-18 80-14-18 81-14-18 82-14-18 83-14-18 84-14-18 85-14-18 86-14-18 87-14-18 88-14-18 89-14-18 90-14-18 91-14-18 92-14-18 93-14-18 94-14-18 95-14-18 96-14-18 97-14-18 98-14-18 99-14-18 100-14-18 101-14-18 102-14-18 103-14-18 104-14-18 105-14-18 106-14-18 107-14-18 108-14-18 109-14-18 110-14-18 111-14-18 112-14-18 113-14-18 114-14-18 115-14-18 116-14-18 117-14-18 118-14-18 119-14-18 120-14-18 121-14-18 122-14-18 123-14-18 124-14-18 125-14-18 126-14-18 127-14-18 128-14-18 129-14-18 130-14-18 131-14-18 132-14-18 133-14-18 134-14-18 135-14-18 136-14-18 137-14-18 138-14-18 139-14-18 140-14-18 141-14-18 142-14-18 143-14-18 144-14-18 145-14-18 146-14-18 147-14-18 148-14-18 149-14-18 150-14-18 151-14-18 152-14-18 153-14-18 154-14-18 155-14-18 156-14-18 157-14-18 158-14-18 159-14-18 160-14-18 161-14-18 162-14-18 163-14-18 164-14-18 165-14-18 166-14-18 167-14-18 168-14-18 169-14-18 170-14-18 171-14-18 172-14-18 173-14-18 174-14-18 175-14-18 176-14-18 177-14-18 178-14-18 179-14-18 180-14-18 181-14-18 182-14-18 183-14-18 184-14-18 185-14-18 186-14-18 187-14-18 188-14-18 189-14-18 190-14-18 191-14-18 192-14-18 193-14-18 194-14-18 195-14-18 196-14-18 197-14-18 198-14-18 199-14-18 200-14-18 201-14-18 202-14-18 203-14-18 204-14-18 205-14-18 206-14-18 207-14-18 208-14-18 209-14-18 210-14-18 211-14-18 212-14-18 213-14-18 214-14-18 215-14-18 216-14-18 217-14-18 218-14-18 219-14-18 220-14-18 221-14-18 222-14-18 223-14-18 224-14-18 225-14-18 226-14-18 227-14-18 228-14-18 229-14-18 230-14-18 231-14-18 232-14-18 233-14-18 234-14-18 235-14-18 236-14-18 237-14-18 238-14-18 239-14-18 240-14-18 241-14-18 242-14-18 243-14-18 244-14-18 245-14-18 246-14-18 247-14-18 248-14-18 249-14-18 250-14-18 251-14-18 252-14-18 253-14-18 254-14-18 255-14-18 256-14-18 257-14-18 258-14-18 259-14-18 260-14-18 261-14-18 262-14-18 263-14-18 264-14-18 265-14-18 266-14-18 267-14-18 268-14-18 269-14-18 270-14-18 271-14-18 272-14-18 273-14-18 274-14-18 275-14-18 276-14-18 277-14-18 278-14-18 279-14-18 280-14-18 281-14-18 282-14-18 283-14-18 284-14-18 285-14-18 286-14-18 287-14-18 288-14-18 289-14-18 290-14-18 291-14-18 292-14-18 293-14-18 294-14-18 295-14-18 296-14-18 297-14-18 298-14-18 299-14-18 300-14-18 301-14-18 302-14-18 303-14-18 304-14-18 305-14-18 306-14-18 307-14-18 308-14-18 309-14-18 310-14-18 311-14-18 312-14-18 313-14-18 314-14-18 315-14-18 316-14-18 317-14-18 318-14-18 319-14-18 320-14-18 321-14-18 322-14-18 323-14-18 324-14-18 325-14-18 326-14-18 327-14-18 328-14-18 329-14-18 330-14-18 331-14-18 332-14-18 333-14-18 334-14-18 335-14-18 336-14-18 337-14-18 338-14-18 339-14-18 340-14-18 341-14-18 342-14-18 343-14-18 344-14-18 345-14-18 346-14-18 347-14-18 348-14-18 349-14-18 350-14-18 351-14-18 352-14-18 353-14-18 354-14-18 355-14-18 356-14-18 357-14-18 358-14-18 359-14-18 360-14-18 361-14-18 362-14-18 363-14-18 364-14-18 365-14-18 366-14-18 367-14-18 368-14-18 369-14-18 370-14-18 371-14-18 372-14-18 373-14-18 374-14-18 375-14-18 376-14-18 377-14-18 378-14-18 379-14-18 380-14-18 381-14-18 382-14-18 383-14-18 384-14-18 385-14-18 386-14-18 387-14-18 388-14-18 389-14-18 390-14-18 391-14-18 392-14-18 393-14-18 394-14-18 395-14-18 396-14-18 397-14-18 398-14-18 399-14-18 400-14-18 401-14-18 402-14-18 403-14-18 404-14-18 405-14-18 406-14-18 407-14-18 408-14-18 409-14-18 410-14-18 411-14-18 412-14-18 413-14-18 414-14-18 415-14-18 416-14-18 417-14-18 418-14-18 419-14-18 420-14-18 421-14-18 422-14-18 423-14-18 424-14-18 425-14-18 426-14-18 427-14-18 428-14-18 429-14-18 430-14-18 431-14-18 432-14-18 433-14-18 434-14-18 435-14-18 436-14-18 437-14-18 438-14-18 439-14-18 440-14-18 441-14-18 442-14-18 443-14-18 444-14-18 445-14-18 446-14-18 447-14-18 448-14-18 449-14-18 450-14-18 451-14-18 452-14-18 453-14-18 454-14-18 455-14-18 456-14-18 457-14-18 458-14-18 459-14-18 460-14-18 461-14-18 462-14-18 463-14-18 464-14-18 465-14-18 466-14-18 467-14-18 468-14-18 469-14-18 470-14-18 471-14-18 472-14-18 473-14-18 474-14-18 475-14-18 476-14-18 477-14-18 478-14-18 479-14-18 480-14-18 481-14-18 482-14-18 483-14-18 484-14-18 485-14-18 486-14-18 487-14-18 488-14-18 489-14-18 490-14-18 491-14-18 492-14-18 493-14-18 494-14-18 495-14-18 496-14-18 497-14-18 498-14-18 499-14-18 500-14-18 501-14-18 502-14-18 503-14-18 504-14-18 505-14-18 506-14-18 507-14-18 508-14-18 509-14-18 510-14-18 511-14-18 512-14-18 513-14-18 514-14-18 515-14-18 516-14-18 517-14-18 518-14-18 519-14-18 520-14-18 521-14-18 522-14-18 523-14-18 524-14-18 525-14-18 526-14-18 527-14-18 528-14-18 529-14-18 530-14-18 531-14-18 532-14-18 533-14-18 534-14-18 535-14-18 536-14-18 537-14-18 538-14-18 539-14-18 540-14-18 541-14-18 542-14-18 543-14-18 544-14-18 545-14-18 546-14-18 547-14-18 548-14-18 549-14-18 550-14-18 551-14-18 552-14-18 553-14-18 554-14-18 555-14-18 556-14-18 557-14-18 558-14-18 559-14-18 560-14-18 561-14-18 562-14-18 563-14-18 564-14-18 565-14-18 566-14-18 567-14-18 568-14-18 569-14-18 570-14-18 571-14-18 572-14-18 573-14-18 574-14-18 575-14-18 576-14-18 577-14-18 578-14-18 579-14-18 580-14-18 581-14-18 582-14-18 583-14-18 584-14-18 585-14-18 586-14-18 587-14-18 588-14-18 589-14-18 590-14-18 591-14-18 592-14-18 593-14-18 594-14-18 595-14-18 596-14-18 597-14-18 598-14-18 599-14-18 600-14-18 601-14-18 602-14-18 603-14-18 604-14-18 605-14-18 606-14-18 607-14-18 608-14-18 609-14-18 610-14-18 611-14-18 612-14-18 613-14-18 614-14-18 615-14-18 616-14-18 617-14-18 618-14-18 619-14-18 620-14-18 621-14-18 622-14-18 623-14-18 624-14-18 625-14-18 626-14-18 627-14-18 628-14-18 629-14-18 630-14-18 631-14-18 632-14-18 633-14-18 634-14-18 635-14-18 636-14-18 637-14-18 638-14-18 639-14-18 640-14-18 641-14-18 642-14-18 643-14-18 644-14-18 645-14-18 646-14-18 647-14-18 648-14-18 649-14-18 650-14-18 651-14-18 652-14-18 653-14-18 654-14-18 655-14-18 656-14-18 657-14-18 658-14-18 659-14-18 660-14-18 661-14-18 662-14-18 663-14-18 664-14-18 665-14-18 666-14-18 667-14-18 668-14-18 669-14-18 670-14-18 671-14-18 672-14-18 673-14-18 674-14-18 675-14-18 676-14-18 677-14-18 678-14-18 679-14-18 680-14-18 681-14-18 682-14-18 683-14-18 684-14-18 685-14-18 686-14-18 687-14-18 688-14-18 689-14-18 690-14-18 691-14-18 692-14-18 693-14-18 694-14-18 695-14-18 696-14-18 697-14-18 698-14-18 699-14-18 700-14-18 701-14-18 702-14-18 703-14-18 704-14-18 705-14-18 706-14-18 707-14-18 708-14-18 709-14-18 710-14-18 711-14-18 712-14-18 713-14-18 714-14-18 715-14-18 716-14-18 717-14-18 718-14-18 719-14-18 720-14-18 721-14-18 722-14-18 723-14-18 724-14-18 725-14-18 726-14-18 727-14-18 728-14-18 729-14-18 730-14-18 731-14-18 732-14-18 733-14-18 734-14-18 735-14-18 736-14-18 737-14-18 738-14-18 739-14-18 740-14-18 741-14-18 742-14-18 743-14-18 744-14-18 745-14-18 746-14-18 747-14-18 748-14-18 749-14-18 750-14-18 751-14-18 752-14-18 753-14-18 754-14-18 755-14-18 756-14-18 757-14-18 758-14-18 759-14-18 760-14-18 761-14-18 762-14-18 763-14-18 764-14-18 765-14-18 766-14-18 767-14-18 768-14-18 769-14-18 770-14-18 771-14-18 772-14-18 773-14-18 774-14-18 775-14-18 776-14-18 777-14-18 778-14-18 779-14-18 780-14-18 781-14-18 782-14-18 783-14-18 784-14-18 785-14-18 786-14-18 787-14-18 788-14-18 789-14-18 790-14-18 791-14-18 792-14-18 793-14-18 794-14-18 795-14-18 796-14-18 797-14-18 798-14-18 799-14-18 800-14-18 801-14-18 802-14-18 803-14-18 804-14-18 805-14-18 806-14-18 807-14-18 808-14-18 809-14-18 810-14-18 811-14-18 812-14-18 813-14-18 814-14-18 815-14-18 816-14-18 817-14-18 818-14-18 819-14-18 820-14-18 821-14-18 822-14-18 823-14-18 824-14-18 825-14-18 826-14-18 827-14-18 828-14-18 829-14-18 830-14-18 831-14-18 832-14-18 833-14-18 834-14-18 835-14-18 836-14-18 837-14-18 838-14-18 839-14-18 840-14-18 841-14-18 842-14-18 843-14-18 844-14-18 845-14-18 846-14-18 847-14-18 848-14-18 849-14-18 850-14-18 851-14-18 852-14-18 853-14-18 854-14-18 855-14-18 856-14-18 857-14-18 858-14-18 859-14-18 860-14-18 861-14-18 862-14-18 863-14-18 864-14-18 865-14-18 866-14-18 867-14-18 868-14-18 869-14-18 870-14-18 871-14-18 872-14-18 873-14-18 874-14-18 875-14-18 876-14-18 877-14-18 878-14-18 879-14-18 880-14-18 881-14-18 882-14-18 883-14-18 884-14-18 885-14-18 886-14-18 887-14-18 888-14-18 889-14-18 890-14-18 891-14-18 892-14-18 893-14-18 894-14-18 895-14-18 896-14-18 897-14-18 898-14-18 899-14-18 900-14-18 901-14-18 902-14-18 903-14-18 904-14-18 905-14-18 906-14-18 907-14-18 908-14-18 909-14-18 910-14-18 911-14-18 912-14-18 913-14-18 914-14-18 915-14-18 916-14-18 917-14-18 918-14-18 919-14-18 920-14-18 921-14-18 922-14-18 923-14-18 924-14-18 925-14-18 926-14-18 927-14-18 928-14-18 929-14-18 930-14-18 931-14-18 932-14-18 933-14-18 934-14-18 935-14-18 936-14-18 937-14-18 938-14-18 939-14-18 940-14-18 941-14-18 942-14-18 943-14-18 944-14-18 945-14-18 946-14-18 947-14-18 948-14-18 949-14-18 950-14-18 951-14-18 952-14-18 953-14-18 954-14-18 955-14-18 956-14-18 957-14-18 958-14-18 959-14-18 960-14-18 961-14-18 962-14-18 963-14-18 964-14-18 965-14-18 966-14-18 967-14-18 968-14-18 969-14-18 970-14-18 971-14-18 972-14-18 973-14-18 974-14-18 975-14-18 976-14-18 977-14-18 978-14-18 979-14-18 980-14-18 981-14-18 982-14-18 983-14-18 984-14-18 985-14-18 986-14-18 987-14-18 988-14-18 989-14-18 990-14-18 991-14-18 992-14-18 993-14-18 994-14-18 995-14-18 996-14-18 997-14-18 998-14-18 999-14-18 1000-14-18	PROJECT: SELF STORAGE BUILDING ADDITION 560 FENIMORE ROAD VILLAGE OF MAMARONECK WESTCHESTER COUNTY - NEW YORK	EROSION & SEDIMENT CONTROL PLAN	HUDSON ENGINEERING & CONSULTING, P.C. 45 Knollwood Road - Suite 201 Elmsford, New York 10523 T: 914-909-0420 F:
--	---	---------------------------------	--



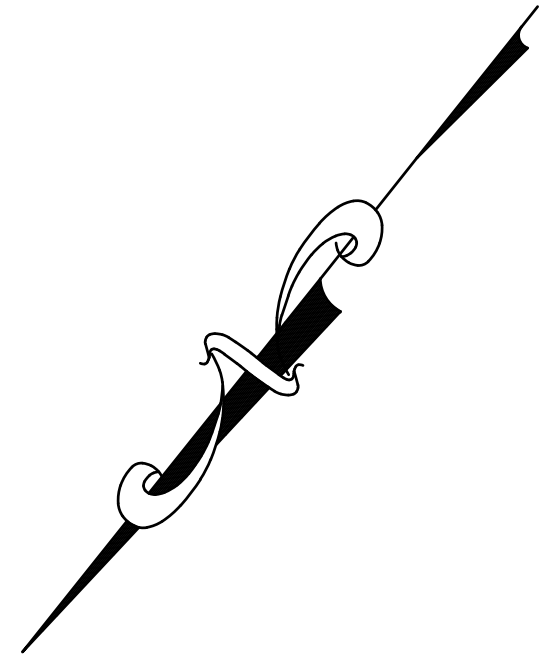
EXISTING SITE COVERAGE  
SCALE: 1"=20'



PROPOSED SITE COVERAGE  
SCALE: 1"=20'

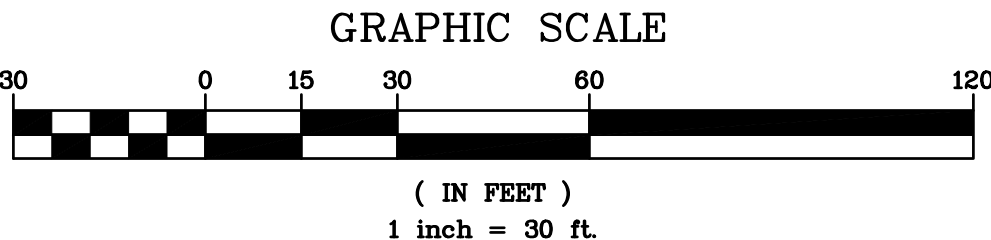
**Existing Site Coverage**  
Impervious: 41,390 SF  
Pervious: 2,766 SF

**Proposed Site Coverage**  
Impervious: 40,675 SF  
Pervious: 3,481 SF



**LEGEND**

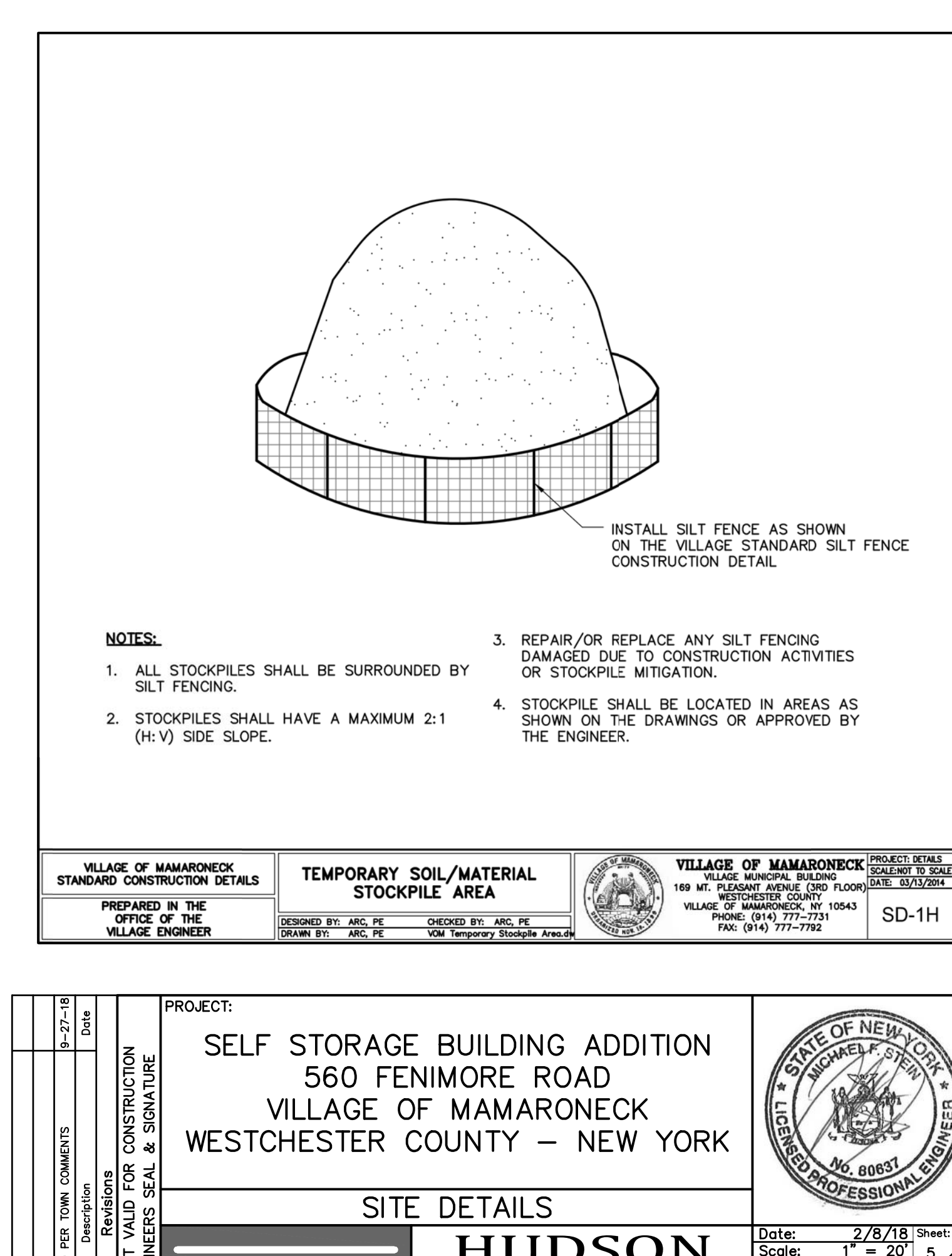
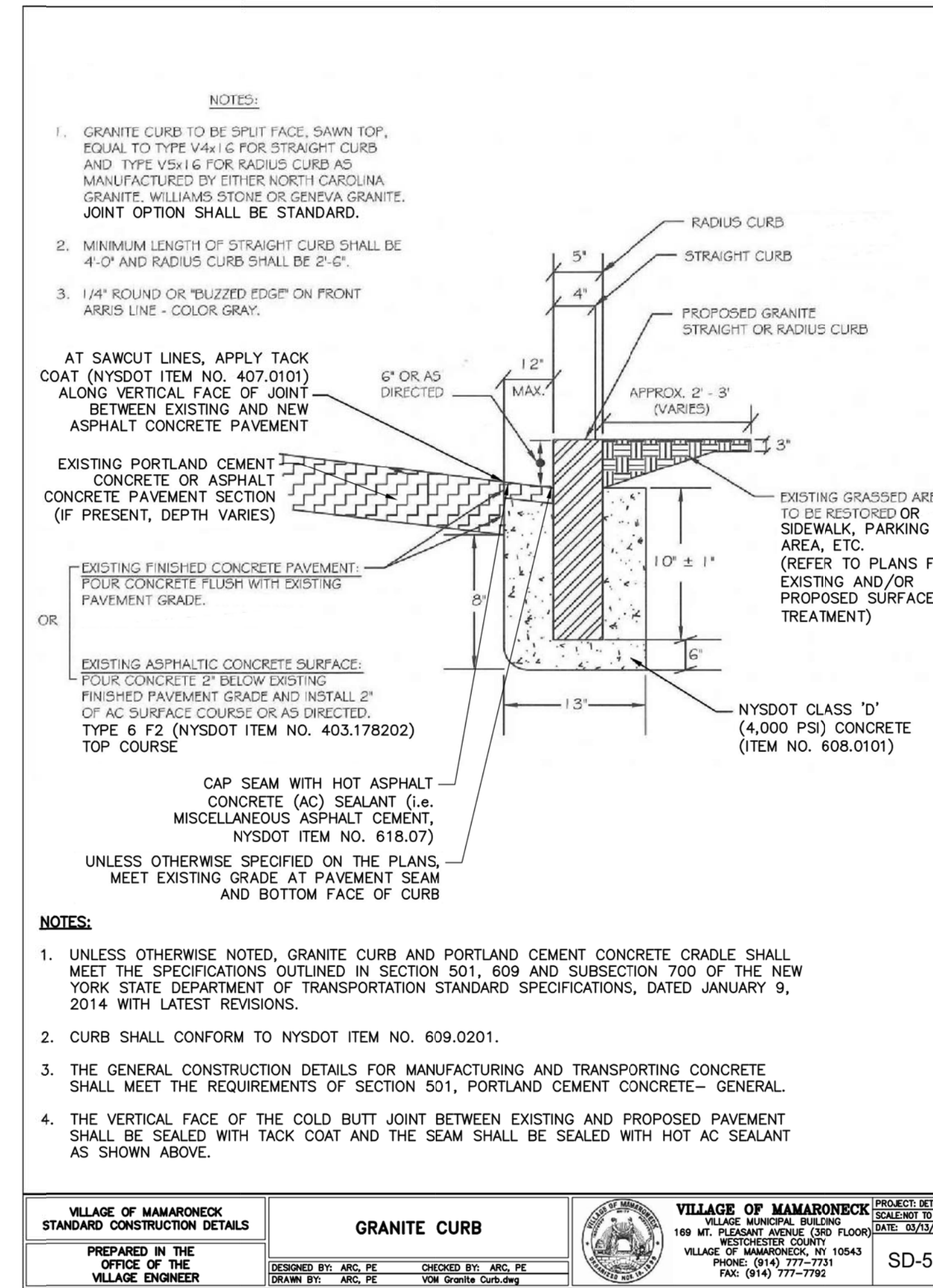
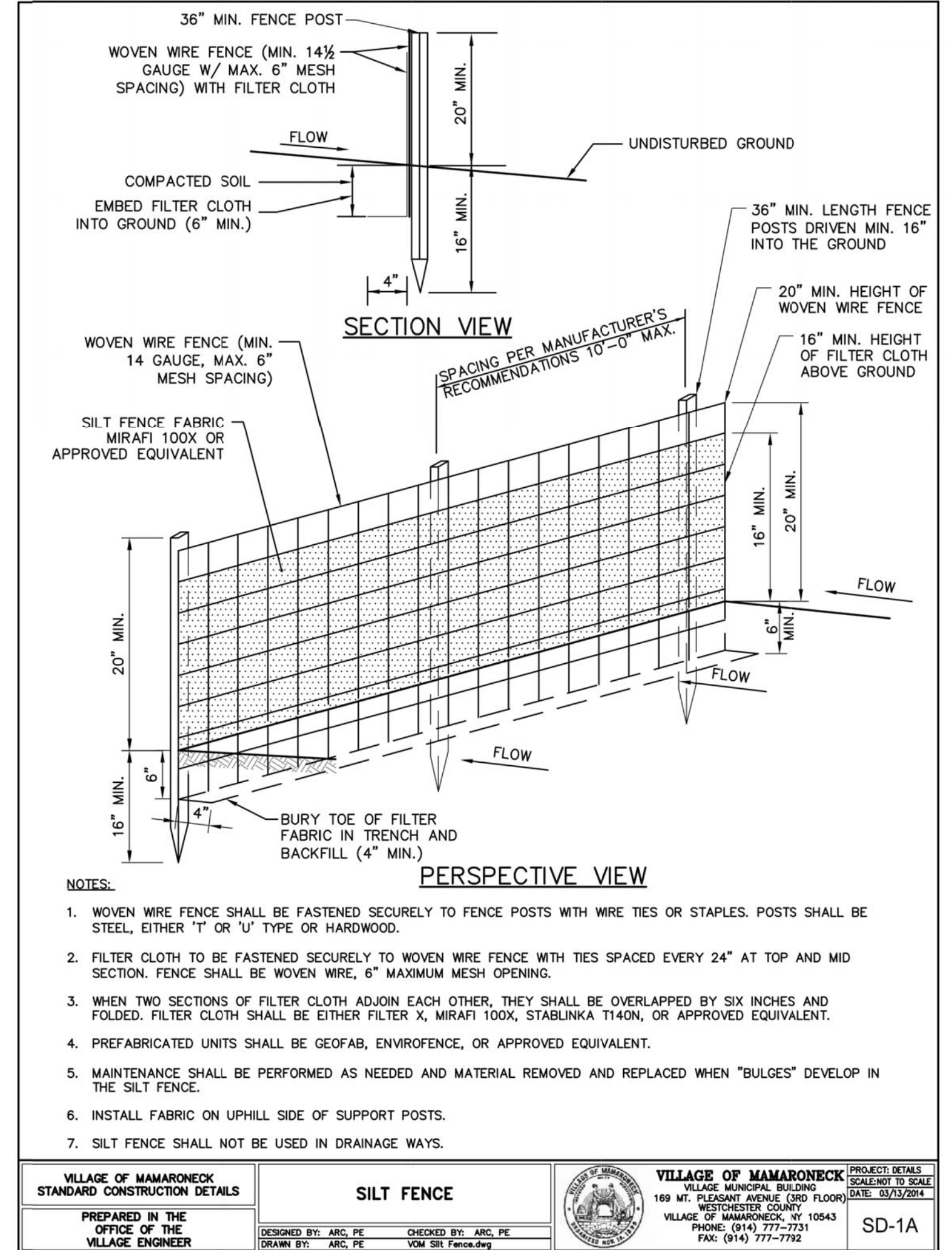
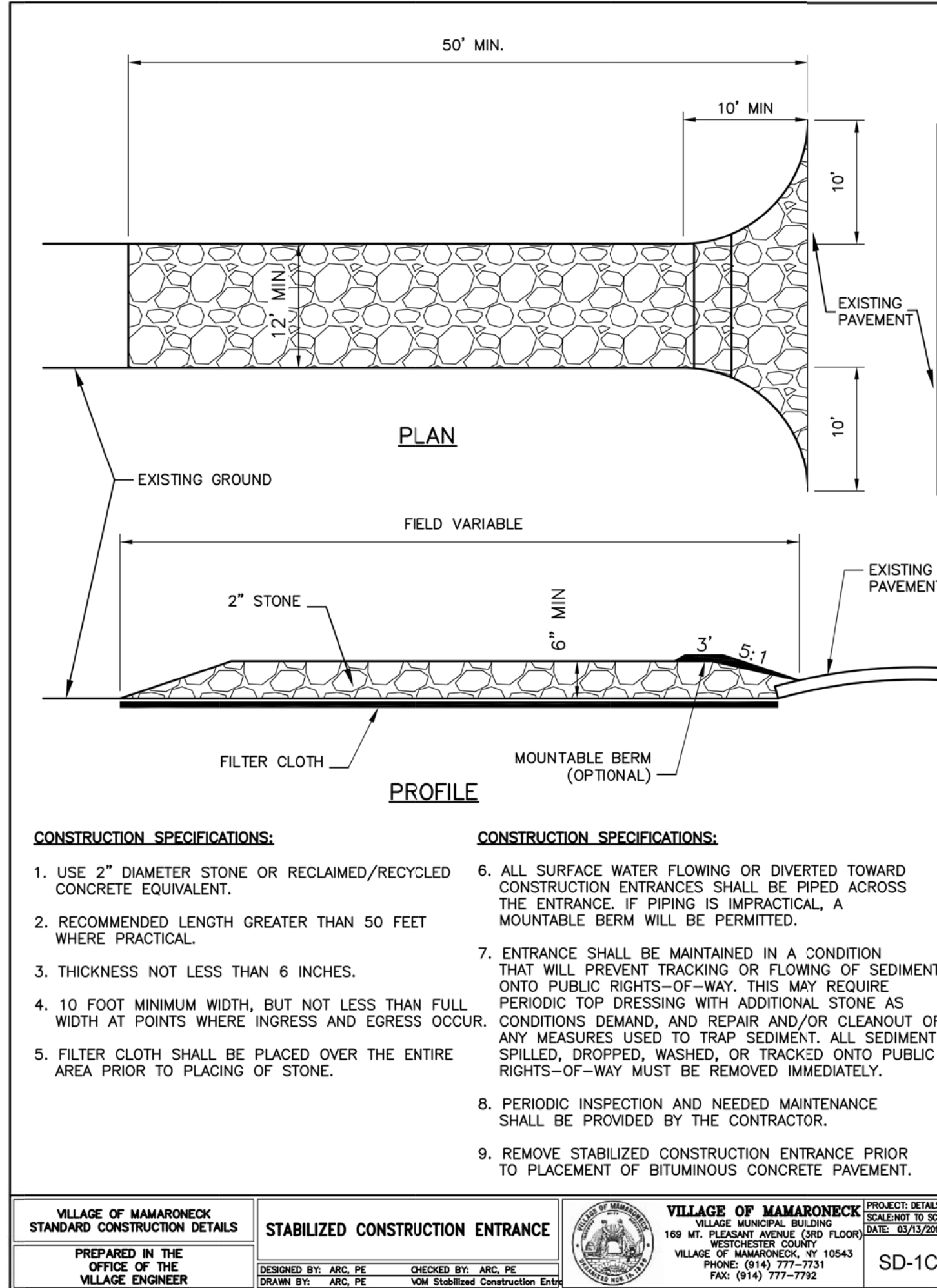
IMPERVIOUS COVER  
PERVIOUS COVER



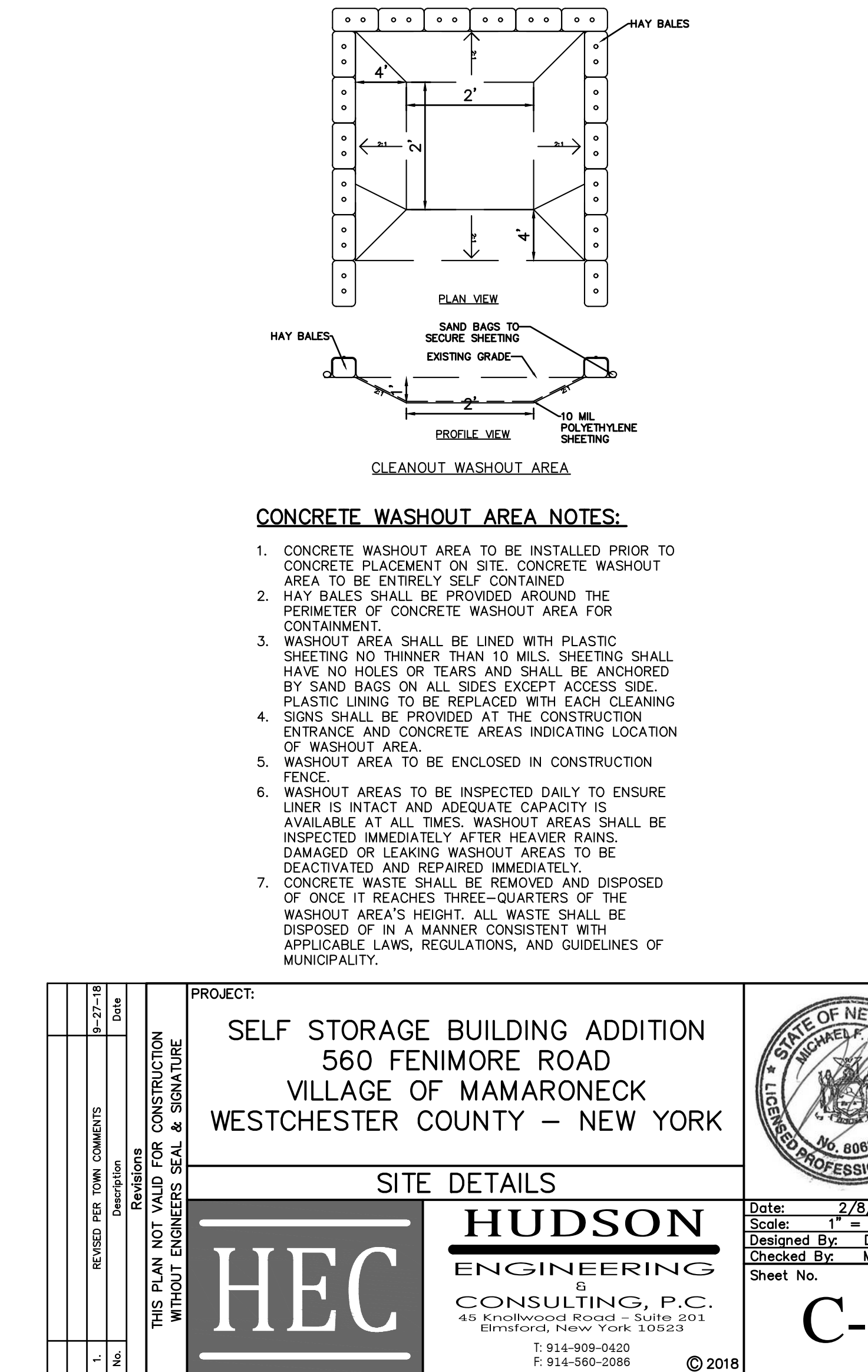
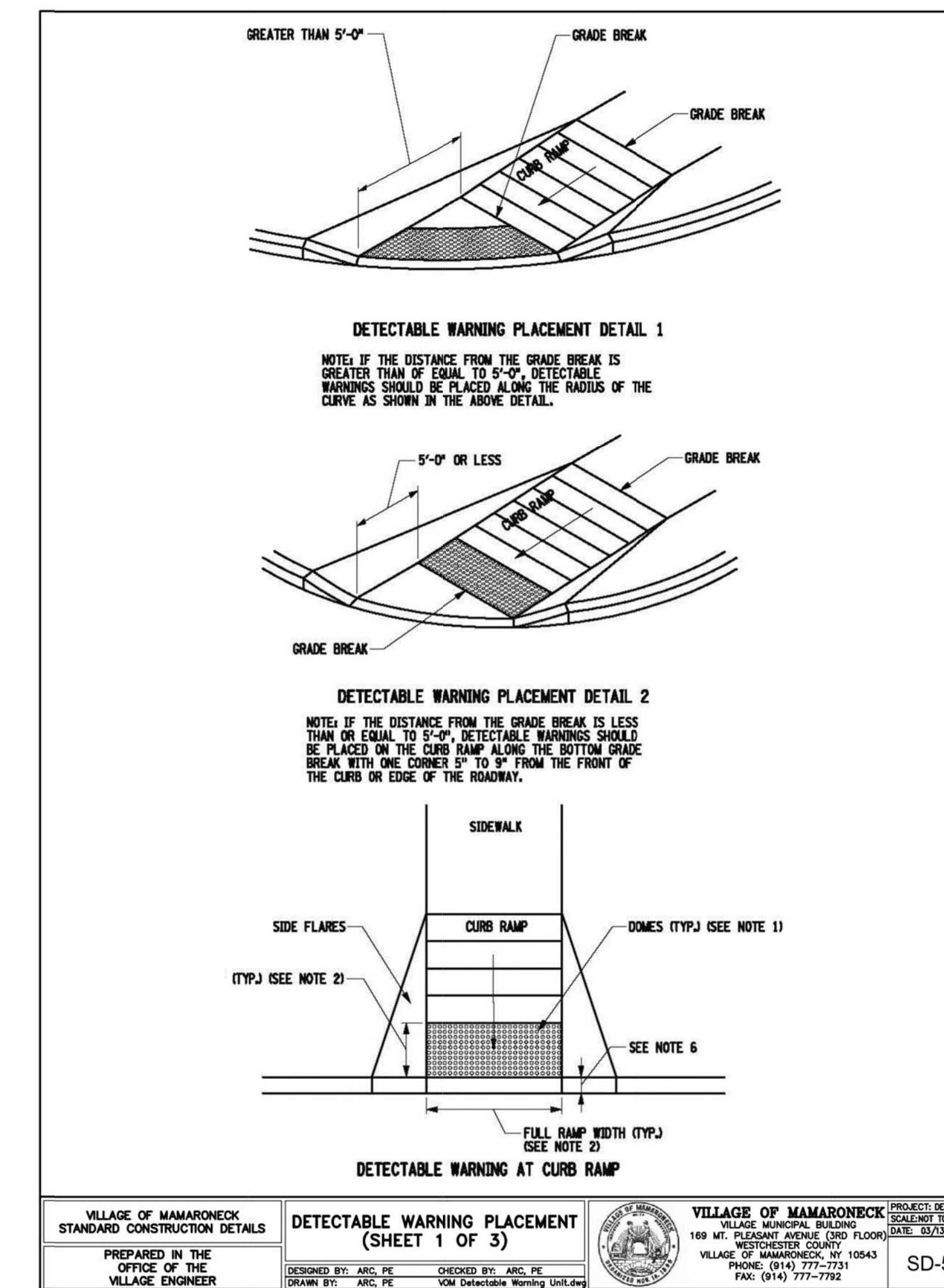
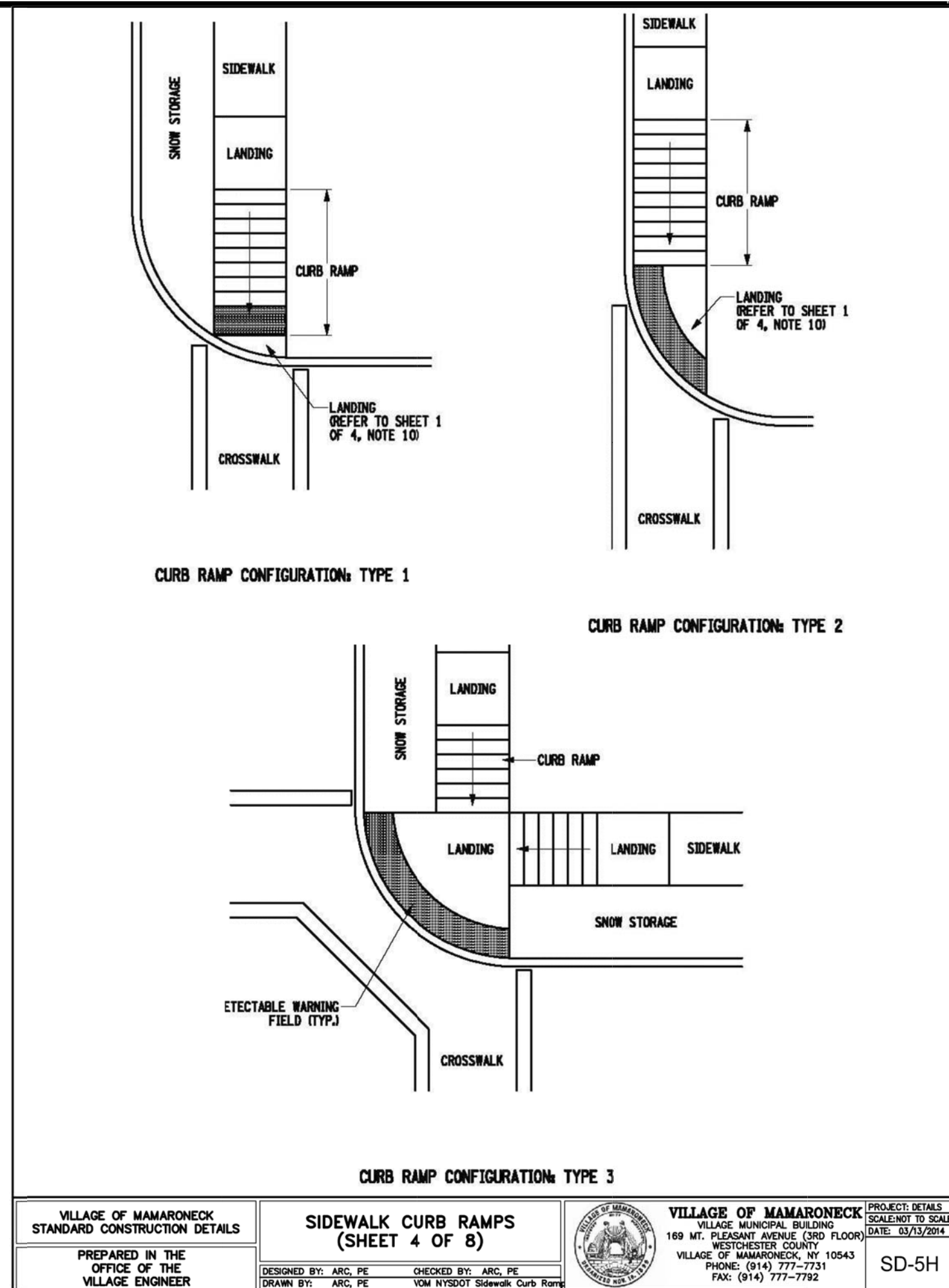
ANY ALTERATIONS OR REVISIONS OF THESE PLANS, UNLESS DONE BY OR UNDER THE DIRECTION OF THE NYS LICENSED AND REGISTERED ENGINEER THAT PREPARED THEM, IS A VIOLATION OF THE NYS EDUCATION LAW.

<div>2</div> <div>REVIEWED FOR MEETING WITH TOWN STAFF</div> <div>11-14-18</div> <div>DATE</div>	<div>1</div> <div>REVISED FOR COMMENTS</div> <div>11-14-18</div> <div>DATE</div>	<div>1</div> <div>REVISIONS</div> <div>11-14-18</div> <div>DATE</div>	PROJECT:	
			SELF STORAGE BUILDING ADDITION 560 FENIMORE ROAD VILLAGE OF MAMARONECK WESTCHESTER COUNTY – NEW YORK	
			SITE COVERAGE PLAN	
			<div><div>HEC</div><div><b>HUDSON</b> ENGINEERING &amp; CONSULTING, P.C. 45 Knollwood Road – Suite 201 Elmsford, New York 10523 T: 914-909-0420 F: 914-560-2086</div></div>	
THIS PLAN NOT VALID FOR CONSTRUCTION WITHOUT ENGINEERS SEAL & SIGNATURE			<div><div>STATE OF NEW YORK</div><div>MICHAEL J. STERN</div><div>NO. 60637</div><div>LICENSED PROFESSIONAL ENGINEER</div></div>	<div>Date: 2/8/18 Sheet: 4</div> <div>Designed By: D.C.</div> <div>Checked By: M.S.</div> <div>Sheet No. C-4</div>











## CONSTRUCTION PHASE:

DURING THE CONSTRUCTION PHASE OF THE PROJECT, A SEDIMENT AND EROSION CONTROL PLAN SHALL BE IMPLEMENTED IN ACCORDANCE WITH THE NEW YORK STATE DEPARTMENT OF ENVIRONMENTAL CONSERVATION'S BEST MANAGEMENT PRACTICES (BMP). THE PRIMARY GOALS OF THE SEDIMENT AND EROSION CONTROL PLAN ARE TO PREVENT THE TRACKING OF DIRT AND MUD INTO ADJACENT ROADS, TO PREVENT MUD AND SILT FROM ENTERING INTO EXISTING AND PROPOSED DRAINAGE FACILITIES, AND TO PROTECT THE RECEIVING WATERS FROM CONTAMINATION DURING THE CONSTRUCTION.

DURING CONSTRUCTION, THE PARTY RESPONSIBLE FOR IMPLEMENTING THE TEMPORARY (DURING CONSTRUCTION) STORMWATER MANAGEMENT FACILITIES MAINTENANCE PROGRAM WILL BE THE OWNER. THE NAME AND CONTACT INFORMATION WILL BE FILED WITH THE VILLAGE OF CARMEL AND THE NYSDEC AT THE TIME OF THE PRECONSTRUCTION MEETING.

A NEW YORK STATE PROFESSIONAL ENGINEER OR CERTIFIED PROFESSIONAL IN EROSION AND SEDIMENT CONTROL (P.E. OR CPESC) SHALL CONDUCT AN ASSESSMENT OF THE SITE PRIOR TO THE COMMENCEMENT OF CONSTRUCTION AND CERTIFY IN AN INSPECTION REPORT THAT THE APPROPRIATE EROSION AND SEDIMENT CONTROLS SHOWN ON THE PLAN HAVE BEEN ADEQUATELY INSTALLED AND/OR IMPLEMENTED TO ENSURE OVERALL PREPARATION OF THE SITE FOR CONSTRUCTION. FOLLOWING THE COMMENCEMENT OF CONSTRUCTION, SITE INSPECTIONS SHALL BE CONDUCTED BY THE P.E. OR CPESC AT LEAST EVERY 7 CALENDAR DAYS AND WITHIN 24 HOURS OF THE END OF A STORM EVENT OF 0.5 INCHES OR GREATER.

DURING EACH INSPECTION, THE REPRESENTATIVE SHALL RECORD THE FOLLOWING:

- ON A SITE MAP, INDICATE THE EXTENT OF ALL DISTURBED SITE AREAS AND DRAINAGE PATHWAYS. INDICATE SITE AREAS THAT ARE EXPECTED TO UNDERGO INITIAL DISTURBANCE OR SIGNIFICANT SITE WORK WITHIN THE NEXT 14-DAY PERIOD;
- INDICATE ON A SITE MAP ALL AREAS OF THE SITE THAT HAVE UNDERGONE TEMPORARY OR PERMANENT STABILIZATION;
- INDICATE ALL DISTURBED SITE AREAS THAT HAVE NOT UNDERGONE ACTIVE SITE WORK DURING THE PREVIOUS 14-DAY PERIOD;
- INSPECT ALL SEDIMENT CONTROL PRACTICES AND RECORD APPROXIMATE DEGREE OF SEDIMENT ACCUMULATION AS A PERCENTAGE OF THE SEDIMENT STORAGE VOLUME;
- INSPECT ALL EROSION AND SEDIMENT CONTROL PRACTICES AND RECORD ALL MAINTENANCE REQUIREMENTS. IDENTIFY ANY EVIDENCE OF RILL OR GULLY EROSION OCCURRING ON SLOPES AND ANY LOSS OF STABILIZING VEGETATION OR SEEDING/MULCHING. DOCUMENT ANY EXCESSIVE DEPOSITION OF SEDIMENT OR PONDING WATER ALONG THE BARRIER. RECORD THE DEPTH OF SEDIMENT WITHIN CONTAINMENT STRUCTURES AND ANY EROSION NEAR OUTLET AND OVERFLOW STRUCTURES.
- ALL IDENTIFIED DEFICIENCIES.

THE P.E. OR CPESC SHALL MAINTAIN A RECORD OF ALL INSPECTION REPORTS IN A SITE LOGBOOK. THE SITE LOGBOOK SHALL BE MAINTAINED ON-SITE AND BE MADE AVAILABLE TO THE VILLAGE OF BRARICOFF MANOR AND THE NYSDEC. A SUMMARY OF THE SITE INSPECTION ACTIVITIES SHALL BE POSTED ON A MONTHLY BASIS IN A PUBLICLY ACCESSIBLE LOCATION AT THE SITE.

THE PROJECTS ANTICIPATED START DATE IS SEPTEMBER 2017 AND THE ANTICIPATED COMPLETION DATE IS ESTIMATED TO OCCUR IN SEPTEMBER 2018.

## CONSTRUCTION SEQUENCING:

THE FOLLOWING EROSION CONTROL SCHEDULE SHALL BE UTILIZED:

- INSTALL CONSTRUCTION ENTRANCE TO THE DEVELOPMENT AREA.
- ESTABLISH CONSTRUCTION STAGING AREA.
- INSTALL TREE PROTECTION ON TREES AS NOTED ON PLANS.
- SELECTIVE VEGETATION REMOVAL FOR SILT FENCE INSTALLATION.
- INSTALL SILT FENCE DOWN SLOPE OF ALL AREAS TO BE DISTURBED AS SHOWN ON THE PLAN.
- REMOVE TREES WHERE NECESSARY (CLEAR & GRUB) FOR THE PROPOSED CONSTRUCTION.
- STRIP TOPSOIL AND STOCKPILE AT THE LOCATIONS SPECIFIED ON THE PLANS (UP GRADIENT OF EROSION CONTROL MEASURES). TEMPORARILY STOCKPILE TOPSOIL WITHIN 100 FEET OF THE SITE. BEGIN STOCKPILING ON OCTOBER 31ST PLANTING SEASON OR BY COVERING WITH A TARP(AULING) NOVEMBER 1ST THROUGH APRIL 30TH. INSTALL SILT FENCE AROUND TOE OF SLOPE.
- DEMOLISH ANY EXISTING SITE FEATURES AND/OR STRUCTURES NOTED AS BEING REMOVED ON THE CONSTRUCTION DOCUMENTS, AND DISPOSE OF OFF-SITE.
- ROUGH GRADE SITE.
- INSTALL ADDITIONAL SILT FENCING AS NECESSARY.
- ROUGH GRADE PARKING LOT AND INSTALL TRENCH DRAINS AND DRAIN INLETS, AS WELL AS ALL ASSOCIATED ONSITE PIPING.
- OBTAIN STREET OPENING PERMIT FOR DRAINAGE CONNECTION TO EXISTING CATCH BASIN IN FENIMORE ROAD, AS WELL AS PROPOSED CATCH BASIN CUT WIDENINGS.
- INSTALL DRAINAGE WORK TRIBUTARY TO EXISTING MUNICIPAL CATCH BASIN IN FENIMORE ROAD UP TO LOCATION OF PROPOSED STORMWATER PLANTER18. EXCAVATE AND CONSTRUCT FOUNDATIONS FOR NEW BUILDING.
- CONSTRUCT STORMWATER PLANTER ADJACENT TO BUILDING ADDITION.
- CONSTRUCT BUILDING. INSTALL AND CONNECT ALL ROOF DRAIN LEADERS TO PREVIOUSLY INSTALLED STORMWATER PLANTER.
- INSTALL CURBING, AND SUB-BASE COURSES. FINE GRADE AND SEED ALL DISTURBED AREAS. SPREAD SALT HAY OVER SEEDED AREAS.
- INSTALL BITUMINOUS CONCRETE TOP COURSE.
- CLEAN PAVEMENT, DRAIN LINES, CATCH BASINS AND PRETREATMENT DEVICES. CLEAN EXFILTRATION/ATTENUATION GALLERIES.
- REMOVE ALL TEMPORARY SOIL EROSION AND SEDIMENT CONTROL MEASURES AFTER THE SITE IS STABILIZED WITH VEGETATION.

\*SOIL EROSION AND SEDIMENT CONTROL MAINTENANCE MUST OCCUR EVERY TWO WEEKS AND PRIOR TO AND AFTER EVERY ½" OR GREATER RAINFALL EVENT.

## CONSTRUCTION PRACTICES TO MINIMIZE STORMWATER CONTAMINATION:

### GENERAL:

ADEQUATE MEASURES SHALL BE TAKEN TO MINIMIZE CONTAMINANT PARTICLES ARISING FROM THE DISCHARGE OF SOLID MATERIALS, INCLUDING BUILDING MATERIALS, GRADING OPERATIONS, AND THE RECLAMATION AND PLACEMENT OF PAVEMENT, DURING PROJECT CONSTRUCTION, INCLUDING BUT NOT LIMITED TO:

- BUILDING MATERIALS, GARBAGE, AND DEBRIS SHALL BE CLEANED UP DAILY AND DEPOSITED INTO DUMPSTERS, WHICH WILL BE PERIODICALLY REMOVED FROM THE SITE AND APPROPRIATELY DISPOSED OF. ALL DUMPSTERS AND CONTAINERS LEFT ON-SITE SHALL BE COVERED AND SURROUNDED WITH SILT FENCE IN ORDER TO PREVENT CONTAMINANTS FROM LEAVING THE SITE. SILT FENCING SHALL BE INSPECTED ON A WEEKLY BASIS.
- DUMP TRUCKS HAULING MATERIAL FROM THE CONSTRUCTION SITE WILL BE COVERED WITH A TARP(AULING).
- THE PAVED STREET ADJACENT TO THE SITE ENTRANCE WILL BE SWEEP DAILY TO REMOVE EXCESS MUD, DIRT, OR ROCK TRACKED FROM THE SITE.
- PETROLEUM PRODUCTS WILL BE STORED IN TIGHTLY SEALED CONTAINERS THAT ARE CLEARLY LABELED.
- ALL VEHICLES ON SITE WILL BE MONITORED FOR LEAKS AND RECEIVE REGULAR PREVENTIVE MAINTENANCE TO REDUCE THE CHANCE OF LEAKAGE.
- ALL SPILLS WILL BE CLEANED UP IMMEDIATELY UPON DISCOVERY. SPILLS LARGE ENOUGH TO REACH THE STORM SYSTEM WILL BE REPORTED TO THE NATIONAL RESPONSE CENTER AT 1-800-424-8802.
- MATERIALS AND EQUIPMENT NECESSARY FOR SPILL CLEANUP WILL BE KEPT IN THE TEMPORARY MATERIAL STORAGE TRAILER ON-SITE. EQUIPMENT WILL INCLUDE, BUT NOT BE LIMITED TO, BROOMS, DUST PANS, MOPS, RAGS, GLOVES, GOGGLES, KITTY LITTER, SAND, SAW DUST, AND PLASTIC AND METAL TRASH CONTAINERS.
- ALL PAINT CONTAINERS AND CURING COMPOUNDS WILL BE TIGHTLY SEALED AND STORED WHEN NOT REQUIRED FOR USE. EXCESS PAINT WILL NOT BE DISCHARGED TO THE STORM SYSTEM, BUT WILL BE PROPERLY DISPOSED ACCORDING TO THE MANUFACTURER'S INSTRUCTIONS.
- SANITARY WASTE WILL BE COLLECTED FROM PORTABLE UNITS A MINIMUM OF TWO TIMES A WEEK TO AVOID OVERFILLING. ALL SANITARY WASTE UNITS SHALL BE SURROUNDED BY SILT FENCE TO PREVENT CONTAMINANTS FROM LEAVING THE SITE. SILT FENCING SHALL BE INSPECTED ON A WEEKLY BASIS.
- ANY ASPHALT SUBSTANCES USED ON-SITE WILL BE APPLIED ACCORDING TO THE MANUFACTURER'S RECOMMENDATION.
- FERTILIZERS WILL BE STORED IN A COVERED SHED AND PARTIALLY USED BAGS WILL BE TRANSFERRED TO A SEALABLE BIN TO AVOID SPILLS AND WILL BE APPLIED ONLY IN THE MINIMUM AMOUNTS RECOMMENDED BY THE MANUFACTURER AND WORKED INTO THE SOIL TO LIMIT EXPOSURE TO STORMWATER.
- NO DISTURBED AREA SHALL BE LEFT UN-STABILIZED FOR LONGER THAN 14 DAYS DURING THE GROWING SEASON.
- WHEN EROSION IS LIKELY TO BE A PROBLEM, GRUBBING OPERATIONS SHALL BE SCHEDULED AND PERFORMED SUCH THAT GRADING OPERATIONS AND PERMANENT EROSION CONTROL FEATURES CAN FOLLOW WITHIN 24 HOURS THEREAFTER.
- AS WORK PROGRESSES, PATCH SEEDING SHALL BE DONE AS REQUIRED ON AREAS PREVIOUSLY TREATED TO MAINTAIN OR ESTABLISH PROTECTIVE COVER.
- DRAINAGE PIPES AND SWALES/DITCHES SHALL GENERALLY BE CONSTRUCTED IN A SEQUENCE FROM OUTLET TO INLET IN ORDER TO STABILIZE OUTLET AREAS AND DITCHES BEFORE WATER IS DIRECTED TO THE NEW INSTALLATION OR ANY PORTION THEREOF, UNLESS CONDITIONS UNIQUE TO THE LOCATION WARRANT AN ALTERNATIVE METHOD.

### SPILL CONTROL & SPILL RESPONSE:

- FOR ALL HAZARDOUS MATERIALS STORED ON SITE, THE MANUFACTURER'S RECOMMENDED METHODS FOR SPILL CLEAN UP WILL BE CLEARLY POSTED. SITE PERSONNEL WILL BE MADE AWARE OF THE PROCEDURES, AND THE LOCATIONS OF THE INFORMATION AND CLEANUP SUPPLIES.
- APPROPRIATE CLEANUP MATERIALS AND EQUIPMENT WILL BE MAINTAINED BY THE CONTRACTOR IN THE MATERIALS STORAGE AREA ON-SITE. AS APPROPRIATE, EQUIPMENT AND MATERIALS MAY INCLUDE ITEMS SUCH AS BOOMS, DUST PANS, MOPS, RAGS, GLOVES, GOGGLES, KITTY LITTER, SAND, SANDUST, AND PLASTIC AND METAL TRASH CONTAINERS SPECIFICALLY FOR CLEAN UP PURPOSES.
- ALL SPILLS WILL BE CLEANED IMMEDIATELY AFTER DISCOVERY AND THE MATERIALS DISPOSED OF PROPERLY.
- THE SPILL AREA WILL BE KEPT WELL VENTILATED AND PERSONNEL WILL WEAR APPROPRIATE PROTECTIVE CLOTHING TO PREVENT INJURY FROM CONTACT WITH A HAZARDOUS SUBSTANCE.
- AFTER A SPILL, A REPORT WILL BE PREPARED DESCRIBING THE SPILL, WHAT CAUSED IT, AND THE CLEANUP MEASURES TAKEN. THE SPILL PREVENTION PLAN WILL BE ADJUSTED TO INCLUDE MEASURES TO PREVENT THIS TYPE OF SPILL FROM REOCCURRING, AS WELL AS CLEAN UP INSTRUCTIONS IN THE EVENT OF REOCCURRENCES.
- THE CONTRACTOR'S SITE SUPERINTENDENT, RESPONSIBLE FOR DAY-TO-DAY OPERATIONS, WILL BE THE SITE PREVENTION AND CLEANUP COORDINATOR. THE CONTRACTOR IS RESPONSIBLE FOR ENSURING THAT THE SITE SUPERINTENDENT HAS HAD APPROPRIATE TRAINING FOR HAZARDOUS MATERIALS HANDLING, SPILL MANAGEMENT, AND CLEANUP.
- THE CONTRACTOR'S SITE SUPERINTENDENT WILL BE NOTIFIED IMMEDIATELY WHEN A SPILL OR THE THREAT OF A SPILL IS OBSERVED. THE SUPERINTENDENT WILL ASSESS THE SITUATION AND DETERMINE THE APPROPRIATE RESPONSE.
- IF SPILLS REPRESENT AN IMMINENT THREAT OF ESCAPING EROSION AND SEDIMENT CONTROLS AND ENTERING RECEIVING WATERS, PERSONNEL WILL BE DIRECTED TO RESPOND IMMEDIATELY TO CONTAIN THE RELEASE AND NOTIFY THE SUPERINTENDENT AFTER THE SITUATION HAS BEEN STABILIZED.

ANY ALTERATIONS OR REVISIONS OF THESE PLANS, UNLESS DONE BY OR UNDER THE DIRECTION OF THE NYS LICENSED AND REGISTERED ENGINEER THAT PREPARED THEM, IS A VIOLATION OF THE NYS EDUCATION LAW.

- SPILL KITS CONTAINING APPROPRIATE MATERIALS AND EQUIPMENT FOR SPILL RESPONSE AND CLEANUP WILL BE MAINTAINED BY THE CONTRACTOR AT THE SITE.
- IF OIL SHEEN IS OBSERVED ON SURFACE WATER, ACTION WILL BE TAKEN IMMEDIATELY TO REMOVE THE MATERIAL CAUSING THE SHEEN. THE CONTRACTOR WILL USE APPROPRIATE MATERIALS TO CONTAIN AND ABSORB THE SPILL. THE SOURCE OF THE OIL SHEEN WILL ALSO BE IDENTIFIED AND REMOVED OR REPAIRED AS NECESSARY TO PREVENT FURTHER RELEASES.
- IF A SPILL OCCURS THE SUPERINTENDENT OR THE SUPERINTENDENT'S DESIGNEE WILL BE RESPONSIBLE FOR COMPLETING THE SPILL REPORTING FORM AND FOR REPORTING THE SPILL TO THE CONTACTS LISTED BELOW.
- PERSONNEL WITH PRIMARY RESPONSIBILITY FOR SPILL RESPONSE AND CLEAN UP WILL RECEIVE TRAINING BY THE CONTRACTOR'S SITE SUPERINTENDENT OR DESIGNEE. THE TRAINING MUST INCLUDE IDENTIFYING THE LOCATION OF THE SPILL KITS AND OTHER SPILL RESPONSE EQUIPMENT AND THE USE OF SPILL RESPONSE MATERIALS.
- SPILL RESPONSE EQUIPMENT WILL BE INSPECTED AND MAINTAINED AS NECESSARY TO REPLACE ANY MATERIALS USED IN SPILL RESPONSE ACTIVITIES.

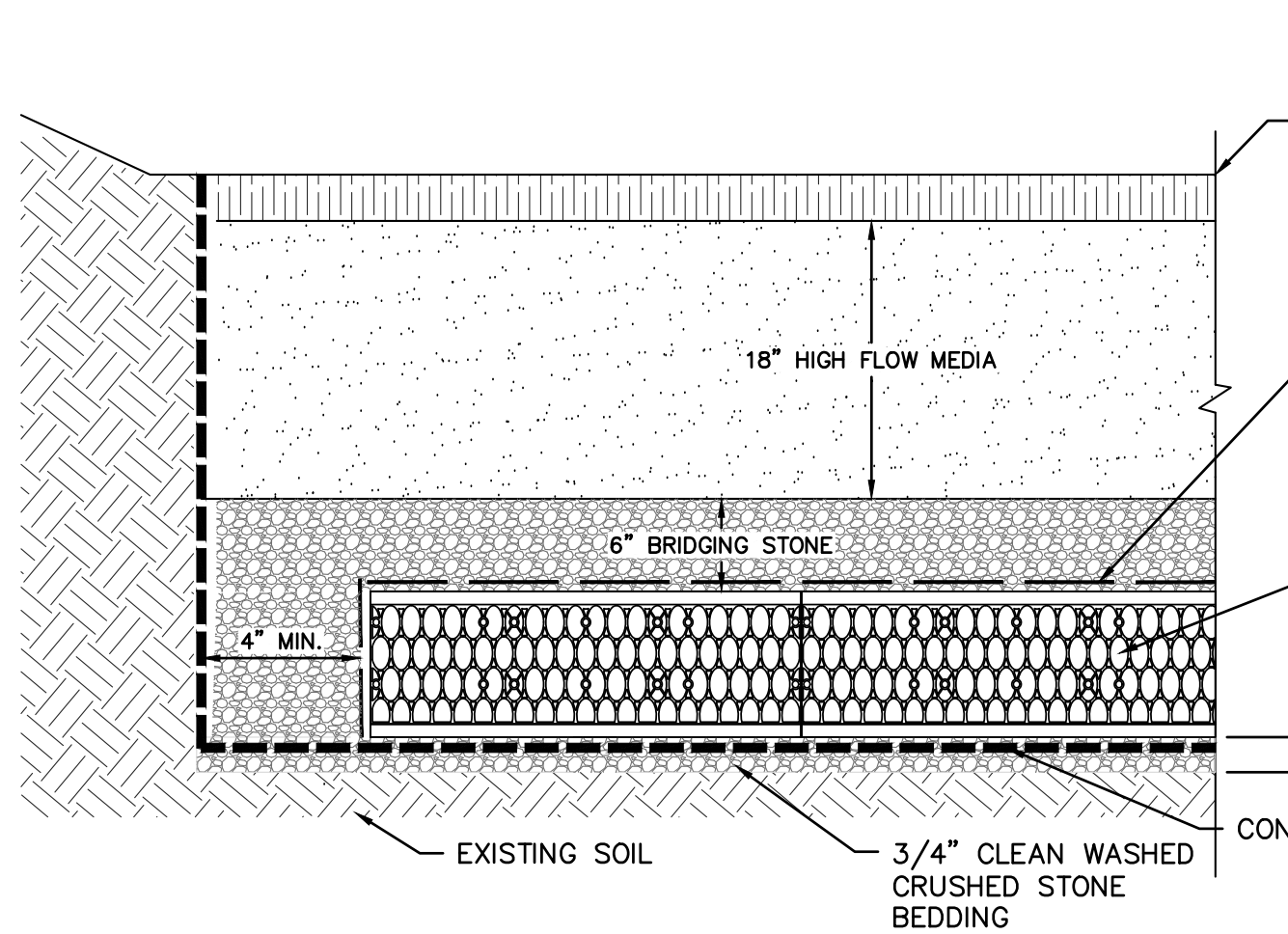
### SPILL CONTROL NOTIFICATION:

- A REPORTABLE SPILL IS A QUANTITY OF FIVE (5) GALLONS OR MORE OF ANY SPILL OF OIL WHICH: (1) VIOLATES WATER QUALITY STANDARDS, (2) PRODUCES A SHEEN ON A SURFACE WATER, OR (3) CAUSES A SLUDGE OR EMULSION. THIS SPILL MUST BE REPORTED IMMEDIATELY TO THE AGENCIES LISTED BELOW.
- ANY SPILL OF OIL OR HAZARDOUS SUBSTANCE TO WATERS OF THE STATE MUST BE REPORTED IMMEDIATELY BY TELEPHONE TO THE FOLLOWING AGENCIES:
  - 911 - POLICE, FIRE AND EMS
  - VILLAGE OF MAMARONECK ENGINEERING DEPARTMENT
  - 169 MOUNT PLEASANT AVENUE
  - MAMARONECK, NY 10543
  - PHONE: (914) 777-7731
  - VILLAGE OF MAMARONECK FIRE DEPARTMENT
  - 123 MAMARONECK AVENUE
  - MAMARONECK, NY 10543
  - PHONE: (914) 825-8777
  - NYS DEPARTMENT OF ENVIRONMENTAL CONSERVATION (NYSDEC)
  - SPILL REPORTING HOTLINE
  - (800) 457-7362
  - NATIONAL RESPONSE CENTER: (800) 424-8802
  - LOCAL EMERGENCY PLANNING COMMITTEE (LEPC)
  - WESTCHESTER COUNTY OFFICE OF EMERGENCY MANAGEMENT
  - 200 BROADHURST AVENUE
  - HAWTHORNE, NY 10532
  - (914) 864-5450
  - WESTCHESTER COUNTY DEPARTMENT OF HEALTH (WCOH)
  - SPILL REPORTING HOTLINE
  - (914) 813-5000
  - U.S. ENVIRONMENTAL PROTECTION AGENCY (USEPA)
  - EPORA INFORMATION HOTLINE
  - (800) 535-0202
  - U.S. DEPARTMENT OF LABOR AND OCCUPATIONAL SAFETY AND HEALTH ADMINISTRATION (OSHA)
  - THIRYFOWN, NY
  - (914) 524-7510

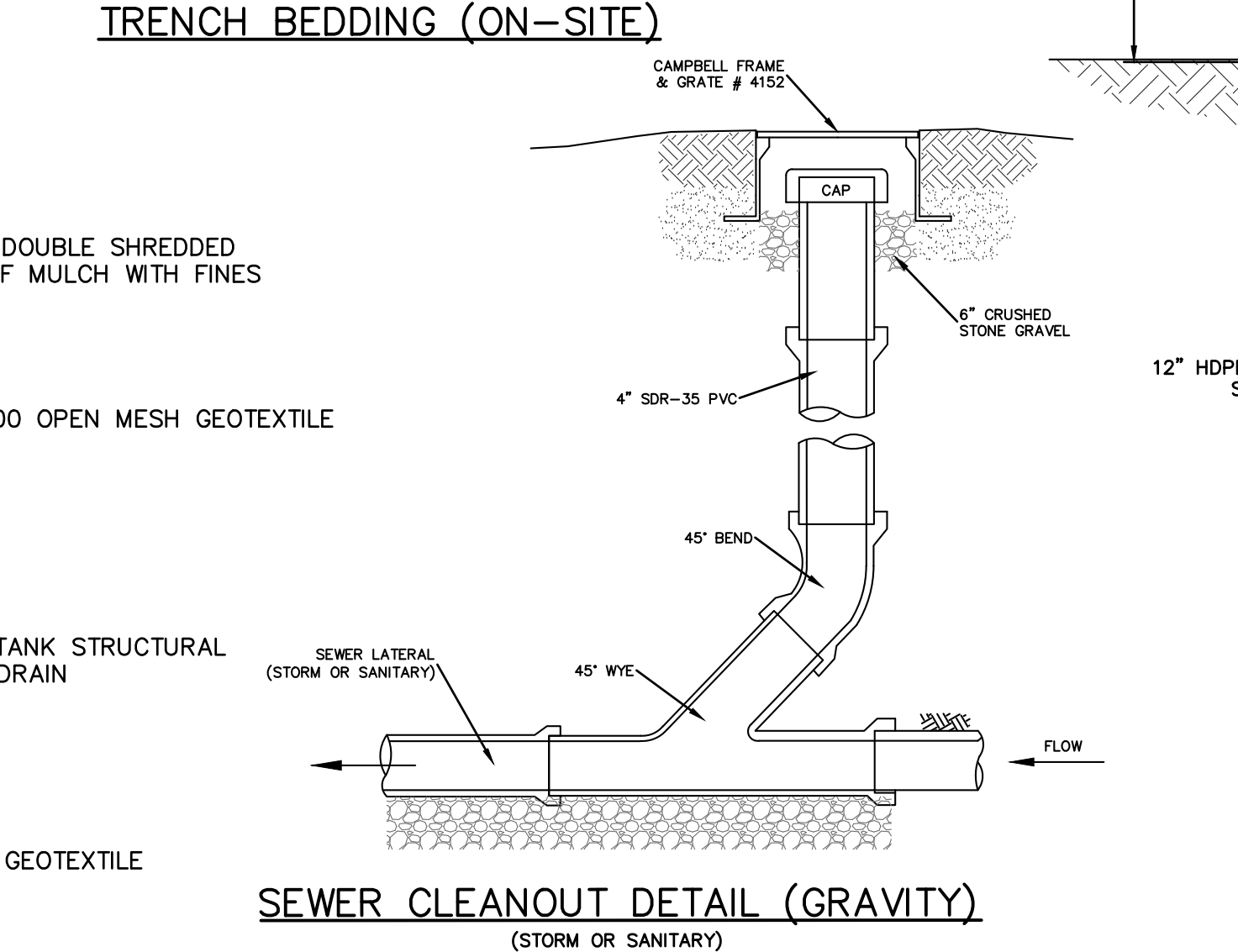
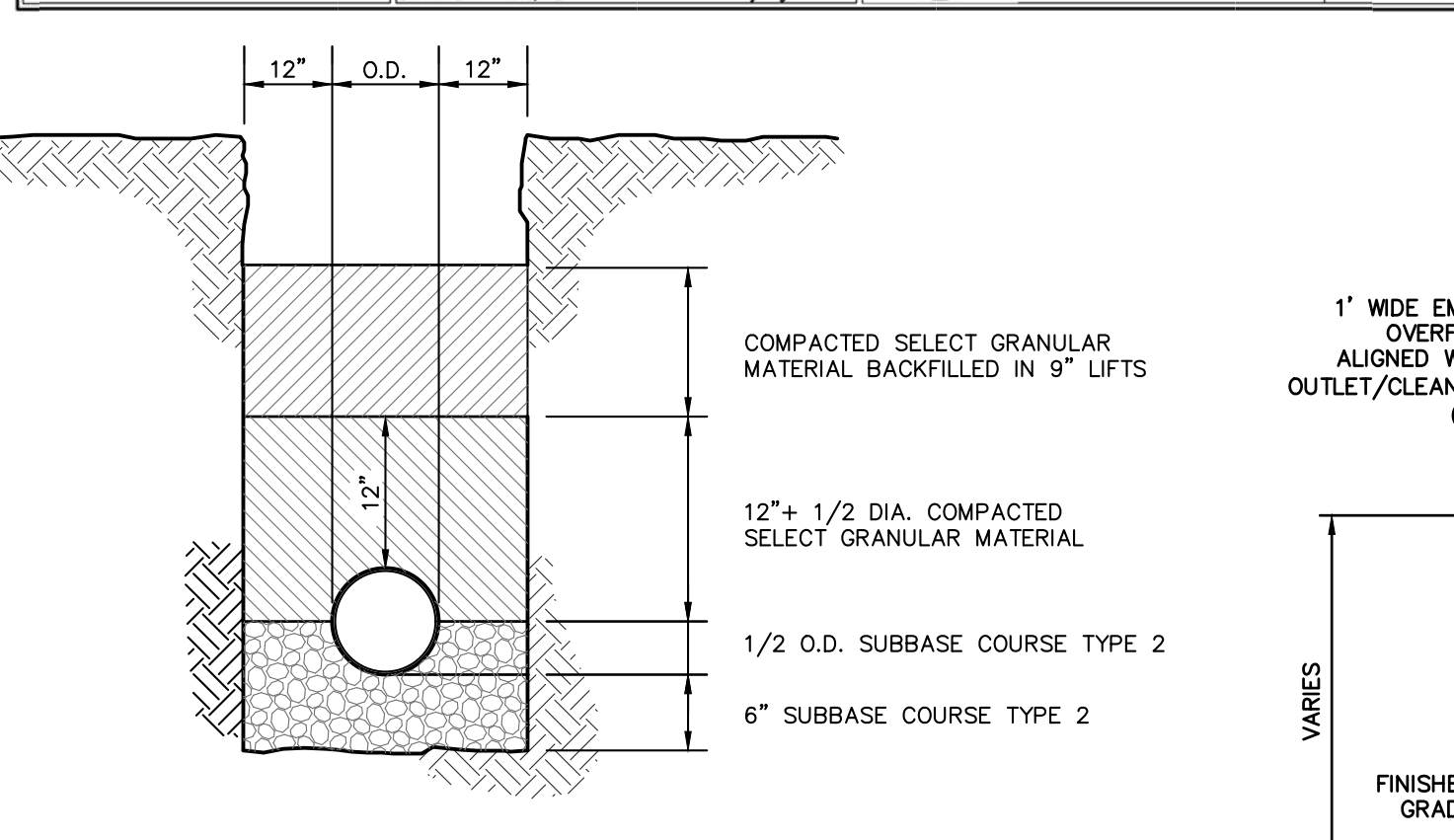
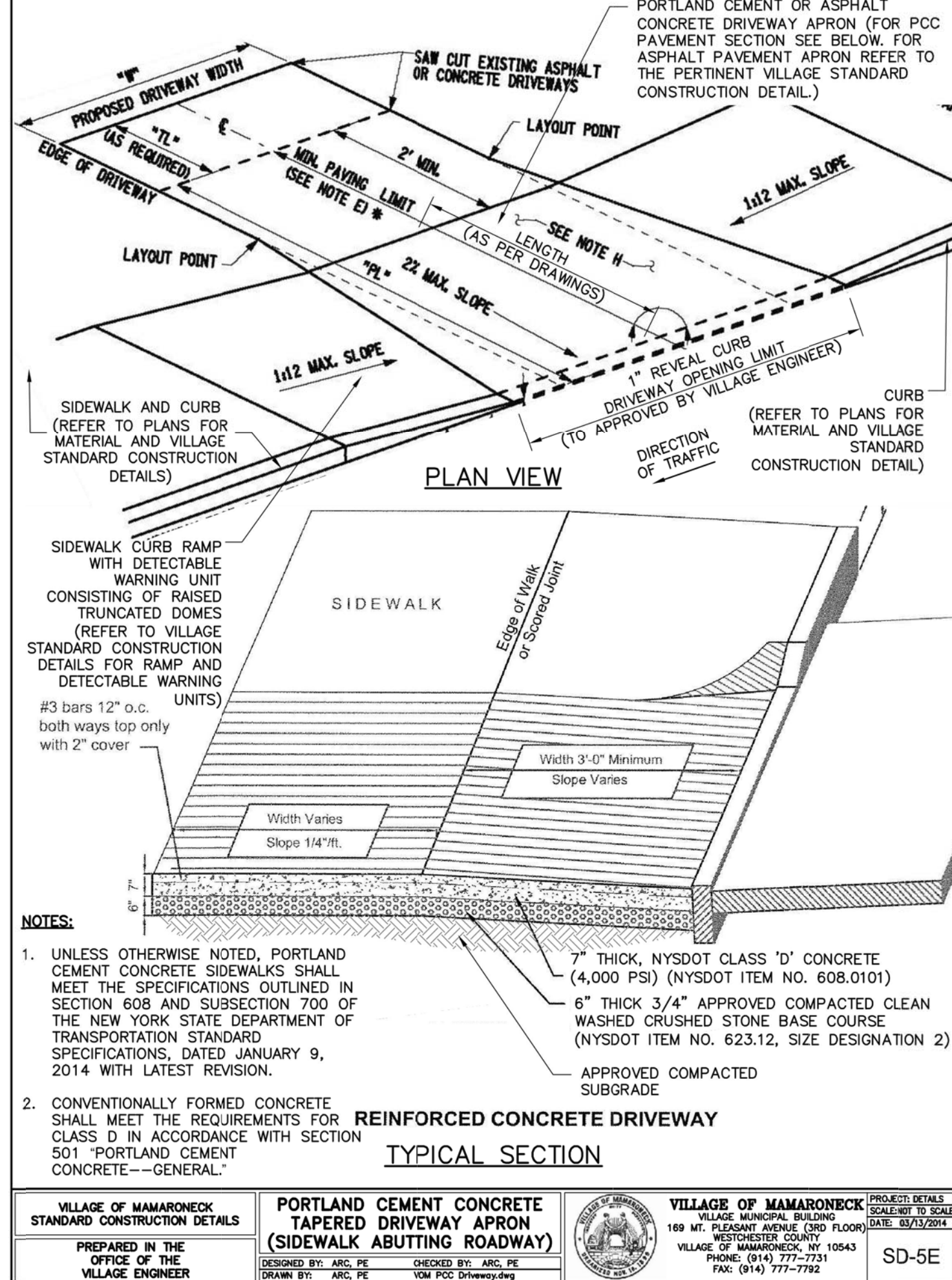
## STORMWATER MANAGEMENT FACILITIES MAINTENANCE PROGRAM

MEASURE	DATES FOR INSPECTION	TIMING, ACTIVITY, AND LOCATION
GENERAL MAINTENANCE (STORM SEWER, CATCH BASINS/ DRAIN INLETS, MANHOLES, PRE-TREATMENT DEVICE AND INFILTRATION BASIN)	ALL	ALL STORMWATER FACILITIES SHALL BE INSPECTED IMMEDIATELY AFTER COMPLETION OF CONSTRUCTION, AND THEN MONTHLY FOR THE FIRST THREE (3) MONTHS FOLLOWING THE COMPLETION OF THE PROJECT. WITHIN THE FIRST THREE (3) MONTHS, INSPECTIONS SHALL IMMEDIATELY BE PERFORMED FOLLOWING A LARGE STORM EVENT (I.E. PRODUCING 1/2" (ONE-HALF INCH) OF RAIN OR GREATER. THEREAFTER, THESE FACILITIES SHALL BE INSPECTED AS DESCRIBED AS FOLLOWS. UPON INSPECTION, FACILITIES SHALL BE IMMEDIATELY MAINTAINED AND/OR CLEANED AS MAY BE REQUIRED. ANY SITE AREAS EXHIBITING SOIL EROSION OF ANY KIND SHALL BE IMMEDIATELY RESTORED AND STABILIZED WITH VEGETATION, MULCH OR STONE, DEPENDING ON THE AREA TO BE STABILIZED. UPON EACH INSPECTION, ALL VISIBLE DEBRIS INCLUDING, BUT NOT LIMITED TO, TWIGS, LEAF AND FOREST LITTER SHALL BE REMOVED FROM THE BASIN, OVERFLOW DISCHARGE POINTS AND FRAMES AND GRATES OF DRAINAGE STRUCTURES.
SUMPS - CATCH BASIN/ DRAIN INLETS AND DRAIN MANHOLES	UPON COMPLETION OF CONSTRUCTION:  -ONCE A MONTH FOR THE FIRST THREE (3) MONTHS  AFTER FIRST THREE (3) MONTHS:  -EVERY FOUR (4) MONTHS THEREAFTER	ALL CATCH BASIN/DRAIN INLETS AND DRAIN MANHOLES WITH SUMPS HAVE BEEN DESIGNED TO TRAP SEDIMENT PRIOR TO ITS TRANSPORT TO THE INFILTRATION PRACTICE AND, ULTIMATELY, DOWNSTREAM. THESE SUMPS WILL REQUIRE PERIODIC INSPECTION AND MAINTENANCE TO ENSURE THAT ADEQUATE DEPTH IS MAINTAINED WITHIN THE SUMPS. THE OWNER, OR THEIR DULY AUTHORIZED REPRESENTATIVE, SHALL TAKE MEASUREMENTS OF THE SUMP DEPTH.  IF SEDIMENT HAS ACCUMULATED TO 1/2 (ONE-HALF) THE DEPTH OF THE SUMP, ALL SEDIMENT SHALL BE REMOVED FROM THE SUMP. SEDIMENTS CAN BE REMOVED WITH HAND-LABOR OR WITH A VACUUM TRUCK.  THE USE OF ROAD SALT SHALL BE MINIMIZED FOR MAINTENANCE OF ROADWAY AND DRIVEWAY AREAS.
EXISTING HYDRODYNAMIC SEPARATOR	UPON COMPLETION OF CONSTRUCTION:  -QUARTERLY FOR FIRST YEAR  AFTER FIRST YEAR:  -EVERY SIX (6) MONTHS THEREAFTER (SPRING & FALL)	THE HYDRODYNAMIC SEPARATOR DEVICE LOCATED IMMEDIATELY UPSTREAM OF THE OUTFALL SHALL BE MAINTAINED DURING DRY WEATHER CONDITIONS. ANY ACCUMULATED SEDIMENTS SHALL BE VACUUMED OUT WHEN SEDIMENT HAS REACHED 1/2 (ONE-HALF) THE CAPACITY OF THE ISOLATED SUMP, OR WHEN AN APPRECIABLE LEVEL OF HYDROCARBONS AND TRASH HAS ACCUMULATED, WHICHEVER OCCURS FIRST.  WHEN THE SEDIMENT PILE IS WITHIN 30 TO 36 INCHES OF THE WATER SURFACE, THE SYSTEM SHOULD BE MAINTAINED. A VACUUM TRUCK SHALL BE USED TO REMOVE THE ACCUMULATED SEDIMENT AND DEBRIS. REFER TO MANUFACTURER'S LITERATURE FOR DETAILED MAINTENANCE INSTRUCTIONS.
STORMWATER PLANTER	UPON COMPLETION OF CONSTRUCTION:  -TWICE IN THE FIRST SIX (6) MONTHS & AFTER EACH STORM EVENT GREATER THAN 0.5-INCHES  AFTER FIRST YEAR:  -EVERY FOUR (4) MONTHS THEREAFTER & AFTER STORM EVENTS GREATER THAN THE 1-YEAR STORM	ROUTINE MAINTENANCE ACTIVITIES INCLUDE PRUNING AND REPLACING DEAD OR DYING VEGETATION, PLANT THINNING, AND EROSION REPAIR. SINCE STORMWATER PLANTERS ARE NOT TYPICALLY PRECEDED BY PRE-TREATMENT PRACTICES, THE SOIL SURFACE SHOULD BE INSPECTED FOR EVIDENCE OF SEDIMENT BUILD-UP FROM THE CONNECTED IMPERVIOUS SURFACE AND FOR SURFACE PONDING. ATTENTION SHOULD BE PAID TO ADDITIONAL SEASONAL MAINTENANCE NEEDS AS WELL AS THE FIRST GROWING SEASON.

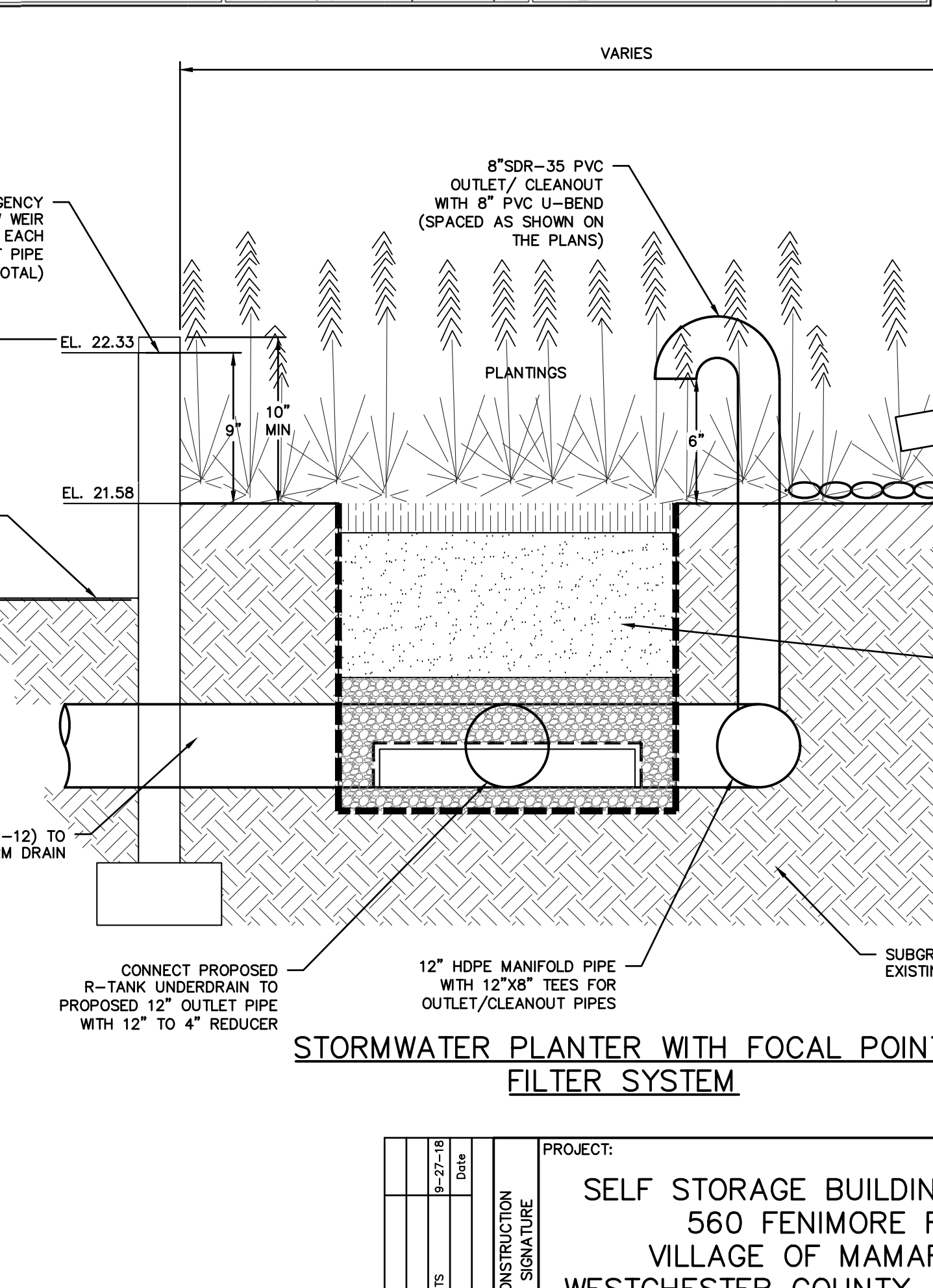
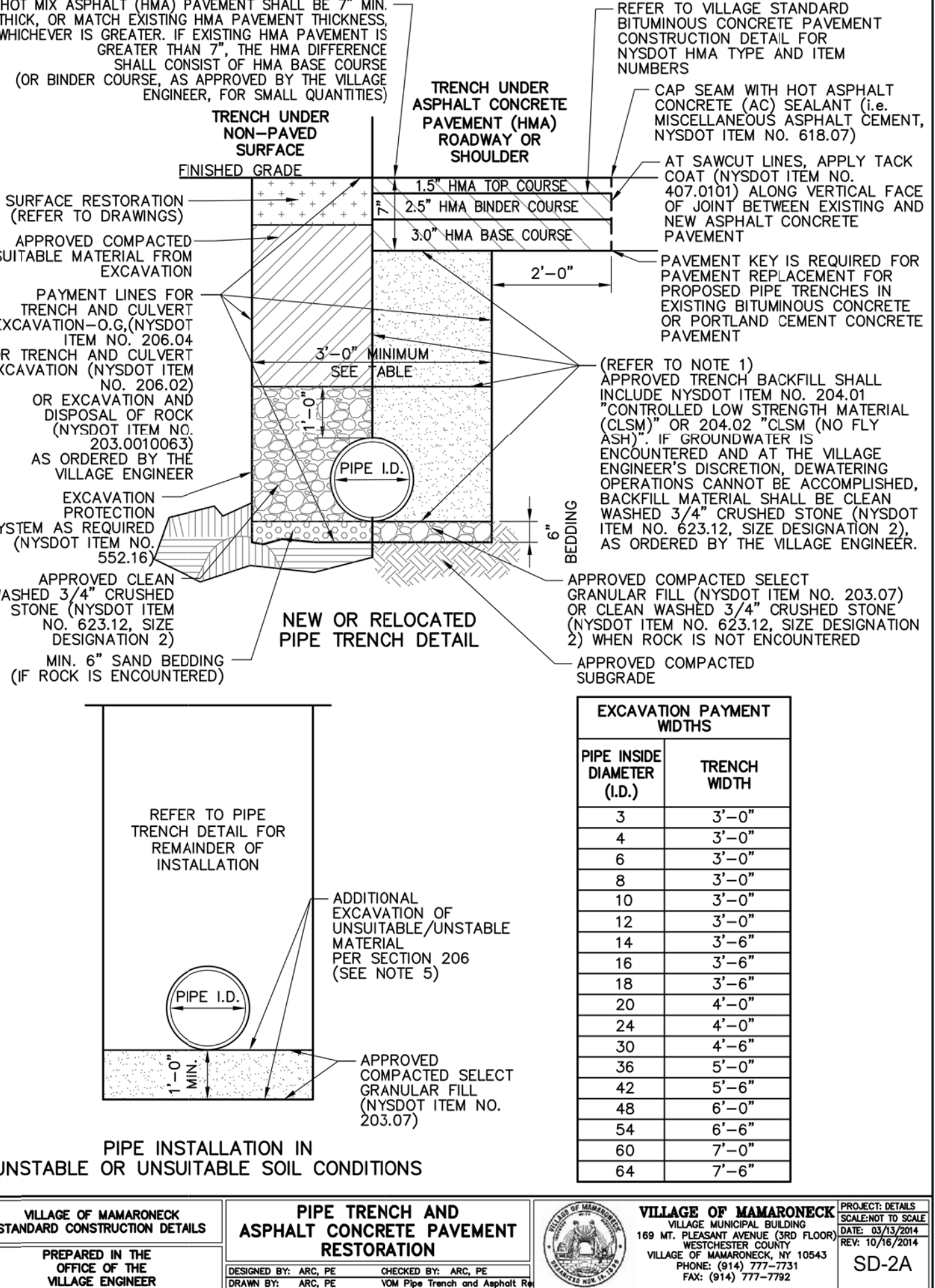
- DURING CONSTRUCTION, THE PARTY RESPONSIBLE FOR IMPLEMENTING THE TEMPORARY (DURING CONSTRUCTION) STORMWATER MANAGEMENT FACILITIES MAINTENANCE PROGRAM WILL BE THE CONTRACTOR. THE NAME AND CONTACT INFORMATION WILL BE FILED WITH THE TOWN OF YORKTOWN AND THE NYSDEC AT THE TIME OF THE PRE-CONSTRUCTION MEETING. THE PERMANENT MAINTENANCE PROGRAM FOR ALL NEW STORMWATER MANAGEMENT FACILITIES WILL BE MANAGED BY THE INDIVIDUAL HOMEOWNERS UPON COMPLETION OF CONSTRUCTION AND ACCEPTANCE OF THE IMPROVEMENTS.



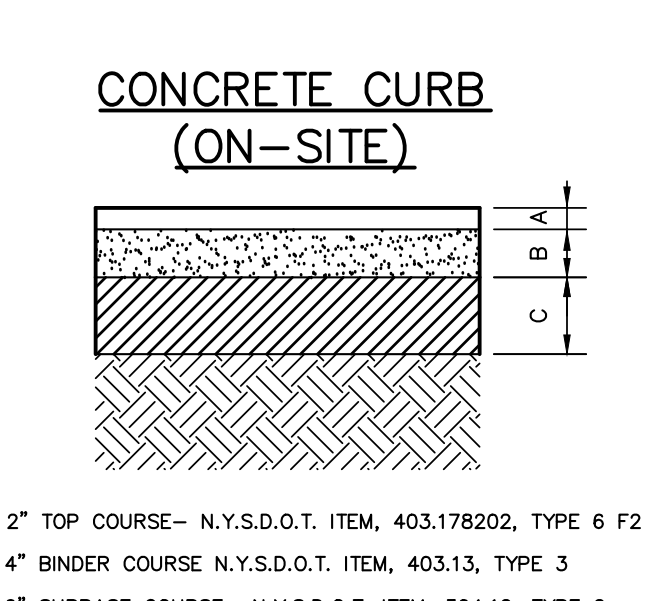
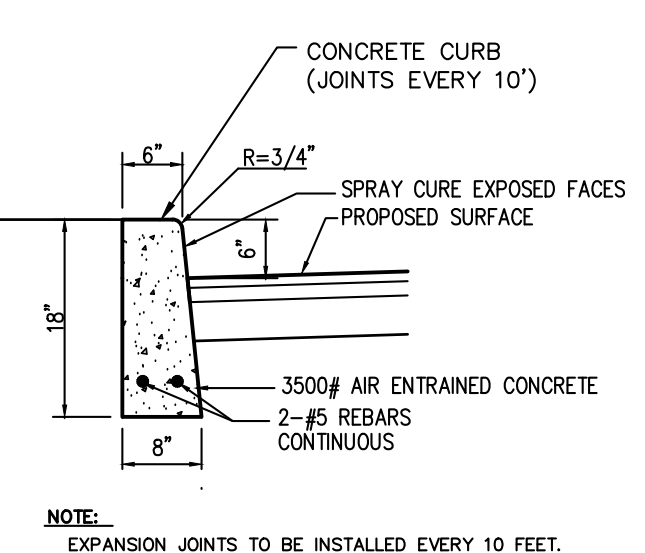
## FOCALPOINT FILTER



- NOTES (SANITARY SEWER SERVICES):
- ALL SANITARY SEWER SERVICES TO BE 4" SDR-35 @ 1.0% MINIMUM. IN ACCORDANCE WITH THE NYS RESIDENTIAL BUILDING CODE, THE FOLLOWING REQUIREMENTS APPLY:
    - A. CLEANOUTS SHALL BE INSTALLED NOT MORE THAN 100 FEET APART IN HORIZONTAL DRAINAGE LINES (P3005.2.2).
    - B. CLEANOUTS SHALL BE INSTALLED AT EACH CHANGE OF DIRECTION OF THE DRAINAGE SYSTEM GREATER THAN 45 DEGREES.
    - C. CLEANOUTS SHALL BE INSTALLED SO THAT THE CLEANOUT OPENS TO ALLOW CLEANING IN THE DIRECTION OF THE FLOW OF THE DRAINAGE LINE (P3005.2.8).
  - REFER TO PLAN FOR SPECIFIC PIPE SIZING AND SLOPE SPECIFICATIONS; HOWEVER, IN GENERAL, ALL STORM SEWER SERVICES TO BE 6" SDR-35 @ 1.0% MINIMUM. CLEANOUTS SHALL BE PLACED BEFORE SIGNIFICANT PIPE BEND LOCATIONS (I.E., JUNCTIONS, 90-DEGREE BENDS, ETC.) UNLESS A ROOF LEADER DOWNSPOUT CONNECTION IS PROPOSED.



- NOTES (STORM SEWER):
- REFER TO PLAN FOR SPECIFIC PIPE SIZING AND SLOPE SPECIFICATIONS; HOWEVER, IN GENERAL, ALL STORM SEWER SERVICES TO BE 6" SDR-35 @ 1.0% MINIMUM. CLEANOUTS SHALL BE PLACED BEFORE SIGNIFICANT PIPE BEND LOCATIONS (I.E., JUNCTIONS, 90-DEGREE BENDS, ETC.) UNLESS A ROOF LEADER DOWNSPOUT CONNECTION IS PROPOSED.



## CONCRETE CURB (ON-SITE)

## PAVEMENT SECTION (ON-SITE)

A- 2" TOP COURSE- N.Y.S.D.O.T. ITEM, 403.178202, TYPE 6 F2

B- 4" BINDER COURSE- N.Y.S.D.O.T. ITEM, 403.13, TYPE 3

C- 6" SUBBASE COURSE- N.Y.S.D.O.T. ITEM, 304.12, TYPE 2

PROJECT:  
**SELF STORAGE BUILDING ADDITION  
560 FENIMORE ROAD  
VILLAGE OF MAMARONECK  
WESTCHESTER COUNTY - NEW YORK**

**REVISIONS**

NO.	DATE	DESCRIPTION
1	2/8/18	DATE

**THIS PLAN IS NOT VALID FOR CONSTRUCTION WITHOUT ENGINEERS SEAL & SIGNATURE**

**DATE: 2/8/18**  
**DESIGNED BY: D.C.**  
**CHECKED BY: M.S.**  
**SHEET NO. 7**

**STATE OF NEW YORK**  
**REGISTERED PROFESSIONAL ENGINEER**  
**NO. 00851**

**HUDSON ENGINEERING CONSULTING, P.C.**  
45 Knollwood Road - Suite 201  
Elmsford, New York 10523  
T: 914-903-0420  
F: 914-560-2086  
© 2018