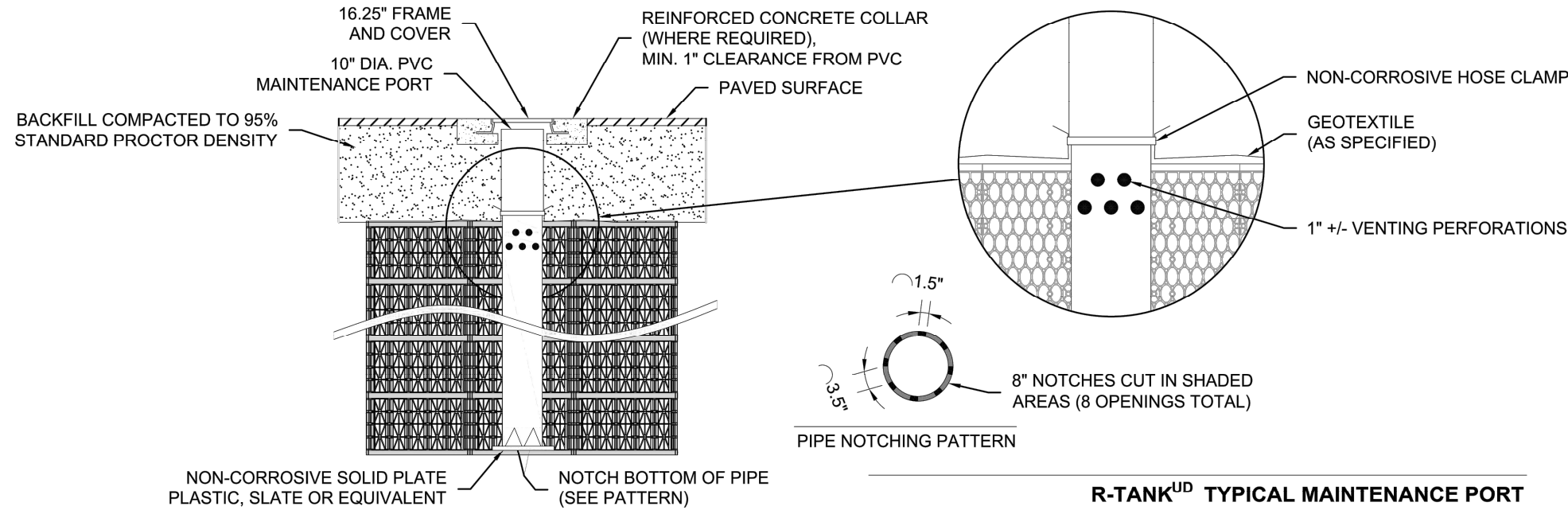
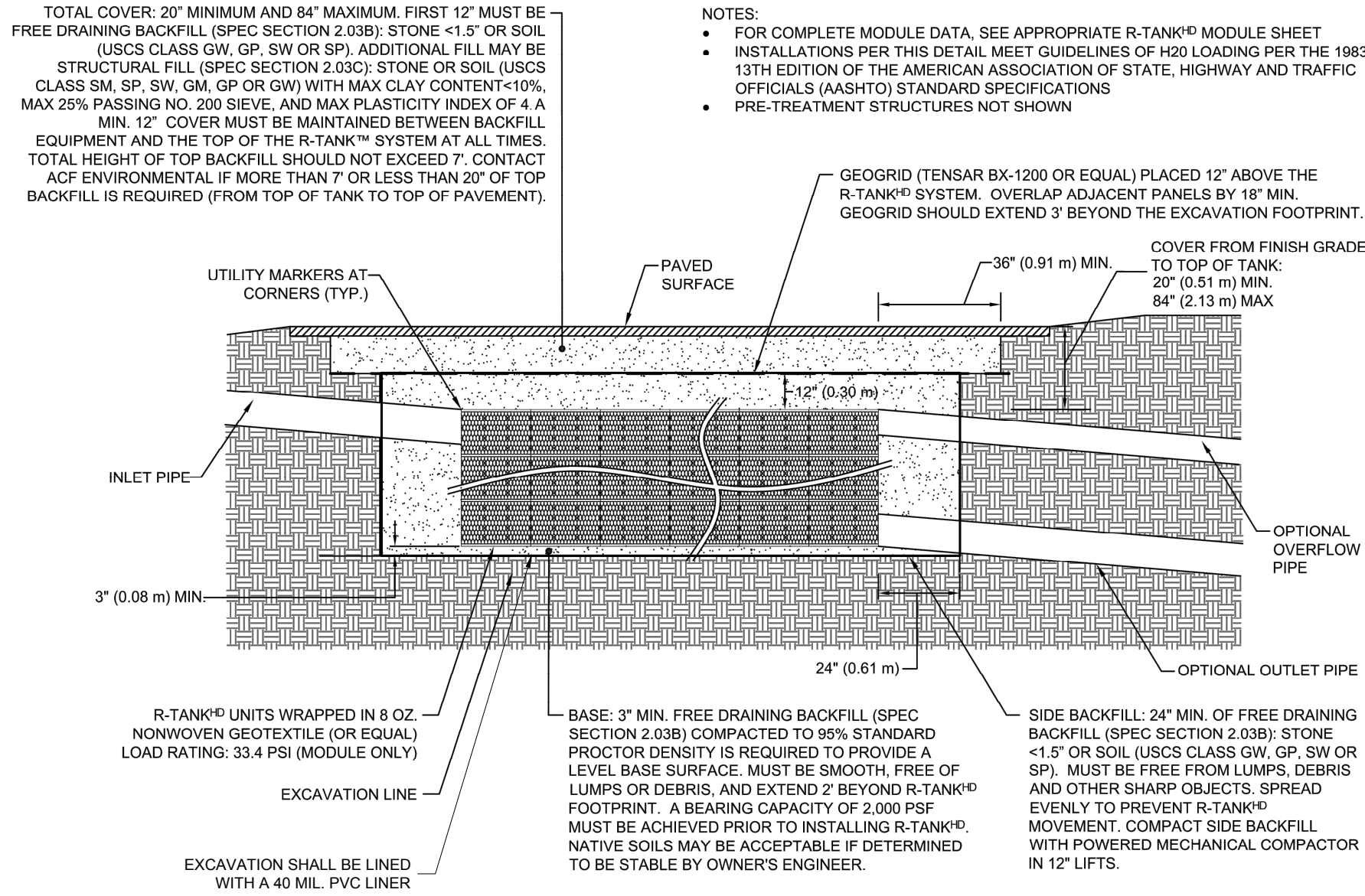


HS 20 Load



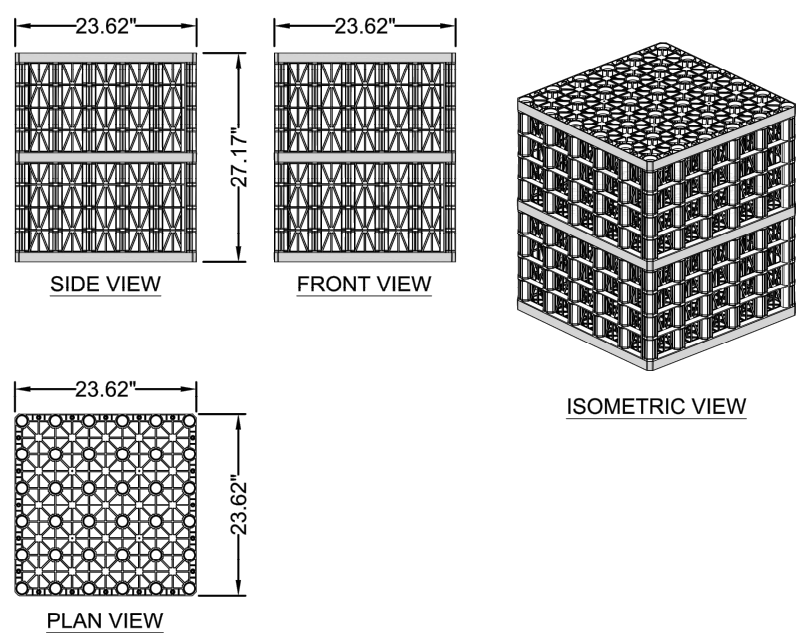
- NOTES
- THIS PORT IS USED TO PUMP WATER INTO THE SYSTEM AND RE-SUSPEND ACCUMULATED SEDIMENT SO THAT IT MAY BE PUMPED OUT.
 - MINIMUM REQUIRED MAINTENANCE INCLUDES A QUARTERLY INSPECTION DURING THE FIRST YEAR OF OPERATION AND A YEARLY INSPECTION THEREAFTER. FLUSH AS NEEDED.
 - SEE TRAFFIC LOADING DETAIL FOR MINIMUM & MAXIMUM COVER REQUIREMENTS.
 - IF MAINTENANCE PORT IS LOCATED IN A NON-TRAFFIC AREA, A PLASTIC CAP CAN BE USED IN LEU OF A FRAME AND COVER WITH CONCRETE COLLAR.

R-TANK & H-20 LOAD – SECTION VIEW

23

R-TANK TYPICAL MAINTENANCE PORT

24



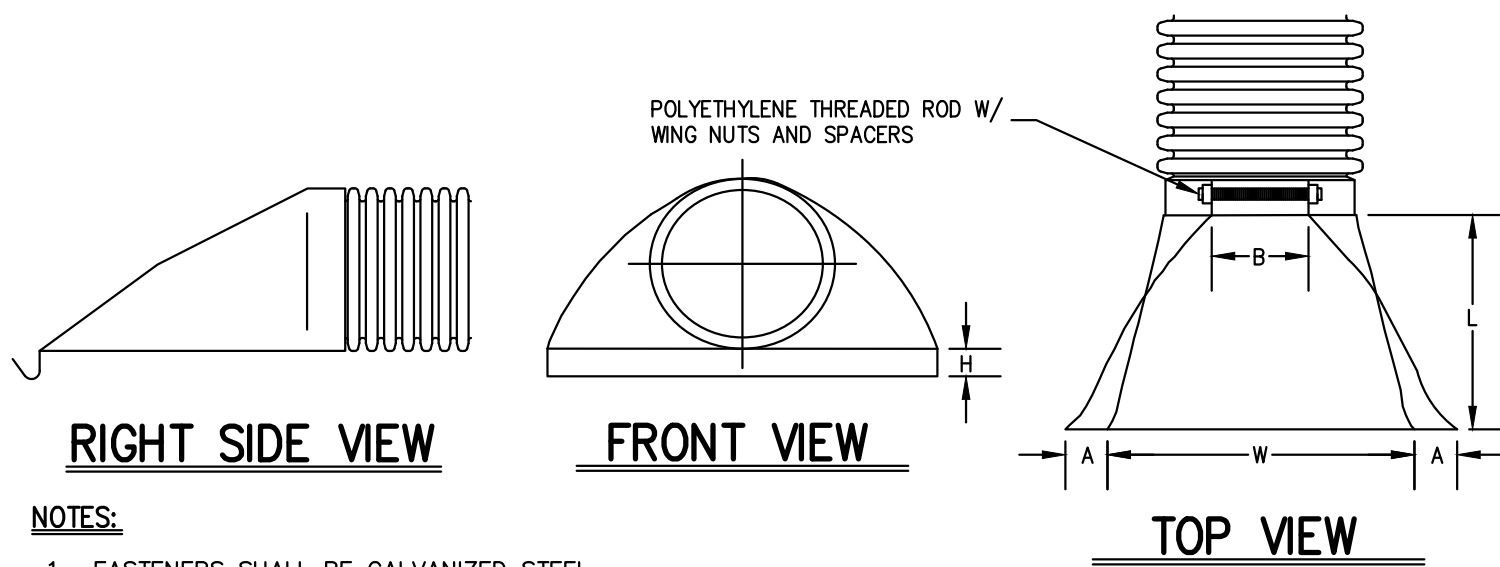
MODULE DATA

GEOMETRY:
LENGTH = 23.62 IN. (600 MM)
WIDTH = 23.62 IN. (600 MM)
HEIGHT = 27.17 IN. (690 MM)
TANK VOLUME = 8.77 CF
STORAGE VOLUME = 8.33 CF
VOID INTERNAL VOLUME: 95%
VOID SURFACE AREA: 90%

LOAD RATING:
134.2 PSI. (MODULE ONLY)
HS20. (WITH ACF COVER SYSTEM)

MATERIAL:
100% RECYCLED POLYPROPYLENE

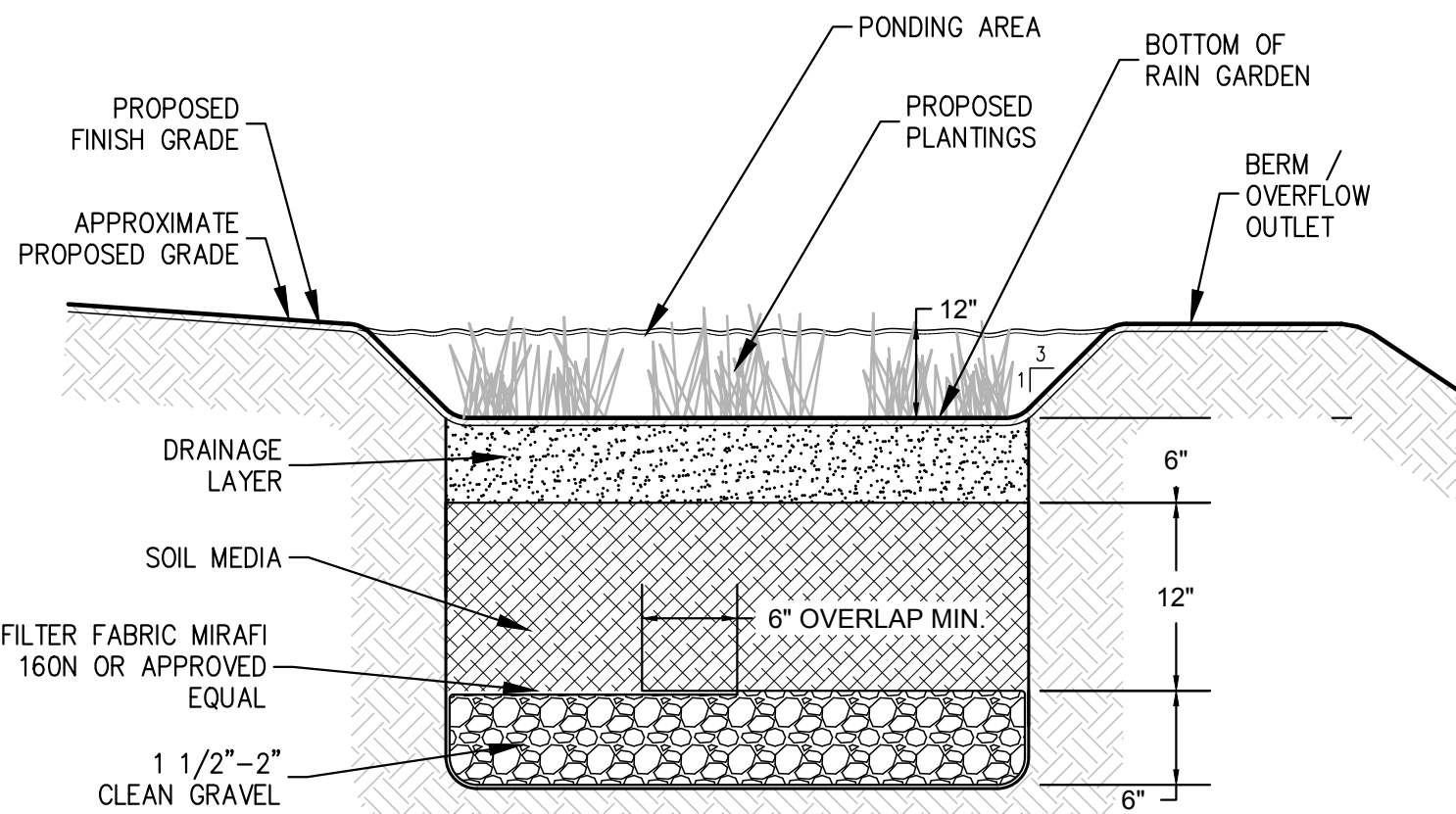
DOUBLE R-TANK® - MODULE DETAIL



NOTES:

- FASTENERS SHALL BE GALVANIZED STEEL.
- ALL DIMENSIONS ARE NOMINAL.

PIPE SIZE	A	B (MAX.)	H	L	W
12"	6.5"	10.0"	6.5"	25.0"	29.0"



NOTES:

- ESTABLISH AN ATTRACTIVE PLANTING BED WITH A MIX OF UPLAND AND WETLAND NATIVE SHRUBS, GRASSES AND HERBACEOUS PLANT MATERIAL ARRANGED IN A NATURAL CONFIGURATION STARTING FROM THE MORE UPLAND SPECIES AT THE OUTERMOST ZONE OF THE SYSTEM TO MORE WETLAND SPECIES AT THE INNERMOST ZONE. PLANTS SHALL BE CONTAINER-GROWN WITH WELL ESTABLISHED ROOT SYSTEM, PLANTED ON ONE-FOOT CENTERS.
- RAIN GARDENS SHALL NOT BE SEEDDED AS THIS TAKES TOO LONG TO ESTABLISH THE DESIRED ROOT SYSTEM, AND SEED MAY BE FLOATED OUT WITH RAIN EVENTS. SHREDDED HARDWOOD MULCH SHOULD BE APPLIED UP TO 2" TO HELP KEEP SOIL IN PLACE.

DOUBLE R-TANK MODULE DETAIL

25

PLASTIC END SECTION

26

RAIN GARDEN CROSS SECTION

27

JMC Planning, Engineering, Landscape
Architecture & Land Surveying, PLLC
JMC Site Development Consultants, LLC

Join Meyer Consulting, Inc.

120 BEDFORD ROAD • ARMONK, NY 10504
voice 914.273.5225 • fax 914.273.2102

www.jmcplic.com

JMC

CONSTRUCTION DETAILS

RESIDENTIAL DEVELOPMENT
1165 GREACEN POINT ROAD
MAMARONECK, NY, 10543

ANY ALTERATION OF PLANS, SPECIFICATIONS, PLATS AND REPORTS BEARING THE SEAL OF A LICENSED PROFESSIONAL ENGINEER OR LICENSED LAND SURVEYOR IS A VIOLATION OF SECTION 7209 OF THE NEW YORK STATE EDUCATION LAW, EXCEPT AS PROVIDED FOR BY SECTION 7209, SUBSECTION 2.

Drawn: RAR Approved: JAR
Scale: NOT TO SCALE
Date: 07/24/2018
Project No: 18100
18100-DEIMS C-903 -
Drawing No:

C-903