



Aqua-Swirl[®]

Stormwater Treatment System

Inspection and Maintenance Manual



AquaShield[™], Inc.
2733 Kanasita Drive
Suite 111
Chattanooga, TN 37343
Toll free (888) 344-9044
Phone: (423) 870-8888
Fax: (423) 826-2112
Email: info@aquashieldinc.com
www.aquashieldinc.com

March 2014

Table of Contents

	<u>Page(s)</u>
• AquaShield™ Stormwater Treatment Systems	3
• Aqua-Swirl® Stormwater Treatment System	4 – 9
• Inspection and Maintenance Worksheets and Attachments	10 – 13
• Aqua-Swirl® Tabular Maintenance Schedule	14

AquaShield™, Inc.
2733 Kanasita Drive
Suite 111
Chattanooga, Tennessee 37343
Toll free (888) 344-9044
Fax (423) 870-2112
www.aquashieldinc.com



AquaShield™, Inc

Stormwater Treatment Solutions

The highest priority of AquaShield™, Inc. (AquaShield™) is to protect waterways by providing stormwater treatment solutions to businesses across the world. These solutions have a reliable foundation based on over 20 years of water treatment experience.

Local regulators, engineers, and contractors have praised the AquaShield™ systems for their simple design and ease of installation. All the systems are fabricated from high performance, durable and lightweight materials. Contractors prefer the quick and simple installation of our structures that saves them money.

The patented line of AquaShield™ stormwater treatment products that provide high levels of stormwater treatment include the following:

- **Aqua-Swirl® Stormwater Treatment System:** hydrodynamic separator, which provides a highly effective means for the removal of sediment, floating debris and free-oil.
- **Aqua-Filter™ Stormwater Filtration System:** treatment train stormwater filtration system capable of removing gross contaminants, fine sediments, waterborne hydrocarbons, heavy metals and total phosphorous.



**Aqua-Swirl® Stormwater
Treatment System**



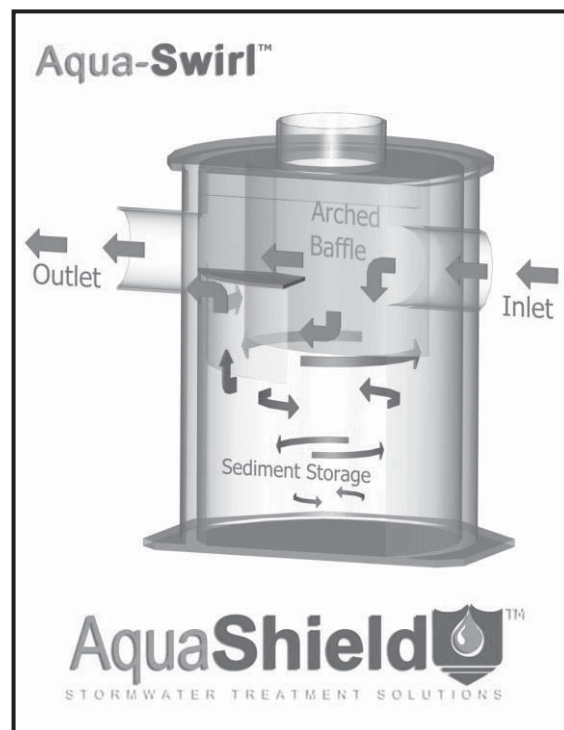
**Aqua-Filter™ Stormwater
Filtration System**



Aqua-Swirl[®] Stormwater Treatment System

The patented Aqua-Swirl[®] Stormwater Treatment System is a single chamber hydrodynamic separator which provides a highly effective means for the removal of sediment, free oil, and floating debris. Both treatment and storage are accomplished in the swirl chamber without the use of multiple or “blind” chambers. Independent laboratory and field performance verifications have shown that the Aqua-Swirl[®] achieves over 80% suspended solids removal efficiency on a net annual basis.

The Aqua-Swirl[®] is most commonly installed in an “off-line” configuration. Or, depending on local regulations, an “in-line” (on-line) conveyance flow diversion (CFD) system can be used. The CFD model allows simple installation by connecting directly to the existing storm conveyance pipe thereby providing full treatment of the “first flush,” while the peak design storm is diverted and channeled through the main conveyance pipe.



The patented Aqua-Swirl[®] Stormwater Treatment System provides a highly effective means for the removal of sediment, floating debris, and free oil. Swirl technology, or vortex separation, is a proven form of treatment utilized in the stormwater industry to accelerate gravitational separation.



Floatable debris in the Aqua-Swirl®

Each Aqua-Swirl® is constructed of high performance, lightweight and durable materials including polymer coated steel (PCS), high density polyethylene (HDPE), or fiberglass reinforced polymer (FRP). These materials eliminate the need for heavy lifting equipment during installation.



System Operation

The treatment operation begins when stormwater enters the Aqua-Swirl® through a tangential inlet pipe that produces a circular (or vortex) flow pattern that causes contaminants to settle to the base of the unit. Since stormwater flow is intermittent by nature, the Aqua-Swirl® retains water between storm events providing both dynamic and quiescent settling of solids. The dynamic settling occurs during each storm event while the quiescent settling takes place between successive storms. A combination of gravitational and hydrodynamic drag forces encourages the solids to drop out of the flow and migrate to the center of the chamber where velocities are the lowest.

The treated flow then exits the Aqua-Swirl® behind the arched outer baffle. The top of the baffle is sealed across the treatment channel, thereby eliminating floatable pollutants from escaping the system. A vent pipe is extended up the riser to expose the backside of the baffle to atmospheric conditions, preventing a siphon from forming at the bottom of the baffle.



Custom Applications

The Aqua-Swirl® system can be modified to fit a variety of purposes in the field, and the angles for inlet and outlet lines can be modified to fit most applications. The photo below demonstrates the flexibility of Aqua-Swirl® installations using a “twin” configuration in order to double the

water quality treatment capacity. Two Aqua-Swirl[®] units were placed side by side in order to treat a high volume of water while occupying a small amount of space.



Custom designed AS-9 Twin Aqua-Swirl[®]



Retrofit Applications

The Aqua-Swirl[®] system is designed so that it can easily be used for retrofit applications. With the invert of the inlet and outlet pipe at the same elevation, the Aqua-Swirl[®] can easily be connected directly to the existing storm conveyance drainage system. Furthermore, because of the lightweight nature and small footprint of the Aqua-Swirl[®], existing infrastructure utilities (i.e., wires, poles, trees) would be unaffected by installation.



AquaShield[™] Product System Maintenance

The long term performance of any stormwater treatment structure, including manufactured or land based systems, depends on a consistent maintenance plan. Inspection and maintenance functions are simple and easy for the AquaShield[™] Stormwater Treatment Systems allowing all inspections to be performed from the surface.

It is important that a routine inspection and maintenance program be established for each unit based on: (a) the volume or load of the contaminants of concern, (b) the frequency of releases of contaminants at the facility or location, and (c) the nature of the area being drained.

In order to ensure that our systems are being maintained properly, AquaShield[™] offers a maintenance solution to all of our customers. We will arrange to have maintenance performed.



Inspection

All AquaShield™ products can be inspected from the surface, eliminating the need to enter the systems to determine when cleanout should be performed. In most cases, AquaShield™ recommends a quarterly inspection for the first year of operation to develop an appropriate schedule of maintenance. Based on experience of the system's first year in operation, we recommend that the inspection schedule be revised to reflect the site-specific conditions encountered. Typically, the inspection schedule for subsequent years is reduced to semi-annual inspection.



Aqua-Swirl® Maintenance

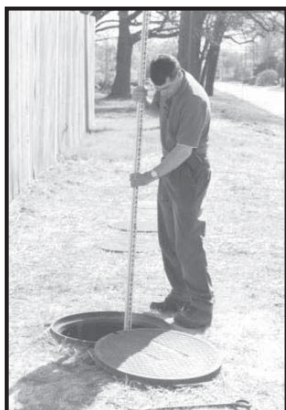
The Aqua-Swirl® has been designed to minimize and simplify the inspection and maintenance process. The single chamber system can be inspected and maintained entirely from the surface thereby eliminating the need for confined space entry. Furthermore, the entire structure (specifically, the floor) is accessible for visual inspection from the surface. There are no areas of the structure that are blocked from visual inspection or periodic cleaning. Inspection of any free-floating oil and floatable debris can be directly observed and maintained through the manhole access provided directly over the swirl chamber.

Aqua-Swirl® Inspection Procedure

To inspect the Aqua-Swirl®, a hook is needed to remove the manhole cover. AquaShield™ provides a customized manhole cover with our distinctive logo to make it easy for maintenance crews to locate the system in the field. We also provide a permanent metal information plate

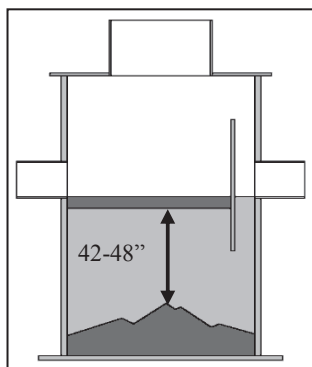
affixed inside the access riser which provides our contact information, the Aqua-Swirl[®] model size, and serial number.

The only tools needed to inspect the Aqua-Swirl[®] system are a flashlight and a measuring device such as a stadia rod or pole. Given the easy and direct accessibility provided, floating oil and debris can be observed directly from the surface. Sediment depths can easily be determined by lowering a measuring device to the top of the sediment pile and to the surface of the water.

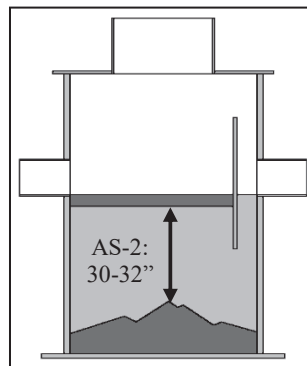


Sediment inspection using a stadia rod in a single chamber

The maintenance trigger for Aqua-Swirl[®] Models AS-3 through AS-13 occurs when the sediment pile is within 42 to 48 inches of the standing water surface. For the Aqua-Swirl[®] Model AS-2, maintenance is needed when the top of the sediment pile is measured to be 30 to 32 inches below the standing water surface.



Maintenance trigger for Aqua-Swirl[®] Models AS-3 through AS-13 occurs when sediment pile is 42-48 inches below water surface.



Maintenance trigger for Aqua-Swirl[®] Model AS-2 occurs when sediment pile is 30 to 32 inches below water surface.

It should be noted that in order to avoid underestimating the volume of sediment in the chamber, the measuring device must be carefully lowered to the *top* of the sediment pile. Keep in mind that the finer sediment at the top of the pile may offer less resistance to the measuring device than the larger particles which typically occur deeper within the sediment pile.

The Aqua-Swirl[®] design allows for the sediment to accumulate in a semi-conical fashion as illustrated above. That is, the depth to sediment as measured below the water surface may be less in the center of the swirl chamber; and likewise, may be greater at the edges of the swirl chamber.

Aqua-Swirl[®] Cleanout Procedure

Cleaning the Aqua-Swirl[®] is simple and quick. Free-floating oil and floatable debris can be observed and removed directly through the 30-inch service access riser provided. A vacuum truck is typically used to remove the accumulated sediment and debris. An advantage of the Aqua-Swirl[®] design is that the entire sediment storage area can be reached with a vacuum hose from the surface (reaching all the sides). Since there are no multiple or limited (hidden or “blind”) chambers in the Aqua-Swirl[®], there are no restrictions to impede on-site maintenance tasks.

Disposal of Recovered Materials

Disposal of recovered material is typically handled in the same fashion as catch basin cleanouts. AquaShield[™] recommends that all maintenance activities be performed in accordance with appropriate health and safety practices for the tasks and equipment being used.

AquaShield[™] also recommends that all materials removed from the Aqua-Swirl[®] and any external structures (e.g, bypass features) be handled and disposed in full accordance with any applicable local and state requirements.



**Vacuum truck quickly cleans the Aqua-Swirl[®]
from a single chamber**

***Aqua-Swirl[®] Inspection and Maintenance Work Sheets
on following pages***

Aqua-Swirl[®] Inspection and Maintenance Manual

Work Sheets

SITE and OWNER INFORMATION

Site Name: _____

Site Location: _____

Date: _____ Time: _____

Inspector Name: _____

Inspector Company: _____ Phone #: _____

Owner Name: _____

Owner Address: _____

Owner Phone #: _____ Emergency Phone #: _____

INSPECTIONS

I. Floatable Debris and Oil

1. Remove manhole lid to expose liquid surface of the Aqua-Swirl[®].
2. Remove floatable debris with basket or net if any present.
3. If oil is present, measure its depth. Clean liquids from system if one half (½) inch or more oil is present.

Note: Water in Aqua-Swirl[®] can appear black and similar to oil due to the dark body of the surrounding structure. Oil may appear darker than water in the system and is usually accompanied by oil stained debris (e.g. Styrofoam, etc.). The depth of oil can be measured with an oil/water interface probe, a stadia rod with water finding paste, a coliwasa, or collect a representative sample with a jar attached to a rod.

II. Sediment Accumulation

1. Lower measuring device (e.g. stadia rod) into swirl chamber through service access provided until top of sediment pile is reached.
2. Record distance to top of sediment pile from top of standing water: _____ inches
3. For Aqua-Swirl[®] Models AS-3 through AS-13, schedule cleaning if value in Step #2 is 48 to 42 inches or less.
4. For Aqua-Swirl[®] Model AS-2, schedule cleaning if value in Step #2 is 32 to 30 inches or less.

III. Diversion Structures (External Bypass Features)

If a diversion (external bypass) configuration is present, it should be inspected as follows:

1. Inspect weir or other bypass feature for structural decay or damage. Weirs are more susceptible to damage than off-set piping and should be checked to confirm that they are not crumbling (concrete or brick) or decaying (steel).
2. Inspect diversion structure and bypass piping for signs of structural damage or blockage from debris or sediment accumulation.
3. When feasible, measure elevations on diversion weir or piping to ensure it is consistent with site plan designs.
4. Inspect downstream (convergence) structure(s) for sign of blockage or structural failure as noted above.

CLEANING

Schedule cleaning with local vacuor company or AquaShield™ to remove sediment, oil and other floatable pollutants. The captured material generally does not require special treatment or handling for disposal. Site-specific conditions or the presence of known contaminants may necessitate that appropriate actions be taken to clean and dispose of materials captured and retained by the Aqua-Swirl®. All cleaning activities should be performed in accordance with property health and safety procedures.

AquaShield™ always recommends that all materials removed from the Aqua-Swirl® during the maintenance process be handled and disposed in accordance with local and state environmental or other regulatory requirements.

MAINTENANCE SCHEDULE

I. During Construction

Inspect the Aqua-Swirl® every three (3) months and clean the system as needed. The Aqua-Swirl® should be inspected and cleaned at the end of construction regardless of whether it has reached its maintenance trigger.

II. First Year Post-Construction

Inspect the Aqua-Swirl® every three (3) months and clean the system as needed.

Inspect and clean the system once annually regardless of whether it has reached its sediment or floatable pollutant storage capacity.

III. Second and Subsequent Years Post-Construction

If the Aqua-Swirl® did not reach full sediment or floatable pollutant capacity in the First Year Post-Construction period, the system can be inspected and cleaned once annually.

If the Aqua-Swirl® reached full sediment or floatable pollutant capacity in less than 12 months in the First Year Post-Construction period, the system should be inspected once

every six (6) months and cleaned as needed. The Aqua-Swirl[®] should be cleaned annually regardless of whether it reaches its sediment or floatable pollutant capacity.

IV. Bypass Structures

Bypass structures should be inspected whenever the Aqua-Swirl[®] is inspected. Maintenance should be performed on bypass structures as needed.

MAINTENANCE COMPANY INFORMATION

Company Name: _____

Street Address: _____

City: _____ State/Prov.: _____ Zip/Postal Code: _____

Contact: _____ Title: _____

Office Phone: _____ Cell Phone: _____

ACTIVITY LOG

Date of Cleaning: _____ (Next inspection should be 3 months from this data for first year).

Time of Cleaning: Start: _____ End: _____

Date of Next Inspection: _____

Floatable debris present: Yes No

Notes: _____

Oil present: Yes No Oil depth (inches): _____

Measurement method and notes: _____

STRUCTURAL CONDITIONS and OBSERVATIONS

Structural damage: Yes No Where: _____

Structural wear: Yes No Where: _____

Odors present: Yes No Describe: _____

Clogging: Yes No Describe: _____

Other Observations: _____

NOTES

Additional Comments and/or Actions To Be Taken	Time Frame

ATTACHMENTS

- Attach site plan showing Aqua-Swirl[®] location.
- Attach detail drawing showing Aqua-Swirl[®] dimensions and model number.
- If a diversion configuration is used, attach details showing basic design and elevations (where feasible).

Aqua-Swirl®

TABULAR MAINTENANCE SCHEDULE

Date Construction Started: _____

Date Construction Ended: _____

During Construction

Activity	Month											
	1	2	3	4	5	6	7	8	9	10	11	12
Inspect and Clean as needed			X			X			X			X
Inspect Bypass and maintain as needed			X			X			X			X
Clean System*												X*

* The Aqua-Swirl® should be cleaned **once a year** regardless of whether it has reached full pollutant storage capacity. In addition, the system should be cleaned at the **end of construction** regardless of whether it has reach full pollutant storage capacity.

First Year Post-Construction

Activity	Month											
	1	2	3	4	5	6	7	8	9	10	11	12
Inspect and Clean as needed			X			X			X			X
Inspect Bypass and maintain as needed			X			X			X			X
Clean System*												X*

* The Aqua-Swirl® should be cleaned **once a year** regardless of whether it has reached full pollutant storage capacity.

Second and Subsequent Years Post-Construction

Activity	Month											
	1	2	3	4	5	6	7	8	9	10	11	12
Inspect and Clean as needed												X*
Inspect Bypass, maintain as needed												X*
Clean System*												X*

* If the Aqua-Swirl® did **not** reach full sediment or floatable pollutant capacity in the First Year Post-Construction period, the system can be inspected and cleaned once annually.

If the Aqua-Swirl® **reached** full sediment or floatable pollutant capacity in less than 12 months in the First Year Post-Construction period, the system should be inspected once every six (6) months or more frequently if past history warrants, and cleaned as needed. The Aqua-Swirl® should be cleaned annually regardless of whether it reaches its full sediment or floatable pollutant capacity.



Aqua-Swirl™ Sizing Chart *(English)*

Aqua-Swirl™ Model	Swirl Chamber Diameter (ft.)	Maximum Stub-Out Pipe Outer Diameter (in.)		Water Quality Treatment Flow ² (cfs)	Oil/Debris Storage Capacity (gal)	Sediment Storage Capacity (ft ³)
		On/Offline	CFD ¹			
AS-2	2.50	8	12	1.1	37	10
AS-3	3.25	10	16	1.8	110	20
AS-4	4.25	12	18	3.2	190	32
AS-5	5.00	12	24	4.4	270	45
AS-6	6.00	14	30	6.3	390	65
AS-7	7.00	16	36	8.6	540	90
AS-8	8.00	18	42	11.2	710	115
AS-9	9.00	20	48	14.2	910	145
AS-10	10.0	22	54	17.5	1130	180
AS-12	12.0	24	48	25.2	1698	270
AS-XX	Custom	--	--	>26	--	--

*Higher water quality treatment flow rates can be designed with multiple swirls.

- 1) The **Aqua-Swirl™ Conveyance Flow Diversion (CFD)** provides full treatment of the "first flush," while the peak design storm is diverted and channeled through the main conveyance pipe. Please refer to your local representative for more information.
- 2) Many regulatory agencies are establishing "water quality treatment flow rates" for their areas based on the initial movement of pollutants into the storm drainage system. The treatment flow rate of the Aqua-Swirl™ system is engineered to meet or exceed the local water quality treatment criteria. This "**water quality treatment flow rate**" typically represents approximately 90% to 95% of the total annual runoff volume.

The design and orientation of the Aqua-Filter™ generally entails some degree of customization. For assistance in design and specific sizing using historical rainfall data, please refer to an AquaShield™ representative or visit our website at www.AquaShieldInc.com. CAD details and specifications are available upon request.

10.) FocalPoint Biofilter System

Designing with FocalPoint in New York

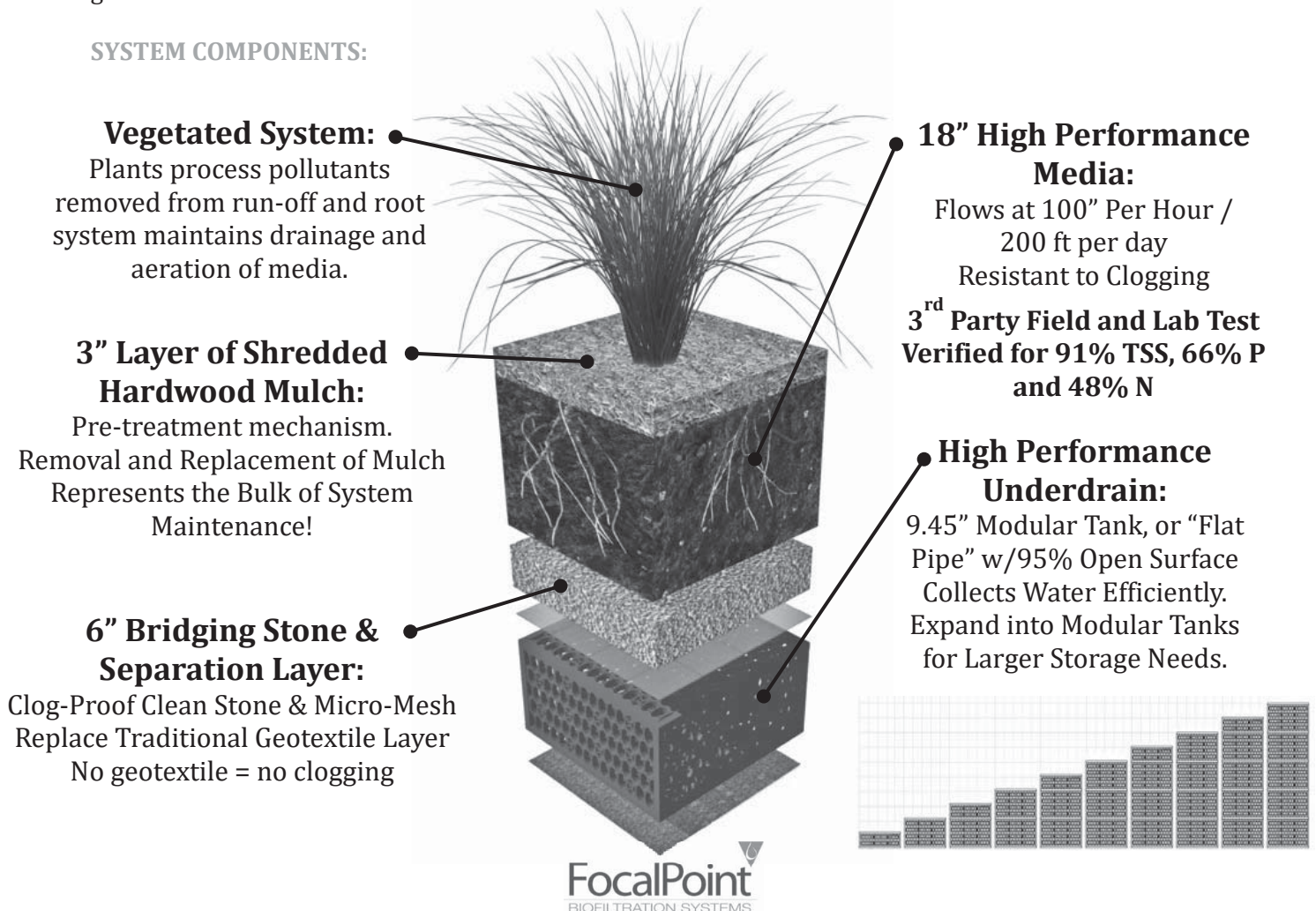
Utilizing a High Performance Modular Biofiltration System for New Development, Redevelopment and Retrofit Projects

The New York State Department of Environmental Conservation (NYS DEC) has approved the FocalPoint (High Performance Modular Biofiltration System) as a proprietary stormwater management practice for use on New Development, Redevelopment and Retrofit Projects.

SYSTEM OVERVIEW:

The FocalPoint is an ultra-efficient, modular biofiltration system that treats and drains large volumes of stormwater runoff in a small footprint to meet post construction stormwater treatment requirements. The system can be installed along the edge of a roadway behind curb line, in landscaped stormwater basins and be incorporated into an urban green infrastructure streetscape. As an innovative micro-scale practice, the FocalPoint overcomes many of the inherent challenges with traditional micro-bioretenention and other similar BMPs – improving media quality control, reduction in space needed and reduced maintenance footprint, and elimination of clog-prone geotextiles.

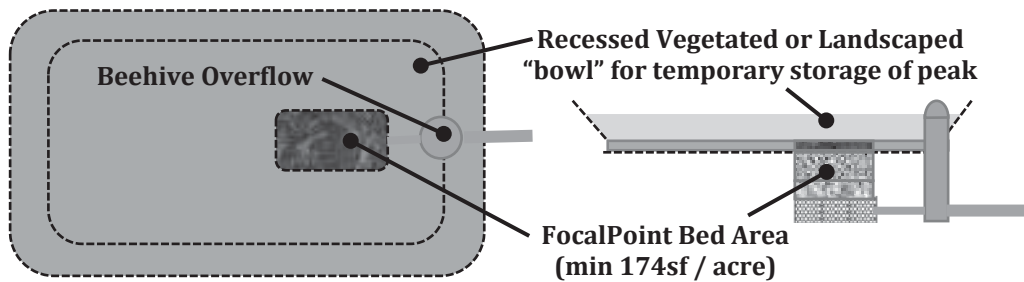
SYSTEM COMPONENTS:



SIZING SUMMARY:

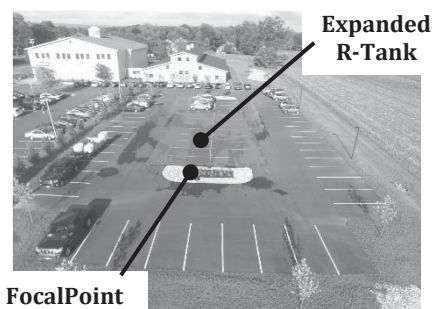
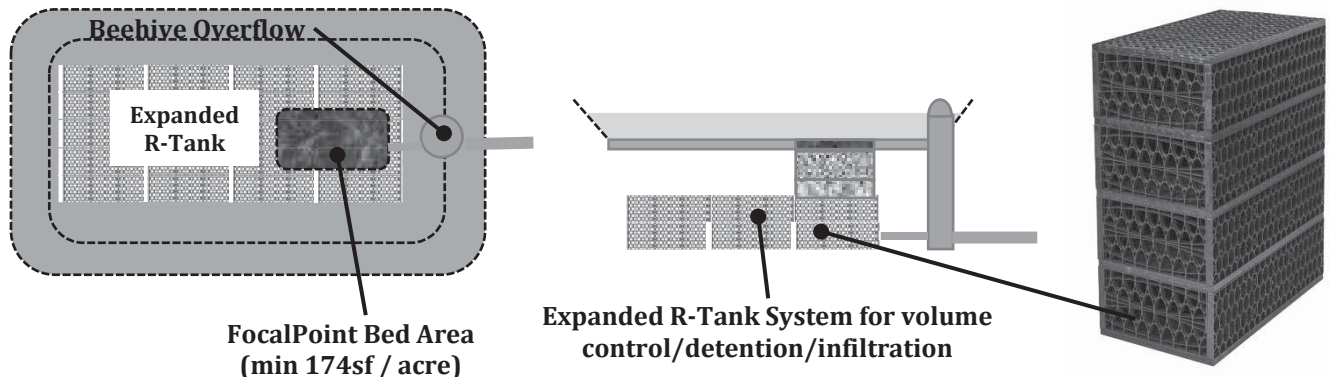
Water Quality (WQ) Treatment Only projects:

- The surface area of the FocalPoint media bed must be a minimum of **174 square feet per 1 acre of impervious area**
- The system must also be modelled in HydroCAD (or similar TR-55 modelling software) to demonstrate that the entire volume of a Type II or Type III (depending on region) 24 hr storm is treated prior to activation of the bypass/overflow (typically set at 6-12" above the mulch surface). Note: a 1.20 to 1.50 inch rainfall event typically generates 1.0 inches of runoff depending on watershed characteristics



Managing Larger Storms (with expanded infiltration or detention):

The R-Tank modular underdrain at the bottom of the FocalPoint gives the designer the opportunity to satisfy both WQv, Channel Protection, Recharge and Detention for controlled release of major storm events all within one system. The R-Tank can be expanded both vertically and horizontally to meet the volume/storage goals to ensure runoff is not only treated by the FocalPoint but also achieves post development peak flowrate control. The benefit to designers is that the R-Tank portion of the system can be built under parking areas (H-20, HS-25 load rated) to improve site surface utilization.



Site Development Project Examples:



**Housing Development – FocalPoint with Expanded R-Tank system
(Portland, ME)**



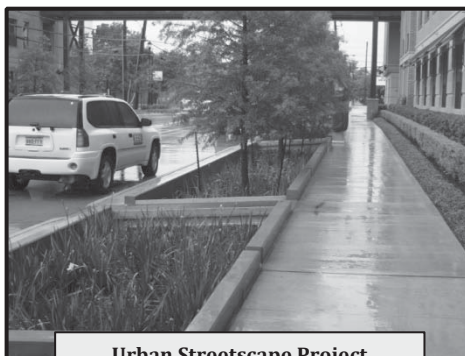
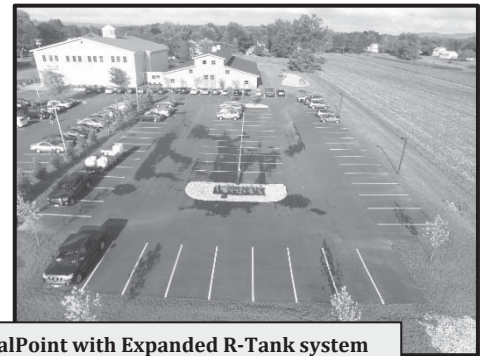
Grant Funded WQ Project – FocalPoint (Ogunquit, ME)



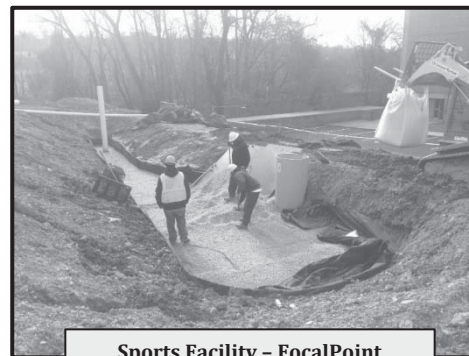
Site Development Project – FocalPoint (Portland, ME)



**Commercial Development – FocalPoint with Expanded R-Tank system
(Hadley, MA)**



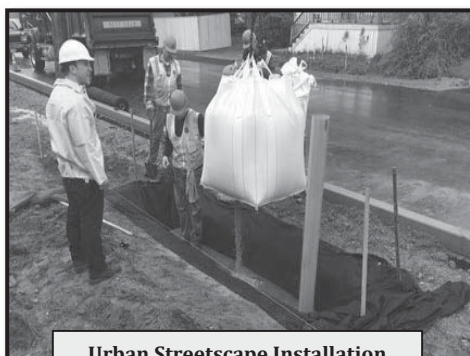
**Urban Streetscape Project
FocalPoint**



**Sports Facility – FocalPoint
(Washington D.C.)**



Grant Funded WQ Project – FocalPoint (Kittery, ME)



**Urban Streetscape Installation
FocalPoint**



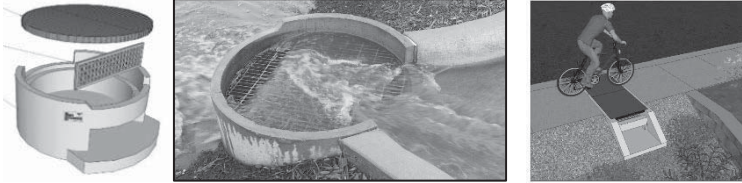
**Premixed, certified FocalPoint
Materials/Components**



**Site Development Project – FocalPoint
with Expanded R-Tank – Newington NH**

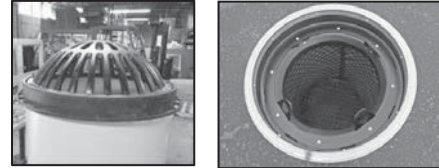
ACCESSORY ITEMS TO CONSIDER:

Rain Guardian Turret/Foxhole Curblin precast pretreatment unit for collection of sediment and energy dissipation.



ACF Beehive Overflow Filter

Domed riser with geotextile insert for collection of gross solids during major storm events.



DESIGN SUPPORT:

ACF and Fabco's in house engineering support team provide site specific technical support to engineers, designers, landscape architects and contractors. ACF realizes that engineers today are working on several projects at one time and are always working against low engineering design budgets. The intent of our technical support is to not only provide you with product information but to work alongside you and develop solutions to your site development design challenges.

We offer site specific design computations and conceptual layout support at no charge which we typically bind up with all relevant attachments in a design "Sketchbook" - a helpful tool that ultimately brings value and saves you time and associated cost as you work through incorporating this innovative solution into your design plans.



CONTACT ACF ENVIRONMENTAL:

Bill Stoecker

BMP Specialist - Fabco Industries

bill@energysmartsolutionsinc.com

(800) 559 2450

Robert J Woodman - P.E., C.P.E.S.C

rwoodman@acfenv.com

Senior Stormwater Engineer - ACF Environmental





FocalPoint

BIOFILTRATION SYSTEMS

HIGH PERFORMANCE MODULAR BIOFILTRATION SYSTEM (HPMBS)

Operations & Maintenance



GENERAL DESCRIPTION

The following general specifications describe the general operations and maintenance requirements for the FocalPoint® High Performance Modular Biofiltration System (HPMBS). The system utilizes physical, chemical and biological mechanisms of a soil, plant and microbe complex to remove pollutants typically found in urban stormwater runoff. The treatment system is a fully equipped, modular, constructed in place system designed to treat contaminated runoff.

Stormwater enters the FocalPoint® HPMBS, is filtered by the High Flow Biofiltration Media and passes through to the underdrain/storage system where the treated water is detained, retained or infiltrated to sub-soils, prior to discharge to the storm sewer system of any remaining flow.

Higher flows bypass the FocalPoint® HPMBS via a downstream inlet or other overflow conveyance. Maintenance is a simple, inexpensive and safe operation that does not require confined space entry, pumping or vacuum equipment, or specialized tools. Properly trained landscape personnel can effectively maintain FocalPoint® HPMBS by following instructions in this manual.



BASIC OPERATIONS

FocalPoint® is a modular, high performance biofiltration system that often works in tandem with other integrated management practices (IMP). Contaminated stormwater runoff enters the biofiltration bed through a conveyance swale, planter box, or directly through a curb cut or false inlet. Energy is dissipated by a rock or vegetative dissipation device and is absorbed by a 3-inch layer of aged, double shredded hardwood mulch, with fines removed, (when specified) on the surface of the biofiltration media.

As the water passes through the mulch layer, most of the larger sediment particles and heavy metals are removed through sedimentation and chemical reactions with the organic material in the mulch. Water passes through the biofiltration media where the finer particles are removed and numerous chemical reactions take place to immobilize and capture pollutants in the soil media.

The cleansed water passes into the underdrain/storage system and remaining flows are directed to a storm sewer system or other appropriate discharge point. Once the pollutants are in the soil, bacteria begin to break down and metabolize the materials and the plants begin to uptake and metabolize the pollutants. Some pollutants such as heavy metals, which are chemically bound to organic particles in the mulch, are released over time as the organic matter decomposes to release the metals to the feeder roots of the plants and the cells of the bacteria in the soil where they remain and are recycled. Other pollutants such as phosphorus are chemically bound to the soil particles and released slowly back to the plants and bacteria and used in their metabolic processes. Nitrogen goes through a variety of very complex biochemical processes where it can ultimately end up in the plant/bacteria biomass, turned to nitrogen gas or dissolves back into the water column as nitrates depending on soil temperature, pH and the availability of oxygen. The pollutants ultimately are retained in the mulch, soil and biomass with some passing out of the system into the air or back into the water.

DESIGN AND INSTALLATION

Each project presents different scopes for the use of FocalPoint® HPMBs. To ensure the safe and specified function of this stormwater BMP, Convergent Water Technologies and/or its Value Added Resellers (VAR) review each application before supply. Information and design assistance is available to the design engineer during the planning process. Correct FocalPoint® sizing is essential to optimum performance. The engineer shall submit calculations for approval by the local jurisdiction when required. The contractor and/or VAR is responsible for the correct installation of FocalPoint® HPMBs units as described in approved plans. A comprehensive installation manual is available at www.convergentwater.com.





MAINTENANCE

Why Maintain?

All stormwater treatment systems require maintenance for effective operation. This necessity is often incorporated in your property's permitting process as a legally binding BMP maintenance agreement. Other reasons for maintenance include:

- Avoid legal challenges from your jurisdiction's maintenance enforcement program.
- Prolong the lifespan of your FocalPoint® HPMBS.
- Avoid costly repairs.
- Help reduce pollutant loads leaving your property.

Simple maintenance of the FocalPoint® HPMBS is required to continue effective pollutant removal from stormwater runoff before any discharge into downstream waters. This procedure will also extend the longevity of the living biofiltration system. The unit will recycle and accumulate pollutants within the biomass, but may also be subjected to other materials entering the surface of the system. This may include trash, silt and leaves etc. which will be contained above the mulch and/or biofiltration media layer. Too much silt may inhibit the FocalPoint's® HPMBS flow rate, which is a primary reason for system maintenance. Removal of accumulated silt/sediment and/or replacement of the mulch layer (when specified), is an important activity that prevents over accumulation of such silt/sediment.

When to Maintain?

Convergent Water Technologies and/or its VAR includes a 1-year maintenance plan with each system purchased. Annual included maintenance consists of two (2) scheduled maintenance visits. Additional maintenance may be necessary depending on sediment and trash loading (by Owner or at additional cost). The start of the maintenance plan begins when the system is activated for full operation. Full operation is defined as when the site is appropriately stabilized, the unit is installed and activated (by VAR), i.e., when mulch (if specified) and plantings are added.

Activation should be avoided until the site is fully stabilized (full landscaping, grass cover, final paving and street sweeping completed). Maintenance visits are scheduled seasonally; the spring visit aims to clean up after winter loads including salts and sands. The fall visit helps the system by removing excessive leaf litter.

A first inspection to determine if maintenance is necessary should be performed at least twice annually after storm events of greater than (1) one inch total depth (subject to regional climate). Please refer to the maintenance checklist for specific conditions that indicate if maintenance is necessary.

It has been found that in regions which receive between 30-50 inches of annual rainfall, (2) two visits are generally required. Regions with less rainfall often only require (1) one visit per annum. Varying land uses can affect maintenance frequency.



Some sites may be subjected to extreme sediment or trash loads, requiring more frequent maintenance visits. This is the reason for detailed notes of maintenance actions per unit, helping the VAR/Maintenance contractor and Owner predict future maintenance frequencies, reflecting individual site conditions.

Owners must promptly notify the VAR/Maintenance contractor of any damage to the plant(s), which constitute(s) an integral part of the biofiltration technology. Owners should also advise other landscape or maintenance contractors to leave all maintenance of the FocalPoint® HPMBS to the VAR/Maintenance contractor (i.e. no pruning or fertilizing).

EXCLUSION OF SERVICES

It is the responsibility of the owner to provide adequate irrigation when necessary to the plant(s) in the FocalPoint® HPMBS.

Clean up due to major contamination such as oils, chemicals, toxic spills, etc. will result in additional costs and are not covered under the VAR/Maintenance contractor maintenance contract. Should a major contamination event occur, the Owner must block off the outlet pipe of the FocalPoint® (where the cleaned runoff drains to, such as drop-inlet) and block off the point where water enters of the FocalPoint® HPMBS. The VAR/Maintenance contractor should be informed immediately.

MAINTENANCE VISIT SUMMARY

Each maintenance visit consists of the following simple tasks (detailed instructions below).

1. Inspection of FocalPoint® HPMBS and surrounding area
2. Removal of debris, trash and mulch
3. Mulch replacement
4. Plant health evaluation (including measurements) and pruning or replacement as necessary
5. Clean area around FocalPoint® HPMBS
6. Complete paperwork, including date stamped photos of the tasks listed above.

MAINTENANCE TOOLS, SAFETY EQUIPMENT AND SUPPLIES

Ideal tools include: camera, bucket, shovel, broom, pruners, hoe/rake, and tape measure. Appropriate Personal Protective Equipment (PPE) should be used in accordance with local or company procedures. This may include impervious gloves where the type of trash is unknown, high visibility clothing and barricades when working in close proximity to traffic and also safety hats and shoes.



Inspection of FocalPoint® HPMBS and surrounding area

Record individual unit before maintenance with photograph (numbered). Record on Maintenance Report (see example in this document) the following:

<input type="checkbox"/> Standing Water	yes no	<input type="checkbox"/> Damage to HPMBS System to Overflow conveyance	yes no
<input type="checkbox"/> Is Bypass Inlet Clear?	yes no		yes no

Removal of Silt / Sediment / Clay

Dig out silt (if any) and mulch and remove trash & foreign items.

<input type="checkbox"/> Silt / Clay Found?	yes no	<input type="checkbox"/> Leaves?	yes no
<input type="checkbox"/> Cups / Bags Found?	yes no	<input type="checkbox"/> Volume of material removed _____	(volume or weight)

Removal of debris, trash and mulch

After removal of mulch and debris, measure distance from the top of the FocalPoint® HPMBS engineered media soil to the flow line elevation of the adjacent overflow conveyance. If this distance is greater than that specified on the plans (typ. 6" - 12"), add media (not top soil or other) to recharge to the distance specified.

- ☐ Distance to media surface to flow line of overflow conveyance (inches) _____
- ☐ # of Buckets of Media Added _____

Mulch Replacement

Most maintenance visits require only replacement mulch (if utilized) which must be, aged, double shredded hardwood mulch with fines removed. For smaller projects, one cubic foot of mulch will cover four square feet of biofiltration bed, and for larger projects, one cubic yard of mulch will cover 108 square feet of biofiltration bed. Some visits may require additional FocalPoint® HPMBS engineered soil media available from the VAR/Contractor.

- ☐ Add double shredded, aged hardwood mulch which has been screened to remove fines, evenly across the entire biofiltration media bed to a depth of 3".
- ☐ Clean accumulated sediment from energy dissipation system at the inlet to the FocalPoint® HPMBS to allow for entry of trash during a storm event.

Plant health evaluation and pruning or replacement as necessary

Examine the plant's health and replace if dead or dying.
Prune as necessary to encourage growth in the correct directions

<input type="checkbox"/> Height above Grate (feet) _____	<input type="checkbox"/> Health	alive dead
<input type="checkbox"/> Width at Widest point (feet) _____	<input type="checkbox"/> Damage to Plant	yes no

Clean area around FocalPoint® HPMBS

- ☐ Clean area around unit and remove all refuse to be disposed of appropriately.

Complete paperwork

- ☐ Deliver Maintenance Report and photographs as appropriate.
- ☐ Some jurisdictions may require submission of maintenance reports in accordance with approvals.
- ☐ It is the responsibility of the Owner to comply with local regulations.



FocalPoint Warranty

Seller warrants goods sold hereunder against defects in materials and workmanship only, for a period of (1) year from date the Seller activates the system into service. Seller makes no other warranties, express or implied.

Seller's liability hereunder shall be conditioned upon the Buyer's installation, maintenance, and service of the goods in strict compliance with the written instructions and specifications provided by the Seller. Any deviation from Seller's instructions and specifications or any abuse or neglect shall void warranties.

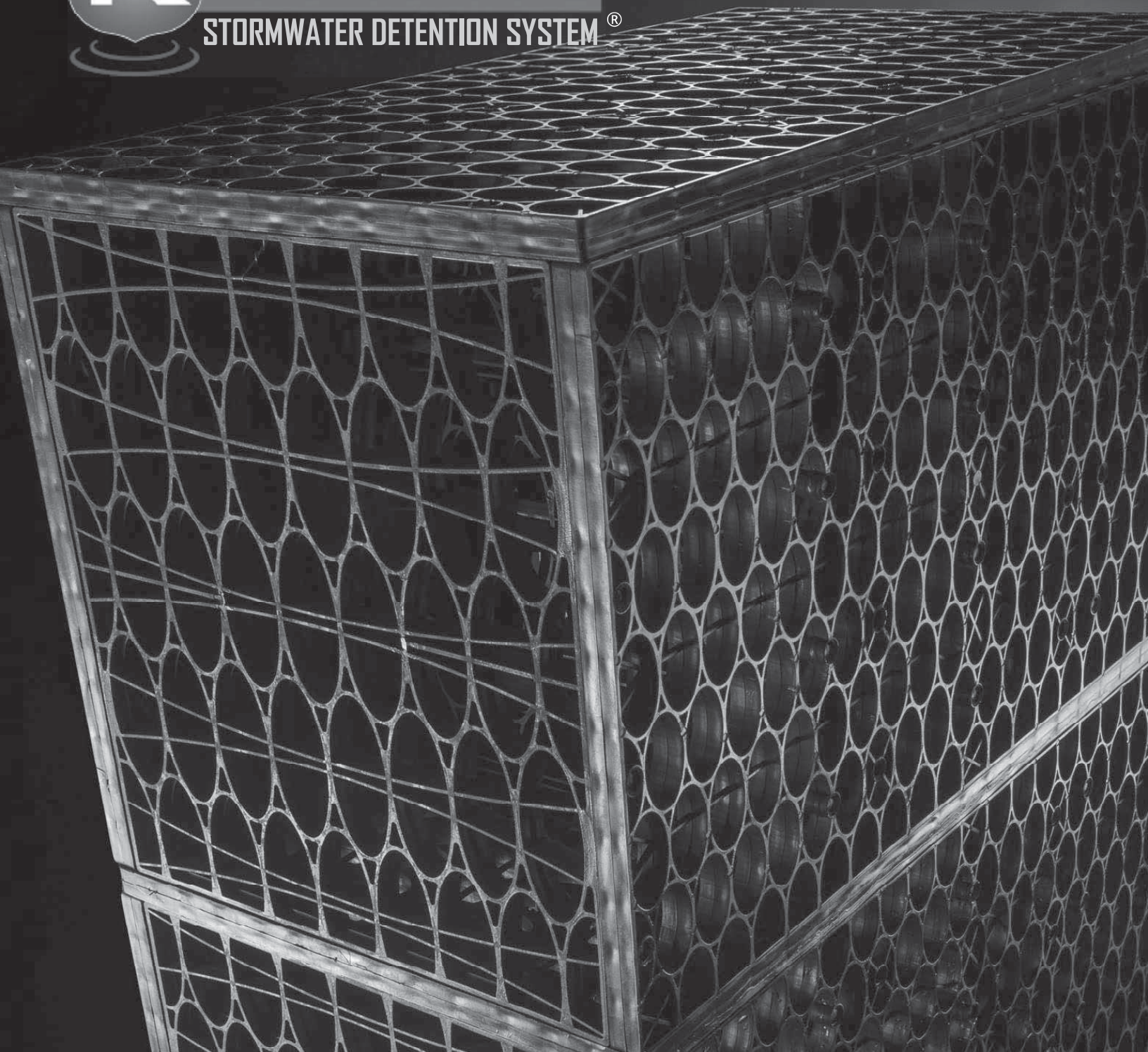
In the event of any claim upon Seller's warranty, the burden shall be upon the Buyer to prove strict compliance with all instructions and specifications provided by the Seller.

Seller's liability hereunder shall be limited only to the cost or replacement of the goods. Buyer agrees that Seller shall not be liable for any consequential losses arising from the purchase, installation, and/or use of the goods.



Maintenance Checklist

<i>Element</i>	<i>Problem</i>	<i>What To Check</i>	<i>Should Exist</i>	<i>Action</i>
<i>Inlet</i>	Excessive sediment or trash accumulation	Accumulation of sediment or trash impair free flow of water into FocalPoint	Inlet free of obstructions allowing free flow into FocalPoint System	Sediments or trash should be removed
<i>Mulch Cover</i>	Trash and floatable debris accumulation	Excessive trash or debris accumulation.	Minimal trash or other debris on mulch cover	Trash and debris should be removed and mulch cover raked level. Ensure that bark nugget
<i>Mulch Cover</i>	Ponding of water on mulch cover	Ponding in unit could be indicative of clogging due to excessive fine sediment accumulation or spill of petroleum oils	Stormwater should drain freely and evenly over mulch cover.	Contact VAR for advice.
<i>Plants</i>	Plants not growing, or in poor condition	Soil/mulch too wet, evidence of spill. Pest infestation. Vandalism to plants.	Plants should be healthy and pest free.	Contact VAR for advice.
<i>Plants</i>	Plant growth excessive	Plants should be appropriate to the species and location of FocalPoint		Trim/prune plants in accordance with typical landscaping and



LD HD SD UD XD

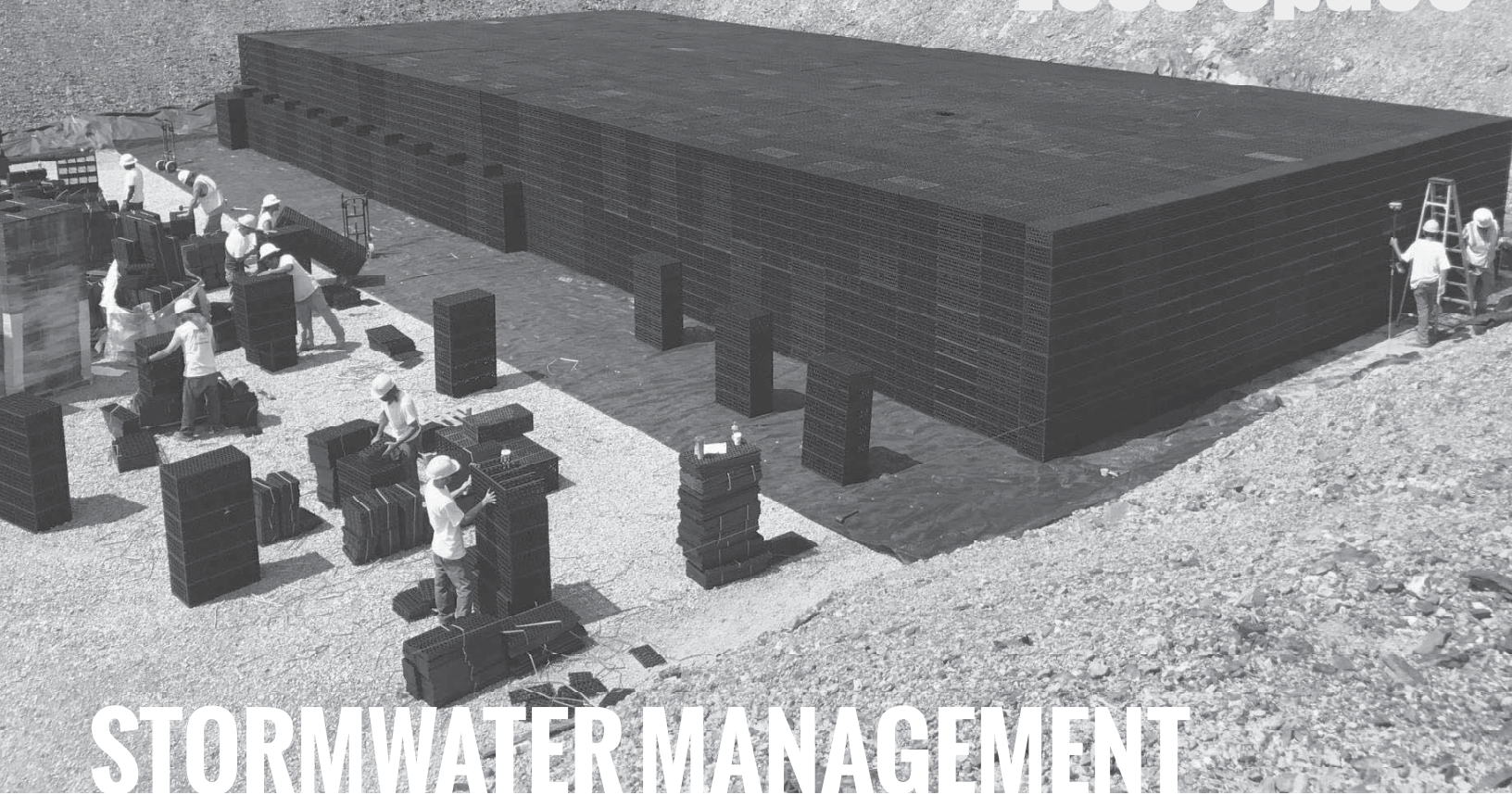
LET'S GET IT DONE®





TANK

More Stormwater Less Space



STORMWATER MANAGEMENT

Is your stormwater detention system taking up too much space? Bring it down to size with the R-Tank System, the most efficient and versatile underground stormwater storage system available today. Whether you need to reduce your system footprint to resolve a utility conflict or free up space for a future expansion, R-Tank will give you the smallest footprint, provide more options for vehicular loading and cover depths, and deliver more installation versatility than any other system around.



The R-Tank System includes five different module configurations, providing system height options from 2" to over 7' tall. And it delivers support for HS-20 and HS-25 traffic with cover depths from 6" all the way up to over 16'. Whether you're designing a project at the beach with minimal depth over the water table, or a deep system in the hills, R-Tank has you covered.

With an unlimited array of system footprints and configurations, R-Tank solves tough stormwater problems by perfectly adapting to the needs of your site. Give R-Tank a shot on your next project, and prepare to be impressed.

BENEFITS

High Capacity

- 95% void internal area

Strength

- Easily supports traffic loading from parking lots and roads
- Module options for HS-20 and HS-25 rating with cover depths from 6 inches to 16 feet

Design & Construction Versatility

- Combine modules into any shape to efficiently use space
- Vary height from 2 inches to 7 feet

Increased Infiltration and Exfiltration

- Outer shell is 90% open
- Increases groundwater recharge, reducing post-construction discharge volumes

Easy to Transport

- Can be supplied unassembled for reduced delivery costs

Lightweight and Quick to Install

- Installed by hand; no cranes required
- Reduces site access delays

Recycled Content

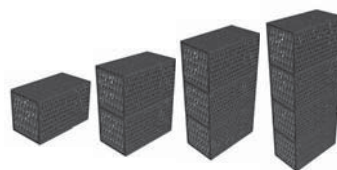
- Manufactured with recycled polypropylene



- Light Duty module (30 psi)
- Ideal for applications in green space
- Not rated for vehicular traffic
- 12" Minimum cover, 36" maximum cover
- Four internal plates



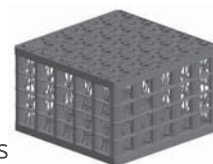
- Heavy Duty module (33.4 psi)
- Standard module for HS-20 traffic applications
- 20" Minimum cover, 84" Maximum cover
- Five internal plates



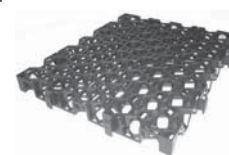
- Super Duty module (42.9 psi)
- Higher safety factors for shallow traffic applications and deeper cover
- 18" Minimum cover, 120" Maximum cover
- Five internal plates



- Ultra Duty module (134.2 psi)
- Traffic loads with 12" of cover
- Available from 14" – 66" tall
- Ideal for high water table sites



- Extreme Duty module (320 psi)
- Traffic loads with 6" cover
- 16.5' maximum cover
- Available from 2" - 10' tall
- 90% void



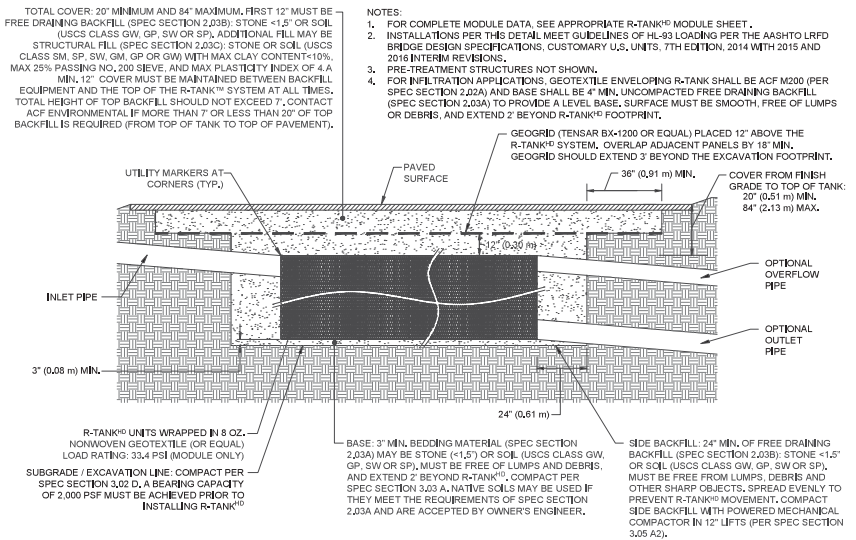
DESIGN CONSIDERATIONS

800.448.3636

acfenvironmental.com

Many factors will influence the design of the R-Tank® system. While this list is not intended to be all-inclusive, several design considerations are worth highlighting:

1. PRE-TREATMENT
2. BACKFILL MATERIALS
3. RUNOFF REDUCTION
4. WATER TABLE
5. CONSTRUCTION LOADS
6. LATERAL LOADS
7. R-TANK® MODULES
8. LOAD MODELING



1. PRE-TREATMENT

Removing pollutants from runoff before they enter an underground detention system is the only smart way to design & build a system. The best way to do that is with the Trash Guard Plus® (see page 6), but many other ways exist. Be sure the system you select will remove:

- Heavy Sediments
- Gross Pollutants (trash)
- Biodegradable Debris

2. BACKFILL MATERIALS

Backfill materials should be stone (smaller than 1.5" in diameter) or soil (GW, GP SW or SP as classified by the Unified Soil Classification System). Material must be free from lumps, debris and any sharp objects that could cut the geotextile. See the R-Tank® narrative specification section 2.03 for additional information.

3. RUNOFF REDUCTION

Most designs incorporate an outlet to drain the system at a controlled rate and/or an overflow to prevent flooding in extreme events. But be sure to take advantage of any infiltration you can achieve on the site. Consider raising the invert of your outlet or creating a sump to capture and infiltrate the water quality volume whenever possible.

4. WATER TABLE

While installing the R-Tank® below the water table is manageable, designers must be able to create a stable base and account for the system's ability to drain this water out or limit its ability to enter the system. If a liner is used to prevent ground water from entering the system, measures must be taken to prevent the system from floating.

5. CONSTRUCTION LOADS

Construction loads are often the heaviest loads the system will see throughout its life. Care must be taken during backfilling and compaction using the proper equipment (see specification section 3.05), and post-installation construction traffic should be routed around the system (Installation Guide step 12).

6. LATERAL LOADS

As systems get deeper, the loads acting on the sides of the tank increase. While vertical loads often control the design, be sure to consider lateral loading, as well.

7. R-TANK MODULES

Be sure to select the right module for your application. See the information on page 3 for more details on which module is the best fit. Also refer to the specifications for each module on the back of this brochure, or call us for assistance.

8. LOAD MODELING

A safety factor of 1.75 or higher is required when designing an R-Tank System using the AASHTO LRFD Bridge Design Specifications. Be sure to run your own loading model with all requirements specific to your site. Several example models can be found in our Tech Note on loading capabilities, and minimum cover requirements for various loads can be found in the spec on the back of this brochure.

LOW IMPACT DESIGN AND GREEN INFRASTRUCTURE

As much of the nation's Gray Infrastructure continues to decay, new concepts for a better way to rebuild it are emerging through Green Infrastructure (GI) and Low Impact Development (LID). This type of reconstruction moves beyond traditional systems that do ONE THING very well to systems that accomplish MULTIPLE objectives simultaneously. ACF has several technologies that dovetail with the goals of LID and GI that can play a significant role in the redevelopment process.



R-TANK®

Pipe and stone are used in traditional systems to move and store runoff. R-Tank does the same job, but with several additional benefits.

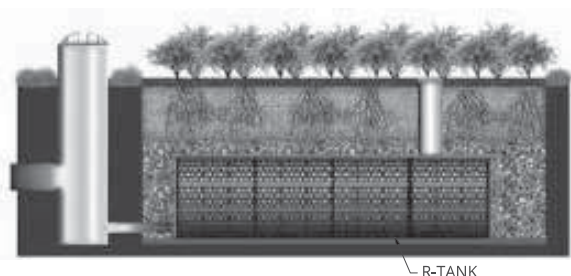
- Stores and moves runoff
- Open system encourages infiltration
- Stores 138% more water than stone
- Easily handles traffic loads beneath sidewalks and streets
- Ships flat to reduce site disturbance
- Moves water slowly, increasing time of concentration
- Fully accessible for maintenance
- Maximizes storage potential of GI practices like bioretention, street tree pits, etc.



FOCALPOINT

Traditional landscaping adds aesthetic value to projects, but has more potential. Many developers turn to bioretention, but are forced to surrender massive land areas and dedicate significant future funds to maintenance. FocalPoint reduces the space requirements and maintenance costs of bioretention by up to 90% while providing all the water purification benefits.

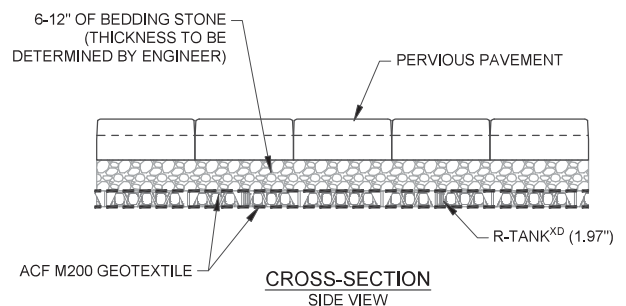
- Adds aesthetic value to properties
- Cleans runoff to improve water quality
- Reduces space requirements and maintenance costs of traditional bioretention systems
- Encourages infiltration to reduce volume of water discharged
- Pair with R-Tank® to maximize water storage and transport



PERMEABLE PAVEMENTS

Traditional pavements move vehicles efficiently, but are easily damaged by stormwater. ACF specializes in pervious pavements that handle traffic easily while providing surface infiltration rates 10 times higher than traditional pervious pavements. High surface infiltration rates reduce the expense of long-term maintenance and the headaches that go with it.

- Handles all vehicular loads
- Drains ten times faster than competing pervious pavements
- Reduces long-term maintenance costs
- Encourages infiltration
- Pair with R-Tank® to maximize water storage and transport



MAINTENANCE

Designing an R-Tank System with longevity and maintenance in mind is a simple three-step process:

1. PREVENT

Keep debris and sediment out of the system by pre-treating runoff with the Trash Guard Plus® unit (see below). For a more centralized approach, you could consider having the R-Tank units penetrate the connecting structure, which allows the use of the R-Tank® as its own trash screen. This works best with a structure that includes a sump (see drawing to right).

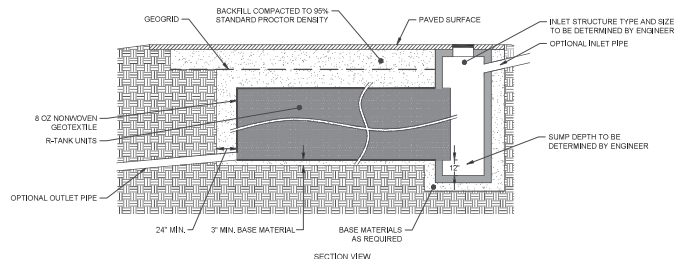
2. ISOLATE

Trap solid pollutants inside the maintenance row (see drawing to right) where they can be easily removed, using the Maintenance Modules (available in LD, HD, and UD only). These modules are wrapped in geotextile to retain solids and are fully accessible by conventional jet-vac systems to remove captured pollutants.

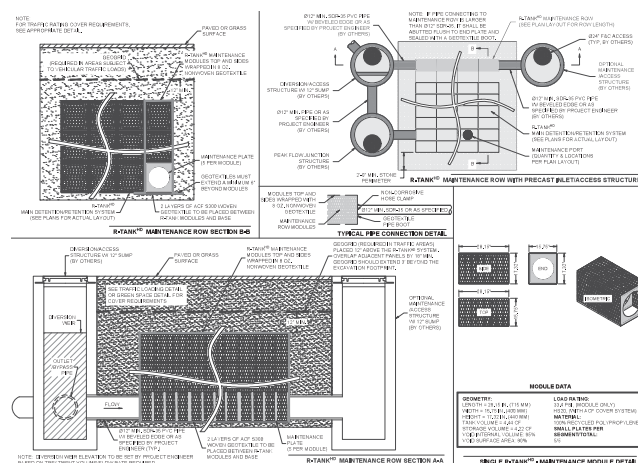
3. PROTECT

Ensure a long system life by including maintenance ports to remove any pollutants that evade the pre-treatment system and maintenance row. Maintenance ports should be specified within 10' of inlet and outlet connections, and roughly 50' on center (see detail on page 7).

INLET CONNECTION



MAINTENANCE ROW



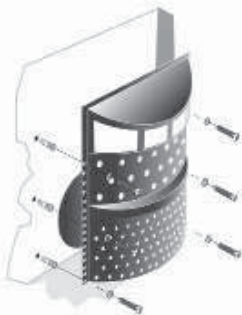
MAINTENANCE PREVENTION

TRASH GUARD PLUS®

Trash Guard Plus® is a patented stormwater pretreatment device that captures debris, sediment and floatables. Easy to install and maintain, it is a fraction of the cost of other pretreatment devices.

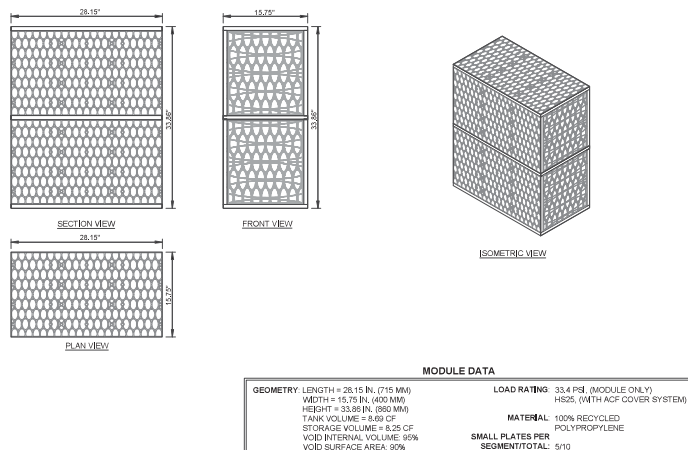
Benefits of Trash Guard Plus®

- Simple retrofit to existing catch basins
- Installs without heavy equipment
- Quick and easy assembly
- Adjusts to irregular catch basin bottoms and/or walls
- Eliminates eyesore stormwater trash at public parks, beaches, and waterways
- Removes harmful nutrients and regulated metals

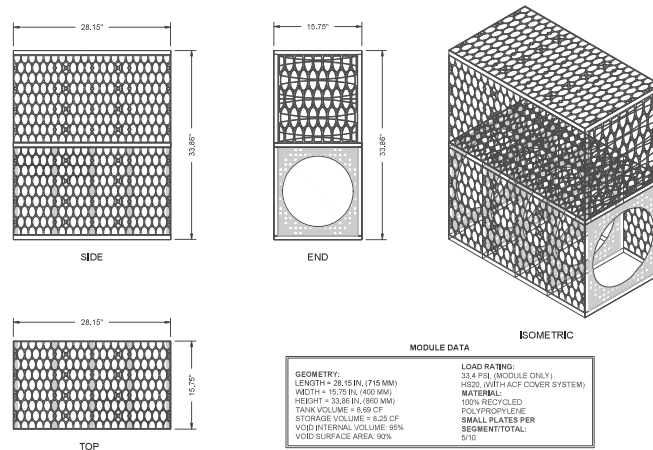


CAD DRAWINGS

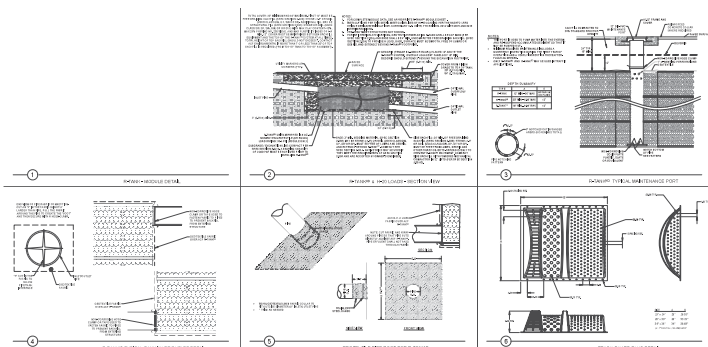
Module Drawing - Double



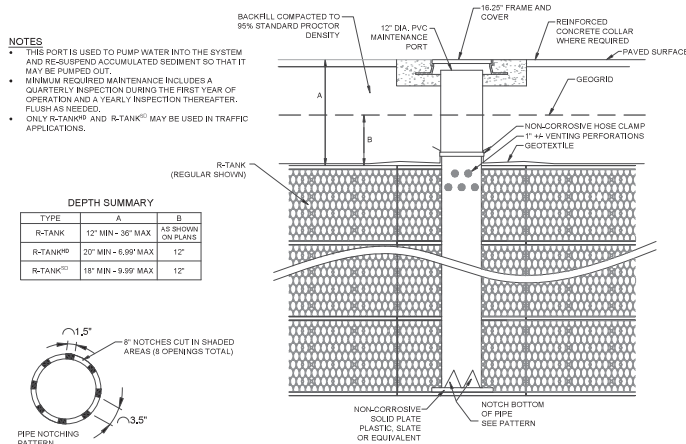
Maintenance Module - Double



Composite Details



Maintenance Port



Selecting the Right R-Tank Module

Module

Cover Depth* (Inches)	LD	HD	SD	UD	XD
Minimum 6"	Green Space - No Traffic	Green Space - No Traffic	Green Space - No Traffic	Green Space - No Traffic	HS-20
12"	Green Space - No Traffic	Green Space - No Traffic	Green Space - No Traffic	HS-20**	HS-20
14"	Green Space - No Traffic	Green Space - No Traffic	Green Space - No Traffic	HS-20	HS-20
18"	Green Space - No Traffic	Green Space - No Traffic	HS-20	HS-20	HS-20
20"	Green Space - No Traffic	HS-20	HS-20	HS-20	HS-20
24"	Green Space - No Traffic	HS-20	HS-20	HS-20	HS-20
36"	Green Space - No Traffic	HS-20	HS-20	HS-20	HS-20
48"	-	HS-20	HS-20	HS-20	HS-20
60"	-	HS-20	HS-20	HS-20	HS-20
72"	-	HS-20	HS-20	-	HS-20
84"	-	-	HS-20	-	HS-20
120"	-	-	HS-20	-	HS-20
160"	-	-	-	-	HS-20
Maximum 200"	-	-	-	-	HS-20

HS-20 designation based on AASHTO LRFD Bridge Design Specification for Single Lane Traffic

* Cover depth is measured from the top of the module to the finished grade or top of pavement.

** The UD module requires STONE backfill (not soils) on the sides at this depth.

PRODUCT SPECIFICATION

800.448.3636

acfenvironmental.com



Dimensions & Capacity

Module (Segments)	Width (inch)	Length (inch)	Height (in/ft)	Volume (cf)	Capacity (cf)	Weight* (lbs)
Mini	15.75	28.15	9.45"/0.79'	2.42	2.30	10.1/10.9
Single(1)	15.75	28.15	17.32"/1.44'	4.44	4.22	15.7/17.3
Single + Mini(1.5)	15.75	28.15	25.98"/2.17'	6.67	6.33	23.6/25.9
Double (2)	15.75	28.15	33.86"/2.82'	8.69	8.25	29.1/32.3
Double + Mini(2.5)	15.75	28.15	42.52"/3.54'	10.91	10.36	37.0/41.0
Triple (3)	15.75	28.15	50.39"/4.20'	12.93	12.28	42.5/47.4
Triple + Mini(3.5)	15.75	28.15	59.06"/4.92'	15.15	14.39	50.4/56.0
Quad(4)	15.75	28.15	66.93"/5.58'	17.17	16.31	55.9/62.4
Quad + Mini(4.5)	15.75	28.15	75.59"/6.30'	19.39	18.42	63.8/71.0
Pent(5)	15.75	28.15	83.46"/6.96'	21.41	20.34	69.3/77.4

*Weights shown are for LD/HD modules.

Dimensions & Capacity

Module (Segments)	Width (inch)	Length (inch)	Height (in/ft)	Volume (cf)	Capacity (cf)	Weight (lbs)
Single (1)	15.75	28.15	9.45"/0.79'	2.42	2.30	10.95
Double (2)	15.75	28.15	18.12"/1.51'	4.64	4.41	19.58
Triple (3)	15.75	28.15	26.79"/2.23'	6.86	6.52	28.21
Quad (4)	15.75	28.15	35.46"/2.96'	9.08	8.63	36.84
Pent (5)	15.75	28.15	44.13"/3.68'	11.30	10.74	45.47
Hex (6)	15.75	28.15	52.80"/4.40'	13.52	12.84	54.10
Septa (7)	15.75	28.15	61.47"/5.12'	15.74	14.95	62.73
Octo (8)	15.75	28.15	70.14"/5.85'	17.96	17.06	71.36
Nono (9)	15.75	28.15	78.81"/6.57'	20.18	19.17	79.99
Decka (10)	15.75	28.15	87.48"/7.29'	22.40	21.28	88.62



Dimensions & Capacity

Module (Segments)	Width (inch)	Length (inch)	Height (in/ft)	Volume (cf)	Capacity (cf)	Weight (lbs)
Single (1)	23.62	23.62	14.17"/1.18'	4.57	4.35	21.2
Double (2)	23.62	23.62	27.17"/2.26'	8.77	8.33	39.0
Triple (3)	23.62	23.62	40.16"/3.35'	12.97	12.32	56.8
Quad (4)	23.62	23.62	53.15"/4.43'	17.16	16.30	74.6
Pent (5)	23.62	23.62	66.14"/5.5'	21.35	20.29	92.4

Dimensions & Capacity

Module (Segments)	Width (inch)	Length (inch)	Height (inch)	Volume (cf)	Capacity (cf)	Weight (lbs)
Single (1)	19.68	23.62	1.97	0.53	0.48	4
Double (2)	19.68	23.62	3.94	1.06	0.95	8
Triple (3)	19.68	23.62	5.91	1.59	1.43	12
Quad (4)	19.68	23.62	7.87	2.12	1.91	16
Pent (5)	19.68	23.62	9.84	2.65	2.38	20

Note: XD modules may be stacked up to 10' tall (60 layers).

Specifications



Item	Description	LD	HD	SD	UD	XD
Void Area	Volume available for water storage	95%	95%	95%	95%	90%
Surface Area Void	% of exterior available for infiltration	90%	90%	90%	90%	90%
Compressive Strength	ASTM D2412 / ASTM F2418	30.0 psi	33.4	42.9 psi	134.2 psi	240.2 psi
Unit Weight	Weight of plastic/cubic foot of tank	3.29 lbs/cf	3.62 lbs/cf	3.96 lbs/cf	4.33 lbs/cf	7.55 lbs/cf
Rib Thickness	Thickness of load-bearing members	0.18 inches	0.18 inches	0.18 inches	-	-
Service Temperature	Safe temperature range for use	-14 - 167° F	-14 - 167° F	-14 - 167° F	-14 - 167° F	-14 - 167° F
Recycled Content	Use of recycle polypropylene	100%	100%	100%	100%	100%
Minimum Cover	Cover required for HS-20 loading	Not Traffic Rated	20"	18"	12"-14"	6"
Minimum Cover	Cover required for HS-25 loading	Not Traffic Rated	24"	18"	15"-17"	6"
Maximum Cover	Maximum allowable cover depth	3.0'	6.99'	9.99'	5.0'	16.7'

3 2018

FOCALPOINT

HIGH PERFORMANCE MODULAR BIOFILTRATION SYSTEM

NYS DEC DESIGN WORKSHEET/CHECKLIST

The New York State Department of Environmental Conservation (NYS DEC) has approved the FocalPoint (High Performance Modular Biofiltration System) as a proprietary stormwater management practice for use on New Development, Redevelopment and Retrofit Projects.

1. FocalPoint Bed Area (min 174 square feet per acre of impervious area (e.g. 0.2 acres = 35 sf))

- Tributary Impervious area = 0.44 ac. (A)
- Tributary Pervious area = 0.018 ac. (B)
- Min FocalPoint bed area req'd = $(((A) \times 1.0) + ((B) \times 0.4)) \times 174$ = 77.8 sf.
- FocalPoint Bed Area provided * = 100 sf.
- Dimensions of Proposed FocalPoint = 2 ft x 50 ft

* see criteria 2. to determine if minimum size is appropriate.

2. A Type II 24hr rainfall event that generates the WQ volume shall be modelled to demonstrate the entire storm volume is treated prior to activation of the overflow (typically set at 6-12" above the mulch) (Note: a 1.2 to 1.3" rainfall event usually generates 1 inch of runoff) contact ACF for a sample HydroCAD node.

- Water Quality Volume Goal (WQv) = 2332 cubic feet
- Type II 24hr Rainfall Depth to generate WQv = 1.73 inches
- Temporary storage depth provided = 6" inches (typ 6" to 12")
- Temporary storage volume provided at above depth = 336.5 cubic feet.
- Peak ponding depth from Type II 24hr storm event = 5.5" inches

3. Size Harco Domed Overflow Riser

- Domed Overflow Riser:
 - Rim Elev of Overflow Riser: = _____ (typ 6-12" above mulch surface)
 - Overflow Riser Diameter = _____ (12, 15, 18, 24 or 30" dia)
 - 6" invert in Elev from FocalPoint = _____ (typ 3 ft below mulch surface)
 - _____" invert out Elev = _____
- Or other (spillway/weir etc) ☐

4. RRv, Channel Protection and Flood Control/Peak flow attenuation of major storms

- The treated flow and bypass flow can be routed to a detention system either an open pond, or a subsurface system such as an expanded R-Tank system (contact ACF for additional information on designing expanded R-Tank systems)

5. The Design shall be reviewed by the manufacturer's representative prior to submission and installation will be overseen by the manufacturer's representative.

- The Design has been reviewed by ACF Environmental ☐
- Engineer will coordinate installation inspection with ACF ☐

11.) Stormwater Management Construction Checklists

APPENDIX H

STATE POLLUTANT DISCHARGE ELIMINATION SYSTEM FOR CONSTRUCTION ACTIVITIES CONSTRUCTION SITE LOG BOOK

Table of Contents

- I. Pre-Construction Meeting Documents
 - a. Preamble to Site Assessment and Inspections
 - b. Operator's Certification
 - c. Qualified Professional's Credentials & Certification
 - d. Pre-Construction Site Assessment Checklist
- II. Construction Duration Inspections
 - a. Directions
 - b. Modification to the SWPPP
- III. Monthly Summary Reports
- IV. Monitoring, Reporting, and Three-Month Status Reports
 - a. Operator's Compliance Response Form

Properly completing forms such as those contained in Appendix H meet the inspection requirement of NYS-DEC SPDES GP for Construction Activities. Completed forms shall be kept on site at all times and made available to authorities upon request.

I. PRE-CONSTRUCTION MEETING DOCUMENTS

Project Name _____

Permit No. _____ Date of Authorization _____

Name of Operator _____

Prime Contractor _____

a. Preamble to Site Assessment and Inspections

The Following Information To Be Read By All Person's Involved in The Construction of Stormwater Related Activities:

The Operator agrees to have a qualified professional¹ conduct an assessment of the site prior to the commencement of construction² and certify in this inspection report that the appropriate erosion and sediment controls described in the SWPPP have been adequately installed or implemented to ensure overall preparedness of the site for the commencement of construction.

Prior to the commencement of construction, the Operator shall certify in this site logbook that the SWPPP has been prepared in accordance with the State's standards and meets all Federal, State and local erosion and sediment control requirements.

When construction starts, site inspections shall be conducted by the qualified professional at least every 7 calendar days and within 24 hours of the end of a storm event of 0.5 inches or greater (Construction Duration Inspections). The Operator shall maintain a record of all inspection reports in this site logbook. The site logbook shall be maintained on site and be made available to the permitting authorities upon request. The Operator shall post at the site, in a publicly accessible location, a summary of the site inspection activities on a monthly basis (Monthly Summary Report).

The operator shall also prepare a written summary of compliance with this general permit at a minimum frequency of every three months (Operator's Compliance Response Form), while coverage exists. The summary should address the status of achieving each component of the SWPPP.

Prior to filing the Notice of Termination or the end of permit term, the Operator shall have a qualified professional perform a final site inspection. The qualified professional shall certify that the site has undergone final stabilization³ using either vegetative or structural stabilization methods and that all temporary erosion and sediment controls (such as silt fencing) not needed for long-term erosion control have been removed. In addition, the Operator must identify and certify that all permanent structures described in the SWPPP have been constructed and provide the owner(s) with an operation and maintenance plan that ensures the structure(s) continuously functions as designed.

1 "Qualified Professional means a person knowledgeable in the principles and practice of erosion and sediment controls, such as a Certified Professional in Erosion and Sediment Control (CPESC), soil scientist, licensed engineer or someone working under the direction and supervision of a licensed engineer (person must have experience in the principles and practices of erosion and sediment control).

2 "Commencement of construction" means the initial removal of vegetation and disturbance of soils associated with clearing, grading or excavating activities or other construction activities.

3 "Final stabilization" means that all soil-disturbing activities at the site have been completed and a uniform, perennial vegetative cover with a density of eighty (80) percent has been established or equivalent stabilization measures (such as the use of mulches or geotextiles) have been employed on all unpaved areas and areas not covered by permanent structures.

b. Operators Certification

"I certify under penalty of law that this document and all attachments were prepared under my direction or supervision in accordance with a system designed to assure that qualified personnel properly gathered and evaluated the information submitted. Based on my inquiry of the person or persons who manage the system, or those persons directly responsible for gathering the information, the information submitted is, to the best of my knowledge and belief, true, accurate, and complete. Further, I hereby certify that the SWPPP meets all Federal, State, and local erosion and sediment control requirements. I am aware that false statements made herein are punishable as a class A misdemeanor pursuant to Section 210.45 of the Penal Law.

Name (please print): _____

Title _____ **Date:** _____

Address: _____

Phone: _____ **Email:** _____

Signature: _____

c. Qualified Professional's Credentials & Certification

"I hereby certify that I meet the criteria set forth in the General Permit to conduct site inspections for this project and that the appropriate erosion and sediment controls described in the SWPPP and as described in the following Pre-construction Site Assessment Checklist have been adequately installed or implemented, ensuring the overall preparedness of this site for the commencement of construction."

Name (please print): _____

Title _____ **Date:** _____

Address: _____

Phone: _____ **Email:** _____

Signature: _____

d. Pre-construction Site Assessment Checklist

(NOTE: Provide comments below as necessary)

1. Notice of Intent, SWPPP, and Contractors Certification:

Yes No NA

- ☐ ☐ ☐ Has a Notice of Intent been filed with the NYS Department of Conservation?
- ☐ ☐ ☐ Is the SWPPP on-site? Where? _____
- ☐ ☐ ☐ Is the Plan current? What is the latest revision date? _____
- ☐ ☐ ☐ Is a copy of the NOI (with brief description) onsite? Where? _____
- ☐ ☐ ☐ Have all contractors involved with stormwater related activities signed a contractor's certification?

2. Resource Protection

Yes No NA

- ☐ ☐ ☐ Are construction limits clearly flagged or fenced?
- ☐ ☐ ☐ Important trees and associated rooting zones, on-site septic system absorption fields, existing vegetated areas suitable for filter strips, especially in perimeter areas, have been flagged for protection.
- ☐ ☐ ☐ Creek crossings installed prior to land-disturbing activity, including clearing and blasting.

3. Surface Water Protection

Yes No NA

- ☐ ☐ ☐ Clean stormwater runoff has been diverted from areas to be disturbed.
- ☐ ☐ ☐ Bodies of water located either on site or in the vicinity of the site have been identified and protected.
- ☐ ☐ ☐ Appropriate practices to protect on-site or downstream surface water are installed.
- ☐ ☐ ☐ Are clearing and grading operations divided into areas <5 acres?

4. Stabilized Construction Entrance

Yes No NA

- ☐ ☐ ☐ A temporary construction entrance to capture mud and debris from construction vehicles before they enter the public highway has been installed.
- ☐ ☐ ☐ Other access areas (entrances, construction routes, equipment parking areas) are stabilized immediately as work takes place with gravel or other cover.
- ☐ ☐ ☐ Sediment tracked onto public streets is removed or cleaned on a regular basis.

5. Perimeter Sediment Controls

Yes No NA

- ☐ ☐ ☐ Silt fence material and installation comply with the standard drawing and specifications.
- ☐ ☐ ☐ Silt fences are installed at appropriate spacing intervals
- ☐ ☐ ☐ Sediment/detention basin was installed as first land disturbing activity.
- ☐ ☐ ☐ Sediment traps and barriers are installed.

6. Pollution Prevention for Waste and Hazardous Materials

Yes No NA

- ☐ ☐ ☐ The Operator or designated representative has been assigned to implement the spill prevention avoidance and response plan.
- ☐ ☐ ☐ The plan is contained in the SWPPP on page _____
- ☐ ☐ ☐ Appropriate materials to control spills are onsite. Where? _____

II. CONSTRUCTION DURATION INSPECTIONS

a. Directions:

Inspection Forms will be filled out during the entire construction phase of the project.

Required Elements:

- (1) On a site map, indicate the extent of all disturbed site areas and drainage pathways. Indicate site areas that are expected to undergo initial disturbance or significant site work within the next 14-day period;
- (2) Indicate on a site map all areas of the site that have undergone temporary or permanent stabilization;
- (3) Indicate all disturbed site areas that have not undergone active site work during the previous 14-day period;
- (4) Inspect all sediment control practices and record the approximate degree of sediment accumulation as a percentage of sediment storage volume (for example, 10 percent, 20 percent, 50 percent);
- (5) Inspect all erosion and sediment control practices and record all maintenance requirements such as verifying the integrity of barrier or diversion systems (earthen berms or silt fencing) and containment systems (sediment basins and sediment traps). Identify any evidence of rill or gully erosion occurring on slopes and any loss of stabilizing vegetation or seeding/mulching. Document any excessive deposition of sediment or ponding water along barrier or diversion systems. Record the depth of sediment within containment structures, any erosion near outlet and overflow structures, and verify the ability of rock filters around perforated riser pipes to pass water; and
- (6) Immediately report to the Operator any deficiencies that are identified with the implementation of the SWPPP.

SITE PLAN/SKETCH

Inspector (print name)

Date of Inspection

Qualified Professional (print name)

Qualified Professional Signature

The above signed acknowledges that, to the best of his/her knowledge, all information provided on the forms is accurate and complete.

Maintaining Water Quality**Yes No NA**

- ☐ ☐ ☐ Is there an increase in turbidity causing a substantial visible contrast to natural conditions?
- ☐ ☐ ☐ Is there residue from oil and floating substances, visible oil film, or globules or grease?
- ☐ ☐ ☐ All disturbance is within the limits of the approved plans.
- ☐ ☐ ☐ Have receiving lake/bay, stream, and/or wetland been impacted by silt from project?

Housekeeping

1. General Site Conditions

Yes No NA

- ☐ ☐ ☐ Is construction site litter and debris appropriately managed?
- ☐ ☐ ☐ Are facilities and equipment necessary for implementation of erosion and sediment control in working order and/or properly maintained?
- ☐ ☐ ☐ Is construction impacting the adjacent property?
- ☐ ☐ ☐ Is dust adequately controlled?

2. Temporary Stream Crossing

Yes No NA

- ☐ ☐ ☐ Maximum diameter pipes necessary to span creek without dredging are installed.
- ☐ ☐ ☐ Installed non-woven geotextile fabric beneath approaches.
- ☐ ☐ ☐ Is fill composed of aggregate (no earth or soil)?
- ☐ ☐ ☐ Rock on approaches is clean enough to remove mud from vehicles & prevent sediment from entering stream during high flow.

Runoff Control Practices

1. Excavation Dewatering

Yes No NA

- ☐ ☐ ☐ Upstream and downstream berms (sandbags, inflatable dams, etc.) are installed per plan.
- ☐ ☐ ☐ Clean water from upstream pool is being pumped to the downstream pool.
- ☐ ☐ ☐ Sediment laden water from work area is being discharged to a silt-trapping device.
- ☐ ☐ ☐ Constructed upstream berm with one-foot minimum freeboard.

2. Level Spreader

Yes No NA

- ☐ ☐ ☐ Installed per plan.
- ☐ ☐ ☐ Constructed on undisturbed soil, not on fill, receiving only clear, non-sediment laden flow.
- ☐ ☐ ☐ Flow sheets out of level spreader without erosion on downstream edge.

3. Interceptor Dikes and Swales

Yes No NA

- ☐ ☐ ☐ Installed per plan with minimum side slopes 2H:1V or flatter.
- ☐ ☐ ☐ Stabilized by geotextile fabric, seed, or mulch with no erosion occurring.
- ☐ ☐ ☐ Sediment-laden runoff directed to sediment trapping structure

CONSTRUCTION DURATION INSPECTIONS
Runoff Control Practices (continued)

Page 3 of _____

4. Stone Check Dam

Yes No NA

- ☐ ☐ ☐ Is channel stable? (flow is not eroding soil underneath or around the structure).
☐ ☐ ☐ Check is in good condition (rocks in place and no permanent pools behind the structure).
☐ ☐ ☐ Has accumulated sediment been removed?.

5. Rock Outlet Protection

Yes No NA

- ☐ ☐ ☐ Installed per plan.
☐ ☐ ☐ Installed concurrently with pipe installation.

Soil Stabilization

1. Topsoil and Spoil Stockpiles

Yes No NA

- ☐ ☐ ☐ Stockpiles are stabilized with vegetation and/or mulch.
☐ ☐ ☐ Sediment control is installed at the toe of the slope.

2. Revegetation

Yes No NA

- ☐ ☐ ☐ Temporary seedings and mulch have been applied to idle areas.
☐ ☐ ☐ 4 inches minimum of topsoil has been applied under permanent seedings

Sediment Control Practices

1. Stabilized Construction Entrance

Yes No NA

- ☐ ☐ ☐ Stone is clean enough to effectively remove mud from vehicles.
☐ ☐ ☐ Installed per standards and specifications?
☐ ☐ ☐ Does all traffic use the stabilized entrance to enter and leave site?
☐ ☐ ☐ Is adequate drainage provided to prevent ponding at entrance?

2. Silt Fence

Yes No NA

- ☐ ☐ ☐ Installed on Contour, 10 feet from toe of slope (not across conveyance channels).
☐ ☐ ☐ Joints constructed by wrapping the two ends together for continuous support.
☐ ☐ ☐ Fabric buried 6 inches minimum.
☐ ☐ ☐ Posts are stable, fabric is tight and without rips or frayed areas.
Sediment accumulation is ____% of design capacity.

Sediment Control Practices (continued)**3. Storm Drain Inlet Protection (Use for Stone & Block; Filter Fabric; Curb; or, Excavated practices)****Yes No NA**

- ☐ ☐ ☐ Installed concrete blocks lengthwise so open ends face outward, not upward.
- ☐ ☐ ☐ Placed wire screen between No. 3 crushed stone and concrete blocks.
- ☐ ☐ ☐ Drainage area is 1 acre or less.
- ☐ ☐ ☐ Excavated area is 900 cubic feet.
- ☐ ☐ ☐ Excavated side slopes should be 2:1.
- ☐ ☐ ☐ 2" x 4" frame is constructed and structurally sound.
- ☐ ☐ ☐ Posts 3-foot maximum spacing between posts.
- ☐ ☐ ☐ Fabric is embedded 1 to 1.5 feet below ground and secured to frame/posts with staples at max 8-inch spacing.
- ☐ ☐ ☐ Posts are stable, fabric is tight and without rips or frayed areas.
- Sediment accumulation ____% of design capacity.

4. Temporary Sediment Trap**Yes No NA**

- ☐ ☐ ☐ Outlet structure is constructed per the approved plan or drawing.
- ☐ ☐ ☐ Geotextile fabric has been placed beneath rock fill.
- Sediment accumulation is ____% of design capacity.

5. Temporary Sediment Basin**Yes No NA**

- ☐ ☐ ☐ Basin and outlet structure constructed per the approved plan.
- ☐ ☐ ☐ Basin side slopes are stabilized with seed/mulch.
- ☐ ☐ ☐ Drainage structure flushed and basin surface restored upon removal of sediment basin facility.
- Sediment accumulation is ____% of design capacity.

Note: Not all erosion and sediment control practices are included in this listing. Add additional pages to this list as required by site specific design.

Construction inspection checklists for post-development stormwater management practices can be found in Appendix F of the New York Stormwater Management Design Manual.

b. Modifications to the SWPPP (To be completed as described below)

1. There is a significant change in design, construction, operation, or maintenance which may have a significant effect on the potential for the discharge of pollutants to the waters of the United States and which has not otherwise been addressed in the SWPPP; or
2. The SWPPP proves to be ineffective in:
 - a. Eliminating or significantly minimizing pollutants from sources identified in the SWPPP and as required by this permit; or
 - b. Achieving the general objectives of controlling pollutants in stormwater discharges from permitted construction activity; and
3. Additionally, the SWPPP shall be amended to identify any new contractor or subcontractor that will implement any measure of the SWPPP.

This image shows a single sheet of white paper with horizontal ruling lines. The lines are evenly spaced and run across the width of the page. There are no margins, text, or other markings on the paper.

III. Monthly Summary of Site Inspection Activities

Name of Permitted Facility:	Today's Date:	Reporting Month:
Location:	Permit Identification #:	
Name and Telephone Number of Site Inspector:		

Date of Inspection	Regular / Rainfall based Inspection	Name of Inspector	Items of Concern

Owner/Operator Certification:

"I certify under penalty of law that this document and all attachments were prepared under my direction or supervision in accordance with a system designed to assure that qualified personnel properly gathered and evaluated the information submitted. Based on my inquiry of the person or persons who manage the system, or those persons directly responsible for gathering the information, the information submitted is, to the best of my knowledge and belief, true, accurate, and complete. I am aware that false statements made herein are punishable as a class A misdemeanor pursuant to Section 210.45 of the Penal Law."

Signature of Permittee or Duly Authorized Representative

Name of Permittee or Duly Authorized Representative Date

Duly authorized representatives must have written authorization, submitted to DEC, to sign any permit documents.

Monthly Summary of Site Inspection Activities

Location:

Permit Reference; Part III.D.3.b (page 15):

“The operator shall post at the site, in a publicly-accessible location, a summary of the site inspection activities on a monthly basis.”

[illegible]

Owner/Operator Certification:

"I certify under penalty of law that this document and all attachments were prepared under my direction or supervision in accordance with a system designed to assure that qualified personnel properly gathered and evaluated the information submitted. Based on my inquiry of the person or persons who manage the system, or those persons directly responsible for gathering the information, the information submitted is, to the best of my knowledge and belief, true, accurate, and complete. I am aware that false statements made herein are punishable as a class A misdemeanor pursuant to Section 210.45 of the Penal Law."

Signature of Permittee or Duly Authorized Representative

Name of Permittee or Duly Authorized Representative

Date _____

Duly authorized representatives of the Permittee (Owner/Operator) must have written authorization, submitted to DEC, to sign any permit documents.

Inspection and Maintenance Checklist Catch Basins, Manholes, and Inlets

Date: _____

Type of Inspection: Storm ☐ Weekly ☐ Monthly ☐ Annual ☐

Site: _____ Inspector(s): _____

Description or location of Project: _____

Defect	Conditions when Maintenance is Needed	Maintenance (1 or 2)*	Comments
General			
Trash and Debris	Trash and debris which are located immediately in front of the catch basin opening or is blocking inletting capacity of the basin by more than 10%.		
	Trash or debris (in the basin) that exceeds 60 percent of the sump depth as measured from the bottom of basin to invert of the lowest pipe into or out of the basin, but in no case less than a minimum of six inches clearance from the debris surface to the invert of the lowest pipe.		
	Trash or debris in any inlet or outlet pipe blocking more then 1/3 of its height.		
	Dead animals or vegetation that could generate odors that could cause complaints or dangerous gases (e.g., methane).		
Sediment	Sediment (in the basin) that exceeds 60 percent of the sump depth as measured from the bottom of basin to invert of the lowest pipe into or out of the basin, but in no case less than a minimum of 6 inches clearance from the sediment surface to the invert of the lowest pipe.		
Structure Damage to Frame and/or Top Slab	Top slab has holes larger than 2 square inches or cracks wider then ¼ inch.		
	Frame not sitting flush on top slab, i.e., separation of more than ¾ inch of the frame from the top slab. Frame not securely attached.		

*Maintenance: Enter 1 if maintenance is needed. Enter 2 if maintenance was preformed same day.

Defect	Conditions when Maintenance is Needed	Maintenance (1 or 2)*	Comments
Fractures or Cracks in Basin Walls/Bottom	Maintenance person judges that structure is unsound.		
	Grout fillet has separated or cracked wider than ½ inch and longer than 1 foot at the joint of any inlet/outlet pipe or any evidence of soil particles entering catch basin through cracks.		
Settlement/Misalignment	If failure of basin has created a safety, function, or design problem.		
Vegetation	Vegetation growing across and blocking more than 10% of the basin opening.		
	Vegetation growing in inlet/outlet pipe joints that is more than 6 inches tall and less than 6 inches apart.		
Contamination and Pollution	Any evidence of oil, gasoline, contaminants or other pollutants.		
Catch Basin Cover			
Cover Not in Place	Cover is missing or only partially in place. Any open catch basin requires maintenance.		
Locking Mechanism Not Working	Mechanism cannot be opened by one maintenance person with proper tools. Bolts into frame have less than ½ inch of thread.		
Cover Difficult to Remove	One maintenance person cannot remove lid after applying normal lifting pressure. (Intent is keep cover from sealing off access to maintenance).		
Ladder			
Ladder Rungs Unsafe	Ladder is unsafe due to missing rungs, not securely attached to basin wall, misalignment, rust, cracks, or sharp edges.		
Metal Grates (If Applicable)			
Grate opening Unsafe	Grate with opening wider than 7/8 inch.		
Trash and Debris	Trash and debris that is blocking more than 20% of grate surface inletting capacity.		
Damaged or Missing	Grate missing or broken member(s) of the grate.		

*Maintenance: Enter 1 if maintenance is needed. Enter 2 if maintenance was preformed same day.

Inspection and Maintenance Checklist Conveyance Systems (Pipes & Ditches)

Date: _____

Type of Inspection: Storm ☐ Weekly ☐ Monthly ☐ Annual ☐

Site: _____ Inspector(s): _____

Defect	Conditions When Maintenance Is Needed	Maintenance (1 or 2)*	Comments
Pipes			
Sediment & Debris	Accumulated Sediment that exceeds 20% of the diameter of the pipe.		
Vegetation	Vegetation that reduces free movement of water through pipes		
Damaged Pipe	Protective coating is damaged; rust is causing more than 50% deterioration to any part of pipe.		
	Any dent that decreases the cross section area of pipe by more than 20% or puncture that impacts performance.		
Open Ditches			
Trash and Debris	Trash and debris > 5 cf/1000 sf (one standard size garbage can)		
	Visual evidence of dumping		
Sediment	Accumulated sediment that exceeds 20% of the design depth.		
Vegetation	Vegetation that reduces free movement of water through ditches.		
Erosion Damage to Slopes and Channel Bottom	Eroded damage over 2 inches deep where cause of damage is still present or where there is potential for continued erosion.		
Rock Lining Out of Place or Missing (If Applicable)	Maintenance person can see native soil beneath the rock lining.		

*Maintenance: Enter 1 if maintenance is needed. Enter 2 if maintenance was preformed same day.

Hudson Engineering Flood Storage Analysis



HUDSON
ENGINEERING
&
CONSULTING, P.C.

January 14, 2019

Robin Kramer, Chair
Board of Appeals
Village of Mamaroneck
Village Hall (Third Floor)
169 Mt. Pleasant Avenue
Mamaroneck, New York 10543

Re: Site Plan Review
416 Waverly Avenue (560 Fenimore Avenue)
Village of Mamaroneck

Dear Ms. Kramer,

Regarding the above referenced application, the grading on the subject site was performed to replicate the existing storage capacity of flood waters on the site. As verified by the charts below, in the proposed condition the storage of flood water on site increases slightly. Therefore, this development does not negatively impact the elevation of flood water in the area, and in fact it results in a theoretical decrease in the flood elevation.

Volumetric Analysis - Existing Conditions			
Elevation	Surface Area	Incremental Storage (Cubic Feet)	Cumulative Storage (Cubic Feet)
21	0	0	0
22	388	194	194
23	2,961	1,675	1,869
24	16,517	9,739	11,608
25	21,073	18,795	30,403
26	27,420	24,247	54,649

Volumetric Analysis - Proposed Conditions			
Elevation	Surface Area	Incremental Storage (Cubic Feet)	Cumulative Storage (Cubic Feet)
21	0	0	0
22	704	352	352
23	5,344	3,024	3,376
24	15,142	10,243	13,619
25	22,826	18,984	32,603
26	26,110	24,468	57,071



HUDSON
ENGINEERING
&
CONSULTING, P.C.

Robin Kramer, Chair
Board of Appeals
Village of Mamaroneck
January 14, 2019
Page 2 of 2

Refer to the attached volumetric analysis (Sheet C-5).

If you should have any additional questions or comments, please do not hesitate to contact our office at (914) 909-0420.

Sincerely,


Michael F. Stein, P.E.
President



**Stormwater Control
Facility Maintenance
Agreement**

STORMWATER CONTROL FACILITY MAINTENANCE AGREEMENT

Whereas, the Municipality of Village of Mamaroneck ("Municipality") and the _____ ("facility owner") want to enter into an agreement to provide for the long term maintenance and continuation of stormwater control measures approved by the Municipality for the below named project, and

Whereas, the Municipality and the facility owner desire that the stormwater control measures be built in accordance with the approved project plans and thereafter be maintained, cleaned, repaired, replaced and continued in perpetuity in order to ensure optimum performance of the components. Therefore, the Municipality and the facility owner agree as follows:

1. This agreement binds the Municipality and the facility owner, its successors and assigns, to the maintenance provisions depicted in the approved project plans which are attached as Schedule A of this agreement.
2. The facility owner shall maintain, clean, repair, replace and continue the stormwater control measures as necessary to ensure optimum performance of the measures to design specifications. The stormwater control measures shall include, but shall not be limited to, the following: drop inlets, pipes, culverts, soil absorption devices and hydrodynamic separator devices.
3. The facility owner shall be responsible for all expenses related to the maintenance of the stormwater control measures and shall establish a means for the collection and distribution of expenses among parties for any commonly owned facilities.
4. The facility owner shall provide for the periodic inspection of the stormwater control measures, not less than once in every five year period, to determine the condition and integrity of the measures. Such inspection shall be performed by a Professional Engineer licensed by the State of New York. The inspecting engineer shall prepare and submit to the Municipality within 30 days of the inspection, a written report of the findings including recommendations for those actions necessary for the continuation of the stormwater control measures.
5. The facility owner shall not authorize, undertake or permit alteration, abandonment, modification or discontinuation of the stormwater control measures except in accordance with written approval of the Municipality.

6. The facility owner shall undertake necessary repairs and replacement of the stormwater control measures at the direction of the Municipality or in accordance with the recommendations of the inspecting engineer.

7. This agreement shall be recorded in the Office of the County Clerk, County of _____ together with the deed for the common property and shall be included in the offering plan and/or prospectus approved pursuant to _____.

8. If ever the Municipality determines that the facility owner has failed to construct or maintain the stormwater control measures in accordance with the project plan or has failed to undertake corrective action specified by the Municipality or by the inspecting engineer, the Municipality is authorized to undertake such steps as reasonably necessary for the preservation, continuation or maintenance of the stormwater control measures and to affix the expenses thereof as a lien against the property.

9. This agreement is effective _____.

Provident Engineering Traffic & Parking Study